



Lighting

BALANCING STYLE AND SUSTAINABILITY

Trend. A buzzword for marketing the latest line of products, or indeed, a summary of upcoming styles based on in-depth research and industry analysis? It would seem that when it comes to lighting design, views are split.

Previous trend patterns have included the much anticipated return of brass, as well as the unstoppable surge of the LED takeover. “There is definitely a lot more individuality when it comes to design, we are starting to see a much more eclectic mix in terms of both styles and fittings,” comments Robert Chelsom, Managing Director, Chelsom. “There’s much more of a natural feel to product materials, think wood, stones and lacquered metals and textured fabrics such as linens, weaves and naturals.”

Further to this, hotels are increasingly shunning over-styled design, and the return of the industrial look symbolises this. Oversized fixtures, exposed engineering and mechanical joints convey a laudable relaxed attitude, while still being the result of very conscious, design-led decisions. “I predict there is still a lot more of this to come,” says Chelsom. “Higher levels of design are required across the board,” he continues. This means striking a balance, blending forward-thinking styling with the latest LED technological developments. Sally Storey, Design Director, Lighting Design International (LDI) explains: “I would expect to see more and better lamps to be used in decorative fixtures over the coming year, and more innovative, decorative chandeliers that will use LEDs as an integral element of the fixture.”

Pushing technological boundaries further, Leon Jakimic, President of Lasvit, comments: “A trend I see is dynamic lighting and kinetic installations.” Offering the ability to be controlled remotely, these developments can be seen with the brand’s kinetic installations such as Supernova. Movement can be managed manually, correspond to guest interaction or be paired with music, creating a relevant and mesmerising lighting display.

However, there still seems to be some debate over where emphasis is placed, with factors such as cost, end-user satisfaction and sustainability being favoured by varying parties. According to Chelsom, design remains the key driver in terms of change, followed by function and the s-word. “Sustainability is undoubtedly a growing consideration, but it is definitely not at the top of most people’s

list versus design and price,” states Chelsom. Does this mean that suppliers are set to continue producing purely design-led collections, or make the change to prioritise sustainability? According to LDI, the solution is balance: “The lighting designer’s role is more important than ever to understand and interpret the best solutions. Knowing how to manipulate the new vocabulary or colour palette of LEDs, knowing which to select for output, this is all an art and a science.”

The rise of LEDs has been accelerated by the rapid development of technology over the past years, increasing the versatility of their use. “Five years ago there were complaints, about peoples skin looking pale under the chandeliers and requesting halogens,” states Jakimic, explaining their rapid growth. Another incentive for their use is the lower energy costs for operators and owners. “All of our schemes are now 100% energy efficient which not only reduces energy bills, but also helps with maintenance as LEDs, if correctly installed, have a much longer lamp life than the old halogen fittings,” says Storey.

Colin Watson, Managing Director of BCFA also comments: “Lighting quality is the priority in all hotel design. The size of LED bulbs is another benefit; typically small, these

are useful for designers seeking subtlety in schemes.” It is evidently crucial that new developments must work with existing properties and standards of luxury. “We are seeing a less prescriptive, fixed form of luxury in hotel lighting design. As both mid-tier and luxury brands have stepped up their offerings, there is an increased pressure to create a new and alternative luxury.”

Another contributing factor to lighting design is the evolving function of guestrooms within hotels. Guests now seek to utilise spaces for a number of activities such as working, eating and relaxing. “The ability to create bespoke environments for each visitor is becoming a requirement, rather than luxury,” explains Watson.

Chelsom concludes: “It’s not enough to come up with great designs that look the part, suppliers need to demonstrate their technical capabilities and flexibility when it comes to both manufacturing and design.”

“In the end, we all want to imitate the sun”

Leon Jakimic - Lasvit



TOM DIXON
Melt

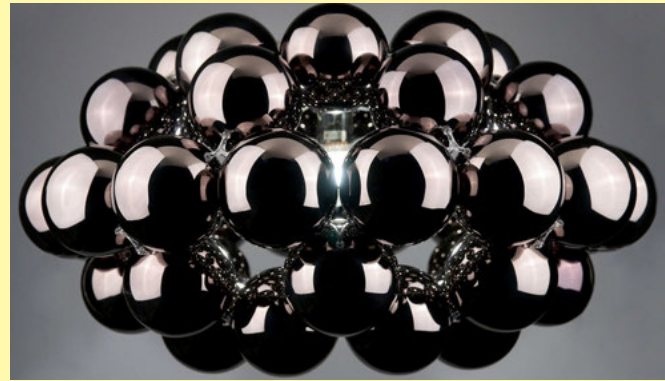
Available in copper, chrome and gold, Melt is a beautifully distorted lighting globe from Tom Dixon. The design creates a mesmerising melting hot blown glass effect, translucent when on and mirrored when off. The light emits an unusual, attractive, mildly hallucinogenic glow, creating atmosphere and a talking point. Melt can hang as a standalone statement pendant, or be combined with multiple pieces to create a striking centrepiece.

www.tomdixon.net

INNERMOST
Beads

Designed by Winnie Lui, Beads is now available in a new colour of Gunmetal. Part of Innermost's SS14 collection, the design brings together the best detailing and finishing from Lui's jewellery craft, and blends it with the engineering and technology of modern lighting design. The latest colour creates a luxurious, reflective effect for the eye-catching piece.

www.innermost.net



ZUMTOBEL
Linetik

Design elements of the new Linetik have been carefully crafted to focus on the core essentials and deliver an elegant appearance, free from needless details. Despite its distinctive look, the freestanding luminaire can be integrated into any environment. Growing out of a desire to use only what is needed; Linetik's unique shape allows users to control where the lighting covers. Despite the compact dimensions, the optical system uses minimal energy to deliver precise lighting distribution without glare.

www.zumtobel.com

“Another current trend is the retro look, with designs reminiscent of the 1950s and 1960s” – Chelsom

LASVIT
Fungo

The Campana Brothers' latest design for Lasvit, Fungo Chandelier, takes inspiration from the fascinating shape of a mushroom growing on wood. A visit to Lasvit's glassworks revealed an old glassblowing wood mould, ravaged with mushrooms, or fungi, thus inspiring the brothers accidentally. The design combines Lasvit's glassmaking techniques with natural materials, resulting in a striking contrast between the formal rigidity of the chandelier's wooden structure and the blown-glass that appears “naturally” from the wood.

www.lasvit.com



— CHELSOM —



Custom Rods by Chelsom – Edition 24



chelsom.co.uk

LIGHTS OF VIENNA

Custom Lighting

Developed alongside GA Design for a bespoke project, Lights of Vienna's custom-made timber partition combines decorative glass elements lit by LED strings with wood. Up to four-metres high, the fittings offer an alternative to standard illumination designs.

www.lightsofvienna.com



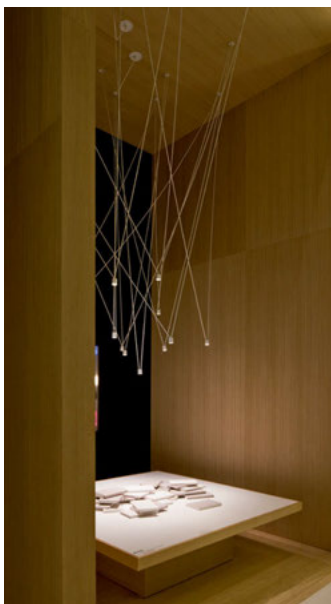
TOM RAFFIELD

Giant Flock Chandelier

Inspired by the acrobatic mass of a flock of starlings in the twilight sky, the Giant Flock Chandelier brings nature indoors. Made from over 120 steam-bent shapes of ash, oak, and walnut wood that are delicately suspended from an ash ceiling plate. The light is supplied with three tungsten bulbs, omitting a warm glow. The intricate design can be customised in a variety of sizes and specifications.

www.tomraffield.com

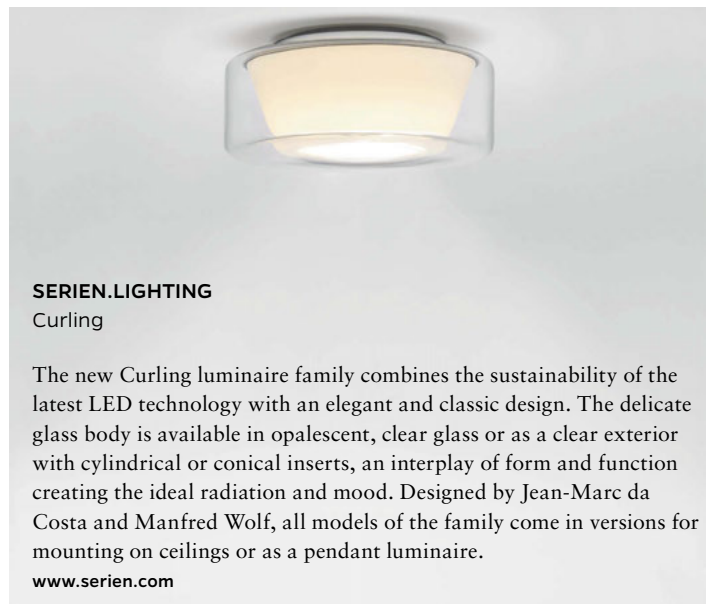
“There is an increased pressure to create a new and alternative luxury” – BCFA



VIBIA
Match

Sculptural light compositions comprise Match, which aims to convert ceilings into works of art through chaotic harmony. Designed by Jordi Vilardell and Meritxell Vidal, the lighting system was conceived as a new concept allowing multiple unique and customised lighting solutions that can be adapted accordingly. The possibilities are infinite, as simple linear configurations of light can be facilitated in order to highlight areas of interest, defining a minimalist aesthetic.

www.vibia.com



SERIEN.LIGHTING
Curling

The new Curling luminaire family combines the sustainability of the latest LED technology with an elegant and classic design. The delicate glass body is available in opalescent, clear glass or as a clear exterior with cylindrical or conical inserts, an interplay of form and function creating the ideal radiation and mood. Designed by Jean-Marc da Costa and Manfred Wolf, all models of the family come in versions for mounting on ceilings or as a pendant luminaire.

www.serien.com



DESIGNHEURE

Nenuphar

Playing with sculpture, acoustics and light simultaneously, the Kristian Gavaille-designed Nenuphar offers a fascinating addition to both ceilings and walls. The modular nature allows 360-degree rotation and, alongside the choice of personalised colours, allows creativity. It has an indirect, modern LED light source that is scattering in backlight. Nenuphar comes as a result of dual problems such as large wall spacings and low ceilings requiring a decorative and architectural response.

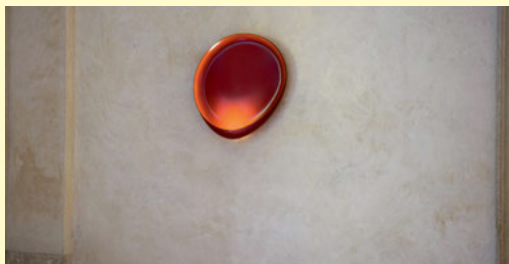
www.designheure.com

PRECISION LIGHTING

Evo

Evo R11 is a fully adjustable spotlight for the MR11 lamp, using a knuckle joint for a discreet aesthetic. There are three interchangeable snoots that click into place with a bayonet mechanism, each of them compatible with a wide range of lenses and louvres. The specially designed heatsink and airflow systems reduce the lamp and surface temperature, while preventing any light spill. Standard finishes are brushed aluminum, rubbed bronze, white and black, with custom finishes available on request.

www.precisionlighting.co.uk



FOSCARINI

Lake

Designed by Paolo Lucidi and Luca Pevere, Lake is inspired by a mirror of water reflecting vibrant hues of the sky. The duo have created a coloured spot light, with a powerful LED source hidden in the slim side, allowing the lamp to retain its ultra-minimal silhouette. The result is a light box effect, where the edges collect the light and amplify the colours. The designers chose warm colours, allowing adaptation to all environments.

www.foscarini.com

ASTRO

Ginestra

Complete with an industrial feel but distinct identity, Ginestra is a new addition to Astro's collection of metal pendants. The design features a retro reference, yet the execution is modern and individual allowing design flexibility. This is continued with the varying size and design options, with two size choices and standard lamps, LEDs or decorative filament lamps available.

www.astrolighting.co.uk



FLOS
OK

Industrial designer Konstantin Grcic has paid homage to Achille Castiglioni's Parentesi lamp with the design of OK for Flos. Redesigning the original light bulb as an ultra-flat LED surface using edge-lighting technology, OK embraces the latest lighting advances to create a simplistic pendant. The parenthesis-shaped tube of the original lamp maintains a vertical sliding function, but has now become a small rectangular box with soft-touch switch.

www.flos.com



PS INTERIORS

Aspen

The new Aspen lighting collection is a modern colourful range, creating a fresh and vibrant atmosphere. The direct and diffused light accompanies the flexibility of the colour combinations, allowing the customisation of the lights to match varying colour schemes. The dual shades are available in multiple combinations of snow, grey, lemon, mango, clear, turquoise and aqua. Aspen is also available as a floor standing lamp.

www.ps-interiors.co.uk

“Knowing what not to light can be as important as knowing what to light” – LDI



CHELSOM
Saucer Floor Lamp

The retro-look Saucer Floor Lamp by Chelsom is an elegant fitting with contemporary appeal. Available as part of a wider collection of ceiling, desk and wall lighting, the Saucer Floor Lamp features a heavy stepped base, supporting a curved sweeping arm and 1960s-inspired canopy with soft, white light emitted through an opal acrylic diffuser. As well as satin black with polished chrome, the lamp is available in various finishes

www.chelsom.co.uk

BELL XPRESS

Lady7

Designed with a wispy-thin silhouette, Lady7 provides a clear, linear light source. A cordless joint design is joined by ultra efficient LEDs, generating little heat and allowing the lamp to operate within safe temperatures. All components are housed inside a simple, right-angled shape, with an arm that swivels and telescopes. Meanwhile, the built-in touch strip controls brightness.

www.bellxpress.dk

