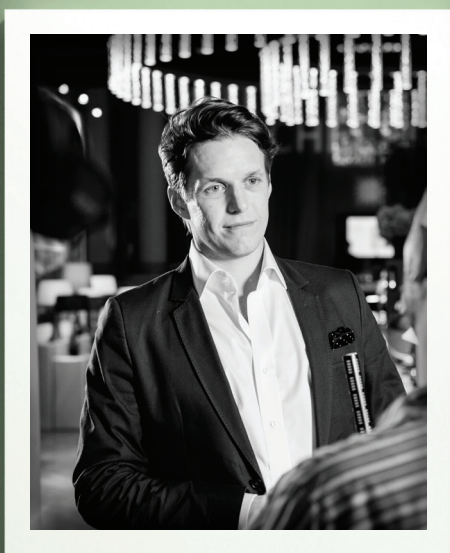




MINUTES WITH...

# Will Chelsom



What is your favourite light source, and why?

I am a huge fan of anything retro at the moment. We are currently seeing a huge influx of 'squirrel cage' lamps, and they are often the main feature to any interior scheme.

As much as I appreciate LED for its versatility and efficiency, I will always appreciate lighting primarily because of the way it looks.

Building facades lit with colour – for or against – and why?

Generally speaking, I am for this. We supplied most of the interior lighting at Mondrian London with Tom Dixon, and they have put some very cool blue exterior lighting on the facade of the Sea Containers House building, which looks amazing. However, there is a fine line between 'Christmas Tree naff' and sophisticated, subtle facade lighting, so you have to get it right!

Who is your favourite designer of anything that's not lighting?

At the moment, I would say the interior designer, Martin Brudnizki. We are lucky enough to work with his studio on various projects, and I love all of the interior schemes they come up with. I particularly love the Holborn Dining Room at Rosewood London.

Which lighting project would you like to have worked on?

I really admire Firmedale Hotels, and all of Kit Kemp's interiors. Their recent project, Ham Yard Hotel in Soho is absolutely stunning, and I would have loved to have been involved in it in some way.

After the huge changes LED has brought to the industry, what do you think will be the next big advance?

I think LED lighting will continue to evolve, and be used in more applications as the technology improves and becomes more affordable.

However, I think there will be more focus on the aesthetics of light sources.

Already we are seeing the popularity of things like squirrel cage lamps and cold cathode in decorative applications, and I think that idea needs to now be blended with energy efficient light sources more.

Companies like Plumen, which manufactures the decorative low energy

fluorescent lamps, are doing great things and I think we will see more of that.

Do you see a time when all lighting is sustainable? If so, how can we achieve it?

I find this very hard to imagine right now, because there are certain applications where sustainable lighting is not fit for purpose, and prices are often too high.

However, with the constant progress being made in lighting technology – in particular with LED – I am sure this will soon change, and it will become second nature for people to use the most efficient light sources available, for both commercial and domestic situations.

What trends do you forecast in domestic lighting?

I hope we will see more original designs, better quality, and people thinking outside the box more.

Tom Dixon is the perfect example of someone that keeps reinventing his lighting designs, and that is why he is the best in the business.

Design is the most important thing for Chelsom to stand out in the hotel interior market, and it should be the same in domestic lighting. New technology will help enhance original design in the future, and should allow people to do lots of different and cool things.

Why do you think lighting is bucking the general trend and showing such strong growth?

I think more and more people understand that you can truly transform an interior with good lighting.

Not only the top interior designers, but also domestic consumers now have access to some very interesting lighting products, and it means lighting has become very fashionable, and a real interiors talking point.

Chandelier or candle?

Is the candle scented? That might sway my answer...

Is there one declining light source that you'll miss above all others? If so, which is it, and why?

Like many others out there, I would hate to see the death of the filament lamp; I can only imagine that will happen one day soon. It will be like getting rid of the wheel.

## CONTACT

Chelsom Lighting  
[www.chelsom.co.uk](http://www.chelsom.co.uk)