



FEATURES

BRUSHED BRASS ACCENTS CONTRAST WITH SATIN BLACK METALWORK AND TAPERED SHADE IS SUSPENDED GIVING GOOD DOWNLIGHT. ALSO HAS A DIRECTIONAL SWITCHED LED READING LIGHT WITH INTEGRAL DRIVER IN THE BACKPLATE. FABRIC SHADE IS BESPOKE WITH OTHER FABRICS AVAILABLE.

MATERIAL

STEEL

FINISH

SATIN BLACK WITH BRUSHED BRASS

RECOMMENDED LAMP

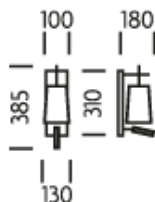
1 X E27 7W LED 2700K PLUS 1 X LED 1W 2700K

CERTIFICATIONS

CE UK CA IP20

studio^c

DIMENSIONS



FULL TECHNICAL SPECIFICATION

MATERIAL	STEEL	SWITCH TYPE	PUSH
FINISH	SATIN BLACK WITH BRUSHED BRASS	DIMMABLE AS STANDARD?	BY REQUEST ONLY
LAMPHOLDER TYPE	E27 AND INTEGRAL LED	INSULATION RATING	CLASS I
RECOMMENDED LAMP	1 X E27 7W LED 2700K PLUS 1 X LED 1W 2700K	IP RATING	IP20
COLOUR TEMPERATURE	2700K	WIDTH WITH SHADE	130
MAX WATTAGE (RETROFIT)	30W	HEIGHT WITH SHADE	385
WATTAGE (W) - INTEGRAL LED	1W	PROJECTION	180MM
CE	YES	BACKPLATE DIMENSIONS	310 X 100MM
UKCA	YES	NET PRODUCT WEIGHT	1.75KG
UL	FOR UL PLEASE ENQUIRE.	OVERALL HEIGHT AS SHOWN	385MM
DRIVER LOCATION	INTEGRAL	OVERALL WIDTH AS SHOWN	130MM

FOR MORE INFORMATION ABOUT THIS PRODUCT:

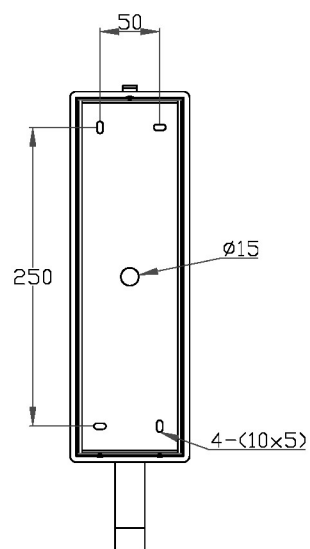
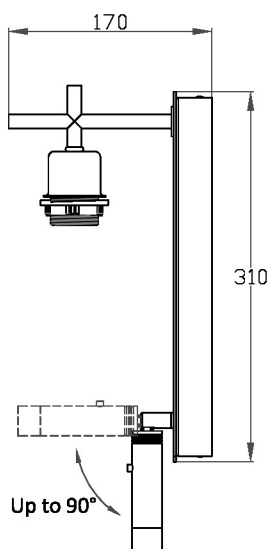
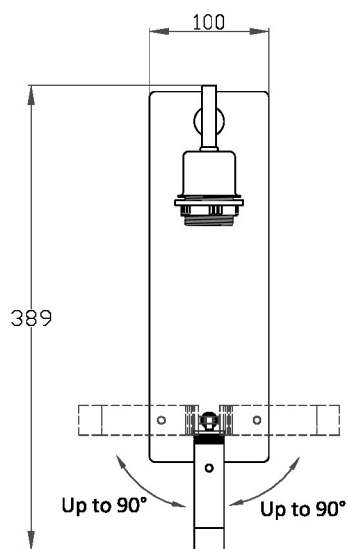
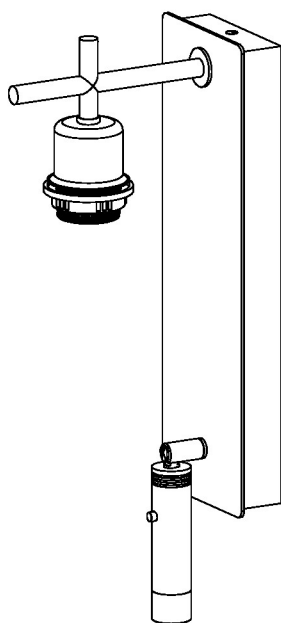
Email: sales@chelsom.co.uk | Call: +44 (0)1253 831400

Chelsom Limited, Heritage House, Clifton Road, Blackpool, Lancashire FY4 4QA, United Kingdom

wordpress-700079-2614039.cloudwaysapps.com

— CHELSOM —

EST. 1947



DW/6/W1/LED

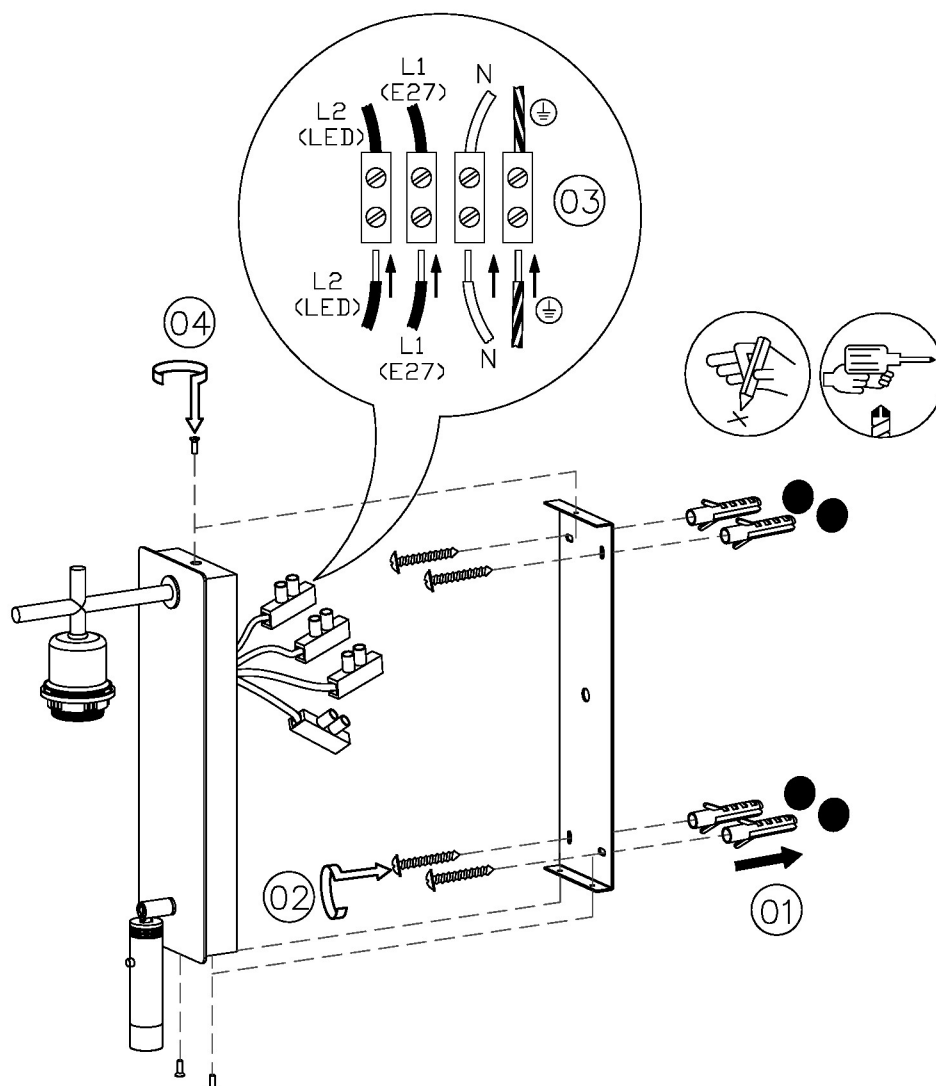
Revision A

www.chelsom.co.uk

— CHELSOM —

EST. 1947

FOLLOW THE NUMBERED ASSEMBLY SEQUENCE

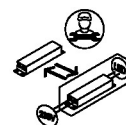


SLR Information

This product contains a light source
of Energy Efficiency Class E
Regulation 2021 No. 1095



Non-replaceable
light source



Control gear
replaceable by
qualified person

www.chelsom.co.uk