



FEATURES

A SIMPLE YET BEAUTIFULLY DESIGNED WALL LIGHT FEATURING A FULLY ADJUSTABLE CYLINDER HEAD WITH A SLOTTED DETAIL IN THE TOP AND A KNURLED HANDLE FOR DIRECTING THE LIGHT. THERE IS AN OPAL ACRYLIC DIFFUSER IN THE BOTTOM OF THE HEAD WHICH AVOIDS DIRECT GLARE AND THE RIM OF THE DIFFUSER GIVES AN AMBIENT HALO OF INDIRECT LIGHT. THERE IS A COLOUR MATCHED METAL PUSH SWITCH IN THE BACKPLATE.

MATERIAL

STEEL AND ACRYLIC

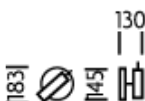
FINISH

BRUSHED NICKEL (BN)

CERTIFICATIONS

CE UK CA IP20

DIMENSIONS



FULL TECHNICAL SPECIFICATION

MATERIAL	STEEL AND ACRYLIC	SWITCH TYPE	PUSH
FINISH	BRUSHED NICKEL (BN)	DIMMABLE AS STANDARD?	BY REQUEST ONLY
LAMPHOLDER TYPE	INTEGRAL LED	INSULATION RATING	CLASS I
INTEGRAL LIGHT SOURCE	LED 6W 2700K	IP RATING	IP20
COLOUR TEMPERATURE	2700K	PROJECTION	130MM
WATTAGE (W) - INTEGRAL LED	6W	BACKPLATE DIMENSIONS	145MM DIAMETER
CE	YES	NET PRODUCT WEIGHT	0.85KG
UKCA	YES	OVERALL HEIGHT AS SHOWN	183MM
UL	FOR UL PLEASE ENQUIRE.	OVERALL WIDTH AS SHOWN	145MM
DRIVER LOCATION	INTEGRAL		

FOR MORE INFORMATION ABOUT THIS PRODUCT:

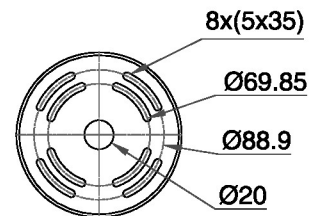
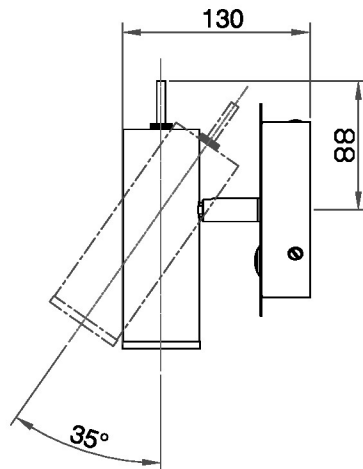
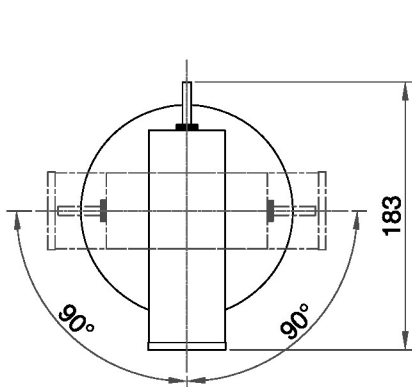
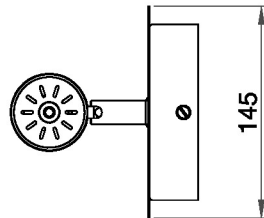
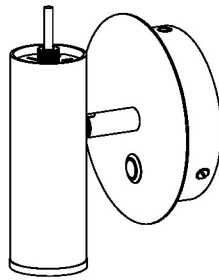
Email: sales@chelsom.co.uk | Call: +44 (0)1253 831400

Chelsom Limited, Heritage House, Clifton Road, Blackpool, Lancashire FY4 4QA, United Kingdom

wordpress-700079-2614039.cloudwaysapps.com

— CHELSOM —

EST. 1947



TT/200/W1

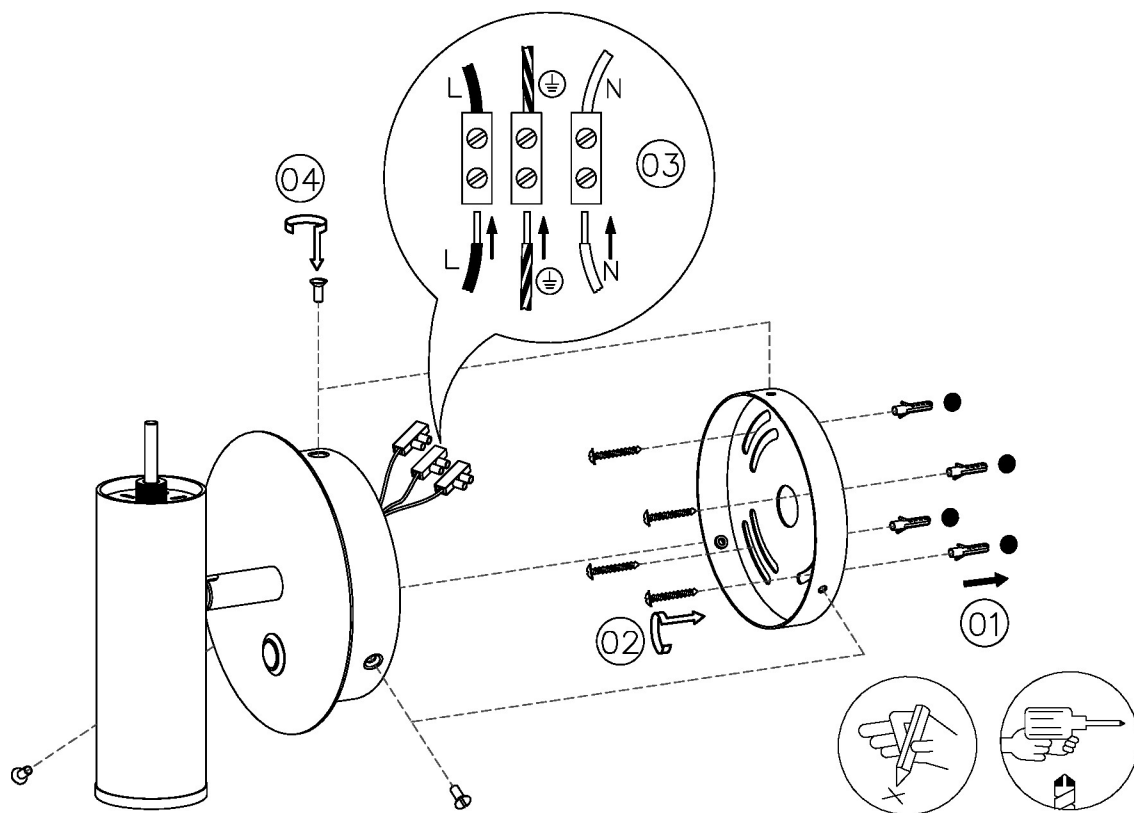
www.chelsom.co.uk

Revision A

— CHELSOM —

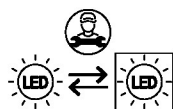
EST. 1947

FOLLOW THE NUMBERED ASSEMBLY SEQUENCE

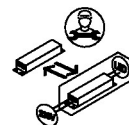


SLR Information

This product contains a light source
of Energy Efficiency Class E
Regulation 2021 No. 1095



LED light source
replaceable by
qualified person



Control gear
replaceable by
qualified person

www.chelsom.co.uk