



FEATURES

ROBUST DETAILED HINGE ALLOWS ARM TO SWIVEL. HAS COLOUR MATCHED METAL PUSH SWITCH. FULL RANGE OF OPTIONAL SHADES AVAILABLE.

MATERIAL

STEEL

FINISH

POLISHED CHROME (C)

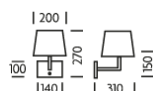
RECOMMENDED LAMP

1 X E27 7W LED 2700K

CERTIFICATIONS

CE UKCA UL \pm IP20

DIMENSIONS



FULL TECHNICAL SPECIFICATION

| | | | |
|------------------------|----------------------|------------------------------------|-------------|
| MATERIAL | STEEL | INSULATION RATING | CLASS I |
| FINISH | POLISHED CHROME (C) | IP RATING | IP20 |
| LAMPHOLDER TYPE | E27 | PROJECTION | 310MM |
| RECOMMENDED LAMP | 1 X E27 7W LED 2700K | BACKPLATE DIMENSIONS | 100 X 140MM |
| MAX WATTAGE (RETROFIT) | 30W | NET PRODUCT WEIGHT | 1.6KG |
| CE | YES | OVERALL HEIGHT WITH SHADE AS SHOWN | 270MM |
| UKCA | YES | OVERALL HEIGHT WITHOUT SHADE | 150MM |
| UL | YES | OVERALL WIDTH WITH SHADE AS SHOWN | 200MM |
| SWITCH TYPE | PUSH | OVERALL WIDTH WITHOUT SHADE | 140MM |
| DIMMABLE AS STANDARD? | BY REQUEST ONLY | | |

FOR MORE INFORMATION ABOUT THIS PRODUCT:

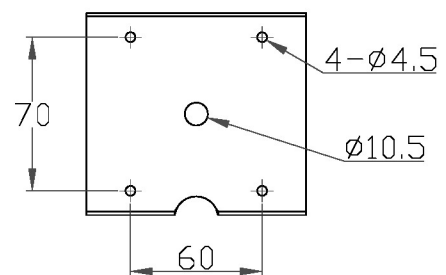
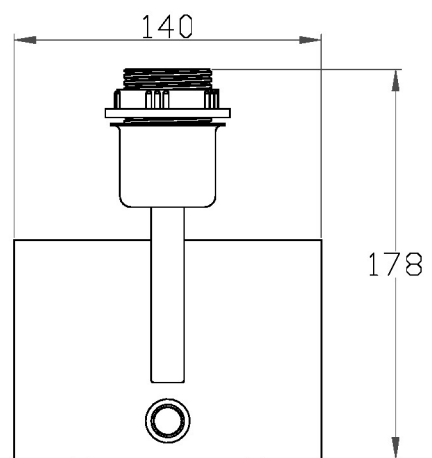
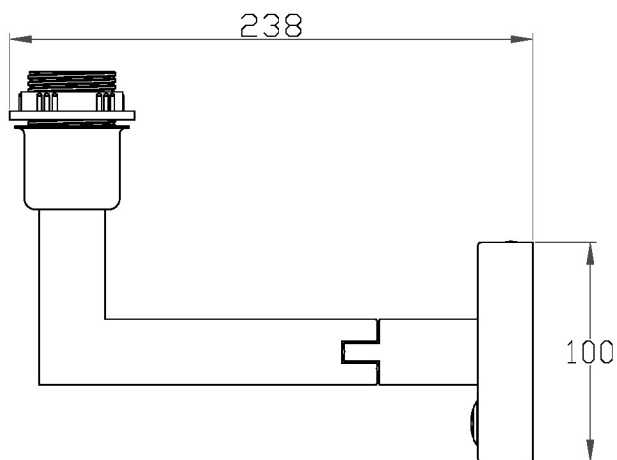
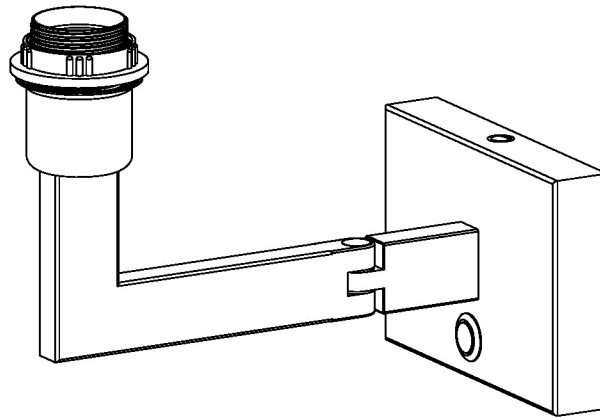
Email: sales@chelsom.co.uk | Call: +44 (0)1253 831400

Chelsom Limited, Heritage House, Clifton Road, Blackpool, Lancashire FY4 4QA, United Kingdom

wordpress-700079-2614039.cloudwaysapps.com

— CHELSOM —

EST. 1947



— CHELSOM —

EST. 1947

FOLLOW THE NUMBERED ASSEMBLY SEQUENCE

