



FEATURES

ROBUST DETAILED HINGE ALLOWS ARM TO SWIVEL. CYLINDRICAL HEAD WITH VENTILATION HOLE ROTATES TO GIVE DIRECTIONAL READING LIGHT. COLOUR MATCHED PUSH SWITCH IN BACKPLATE.

MATERIAL

STEEL

FINISH

BLACK BRONZE (BB)

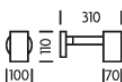
RECOMMENDED LAMP

1 X GU10 6W LED 2700K

CERTIFICATIONS

CE UKCA UL \pm IP20

DIMENSIONS



FULL TECHNICAL SPECIFICATION

MATERIAL	STEEL	DIMMABLE AS STANDARD?	BY REQUEST ONLY
FINISH	BLACK BRONZE (BB)	INSULATION RATING	CLASS I
LAMPHOLDER TYPE	GU10	IP RATING	IP20
RECOMMENDED LAMP	1 X GU10 6W LED 2700K	PROJECTION	310MM
MAX WATTAGE (RETROFIT)	10W	BACKPLATE DIMENSIONS	100MM DIAMETER
CE	YES	NET PRODUCT WEIGHT	0.9KG
UKCA	YES	OVERALL HEIGHT AS SHOWN	110MM
UL	YES	OVERALL WIDTH AS SHOWN	100MM
SWITCH TYPE	PUSH		

FOR MORE INFORMATION ABOUT THIS PRODUCT:

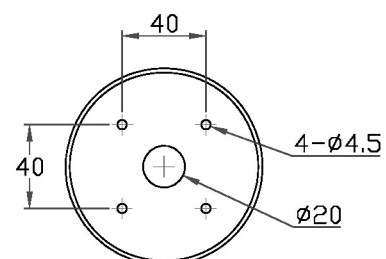
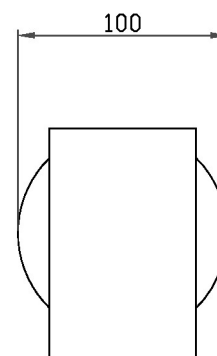
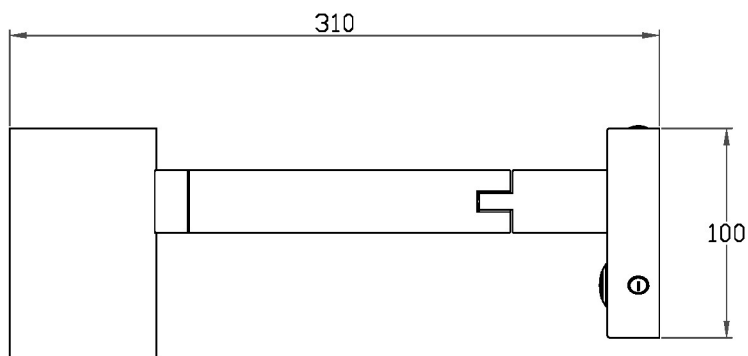
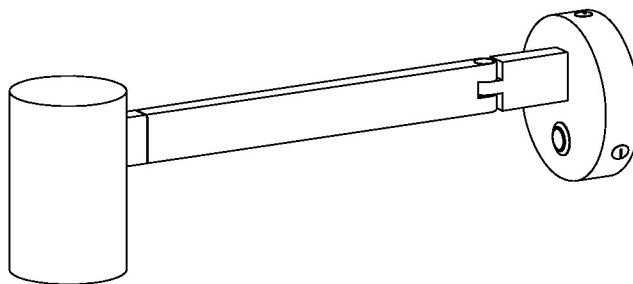
Email: sales@chelsom.co.uk | Call: +44 (0)1253 831400

Chelsom Limited, Heritage House, Clifton Road, Blackpool, Lancashire FY4 4QA, United Kingdom

wordpress-700079-2614039.cloudwaysapps.com

— CHELSOM —

EST. 1947



SW/40/W1

Revision A

— CHELSOM —

EST. 1947

FOLLOW THE NUMBERED ASSEMBLY SEQUENCE

