



FEATURES

IP44 BATHROOM WALL LIGHT WITH STEPPED END DETAILS AND OPAL GLASS DIFFUSER. ALSO SUITABLE FOR HORIZONTAL MOUNTING.

MATERIAL

STEEL WITH GLASS

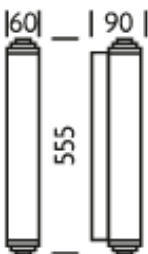
FINISH

POLISHED CHROME WITH OPAL GLASS

CERTIFICATIONS

CE UK CA IP44

DIMENSIONS



FULL TECHNICAL SPECIFICATION

MATERIAL	STEEL WITH GLASS	INSULATION RATING	CLASS I
FINISH	POLISHED CHROME WITH OPAL GLASS	IP RATING	IP44
LAMPHOLDER TYPE	INTEGRAL LED	BATHROOM ZONE	ZONE 2
INTEGRAL LIGHT SOURCE	LED 8W 3000K	WIDTH	60
COLOUR TEMPERATURE	3000K	HEIGHT	555
WATTAGE (W) - INTEGRAL LED	8W	PROJECTION	90MM
CE	YES	BACKPLATE DIMENSIONS	533 X 41MM
UKCA	YES	NET PRODUCT WEIGHT	0.85KG
UL	FOR UL PLEASE ENQUIRE.	OVERALL HEIGHT AS SHOWN	555MM
DRIVER LOCATION	INTEGRAL	OVERALL WIDTH AS SHOWN	60MM
DIMMABLE AS STANDARD?	BY REQUEST ONLY		

FOR MORE INFORMATION ABOUT THIS PRODUCT:

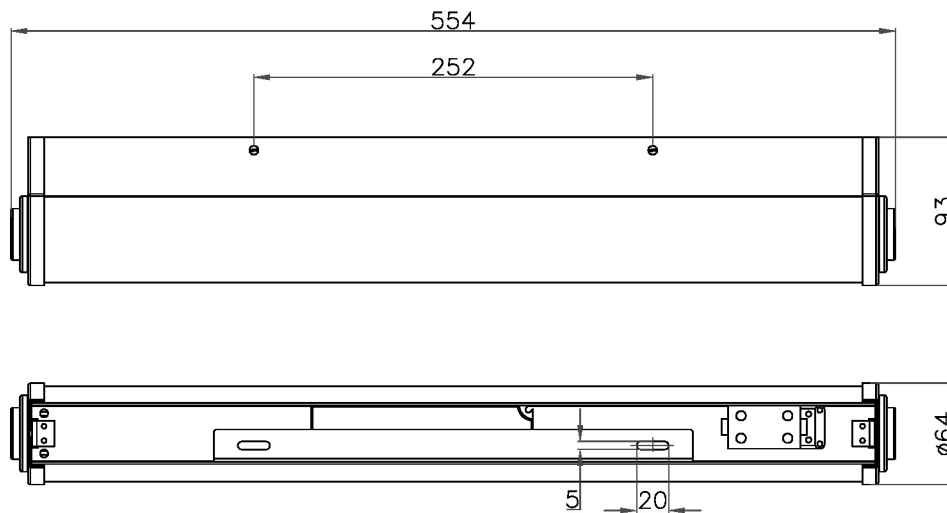
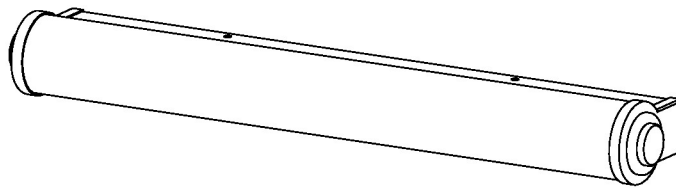
Email: sales@chelsom.co.uk | Call: +44 (0)1253 831400

Chelsom Limited, Heritage House, Clifton Road, Blackpool, Lancashire FY4 4QA, United Kingdom

wordpress-700079-2614039.cloudwaysapps.com

— CHELSOM —

EST. 1947



BW/112/LED

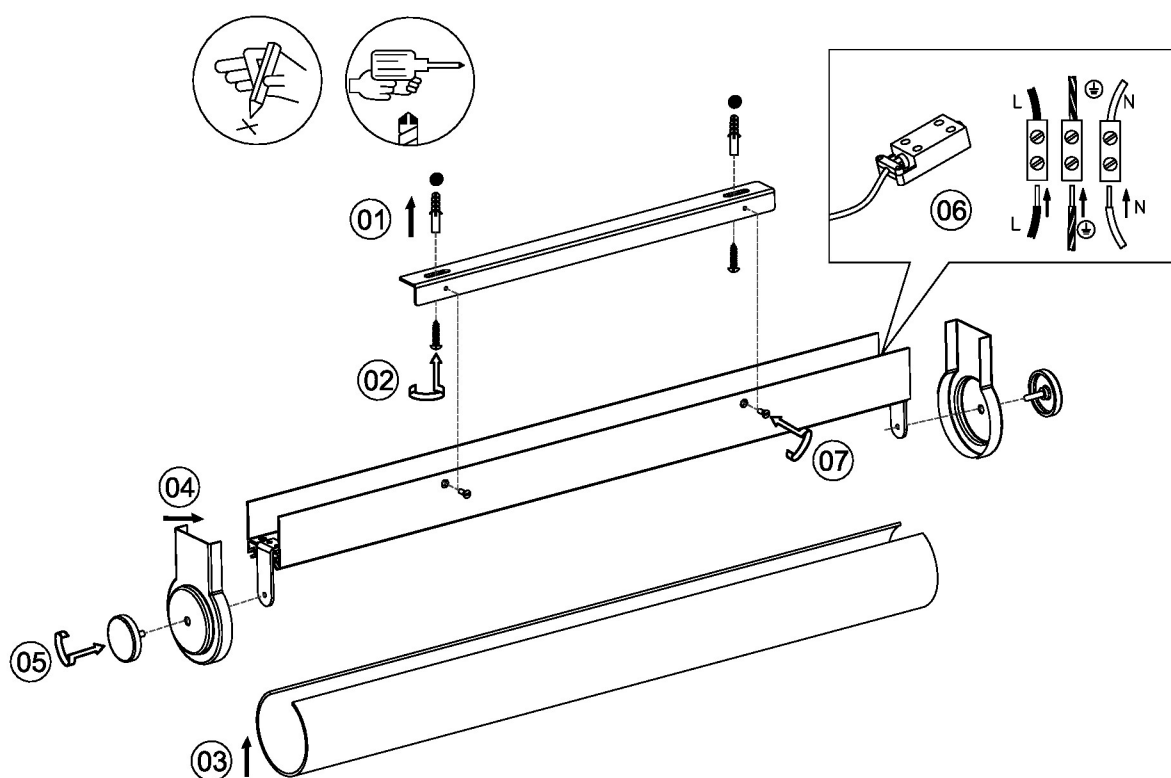
www.chelsom.co.uk

Revision A

— CHELSOM —

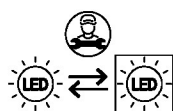
EST. 1947

FOLLOW THE NUMBERED ASSEMBLY SEQUENCE

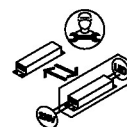


SLR Information

This product contains a light source of Energy Efficiency Class E Regulation 2021 No. 1095



LED light source replaceable by qualified person



Control gear replaceable by qualified person

www.chelsom.co.uk