



#### FEATURES

CONICAL TURNING JOINS BACKPLATE TO ARM. FULL RANGE OF OPTIONAL SHADES AVAILABLE.

#### MATERIAL

STEEL

#### FINISH

POLISHED CHROME (C)

#### RECOMMENDED LAMP

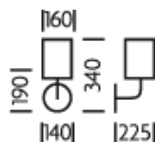
1 X E27 7W LED 2700K

#### CERTIFICATIONS

CE UK UL ± IP20

**studio****c**

#### DIMENSIONS



## FULL TECHNICAL SPECIFICATION

MATERIAL	STEEL	IP RATING	IP20
FINISH	POLISHED CHROME (C)	WIDTH WITH SHADE	140
LAMPHOLDER TYPE	E27	HEIGHT	170
RECOMMENDED LAMP	1 X E27 7W LED 2700K	HEIGHT WITH SHADE	340
MAX WATTAGE (RETROFIT)	30W	PROJECTION	225MM
CE	YES	BACKPLATE DIMENSIONS	140MM DIAMETER
UKCA	YES	NET PRODUCT WEIGHT	1.3KG
UL	YES	OVERALL HEIGHT WITH SHADE AS SHOWN	340MM
DIMMABLE AS STANDARD?	YES	OVERALL HEIGHT WITHOUT SHADE	190MM
DIMMING TYPE	PHASE	OVERALL WIDTH WITH SHADE AS SHOWN	160MM
INSULATION RATING	CLASS I	OVERALL WIDTH WITHOUT SHADE	140MM

### FOR MORE INFORMATION ABOUT THIS PRODUCT:

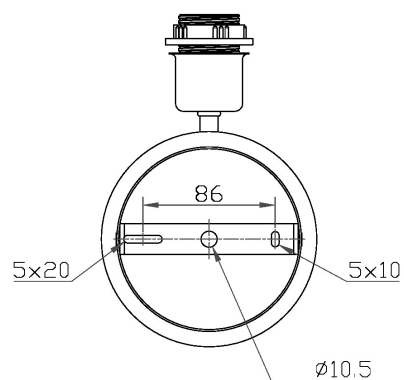
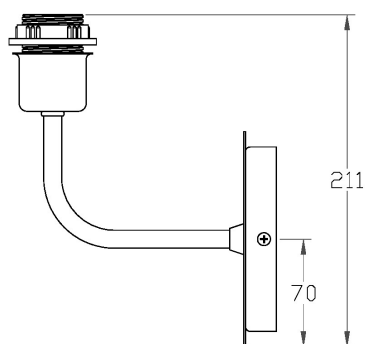
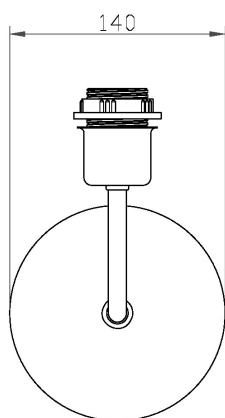
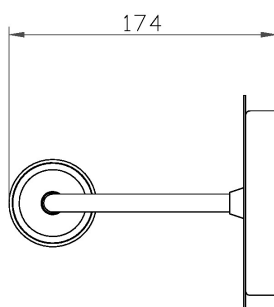
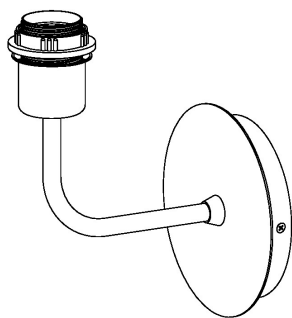
Email: [sales@chelsom.co.uk](mailto:sales@chelsom.co.uk) | Call: +44 (0)1253 831400

Chelsom Limited, Heritage House, Clifton Road, Blackpool, Lancashire FY4 4QA, United Kingdom

[wordpress-700079-2614039.cloudwaysapps.com](https://wordpress-700079-2614039.cloudwaysapps.com)

# — CHELSOM —

EST. 1947



**AV/60/W1**

**Revision A**

[www.chelsom.co.uk](http://www.chelsom.co.uk)

# — CHELSOM —

EST. 1947

FOLLOW THE NUMBERED ASSEMBLY SEQUENCE

