



#### FEATURES

A WARM WHITE LED HEADBOARD READING LIGHT IS HOUSED WITHIN A CYLINDRICAL HEAD THAT SWIVELS 90° LEFT, RIGHT OR FORWARD AND 'DOCKS' INTO A SEMI RECESSED BACKPLATE, WHICH CAN BE VERTICALLY OR HORIZONTALLY MOUNTED.

#### MATERIAL

STEEL AND ALUMINIUM

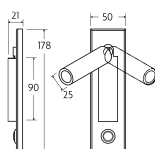
#### FINISH

BLACK BRONZE (BB)

#### CERTIFICATIONS

CE UK CA UL IP20

#### DIMENSIONS



## FULL TECHNICAL SPECIFICATION

|                                   |                     |                                |                 |
|-----------------------------------|---------------------|--------------------------------|-----------------|
| <b>MATERIAL</b>                   | STEEL AND ALUMINIUM | <b>DIMMABLE AS STANDARD?</b>   | BY REQUEST ONLY |
| <b>FINISH</b>                     | BLACK BRONZE (BB)   | <b>INSULATION RATING</b>       | CLASS I         |
| <b>LAMPHOLDER TYPE</b>            | INTEGRAL LED        | <b>IP RATING</b>               | IP20            |
| <b>INTEGRAL LIGHT SOURCE</b>      | LED 1W 2700K        | <b>WIDTH</b>                   | 50              |
| <b>COLOUR TEMPERATURE</b>         | 2700K               | <b>HEIGHT</b>                  | 178             |
| <b>WATTAGE (W) - INTEGRAL LED</b> | 1W                  | <b>PROJECTION</b>              | 108MM           |
| <b>CE</b>                         | YES                 | <b>BACKPLATE DIMENSIONS</b>    | 178 X 50MM      |
| <b>UKCA</b>                       | YES                 | <b>CUTOUT DIMENSIONS</b>       | 150 X 32MM      |
| <b>UL</b>                         | YES                 | <b>NET PRODUCT WEIGHT</b>      | 0.35KG          |
| <b>DRIVER LOCATION</b>            | INTEGRAL            | <b>OVERALL HEIGHT AS SHOWN</b> | 178MM           |
| <b>SWITCH TYPE</b>                | PUSH                | <b>OVERALL WIDTH AS SHOWN</b>  | 50MM            |

### FOR MORE INFORMATION ABOUT THIS PRODUCT:

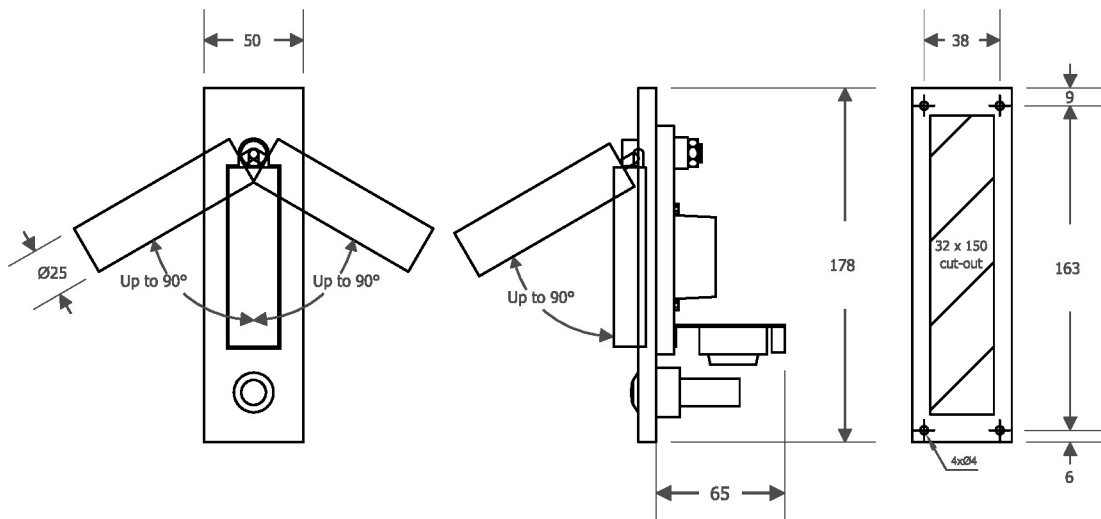
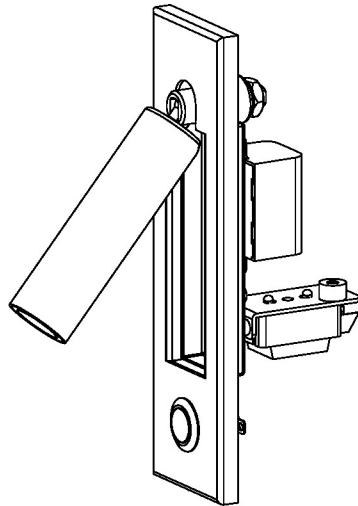
Email: [sales@chelsom.co.uk](mailto:sales@chelsom.co.uk) | Call: +44 (0)1253 831400

Chelsom Limited, Heritage House, Clifton Road, Blackpool, Lancashire FY4 4QA, United Kingdom

[wordpress-700079-2614039.cloudwaysapps.com](https://wordpress-700079-2614039.cloudwaysapps.com)

# — CHELSOM —

EST. 1947



**LED/5/2/SW**

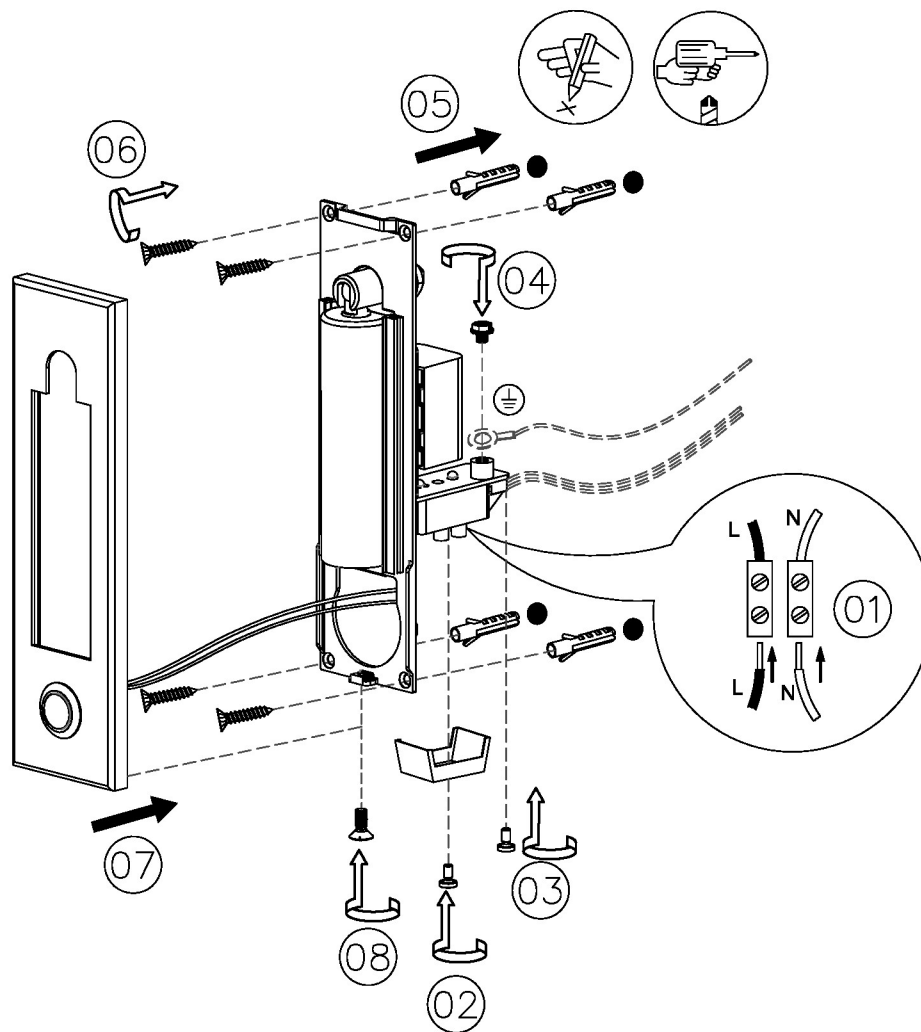
**Revision A**

[www.chelsom.co.uk](http://www.chelsom.co.uk)

# — CHELSOM —

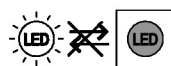
EST. 1947

FOLLOW THE NUMBERED ASSEMBLY SEQUENCE

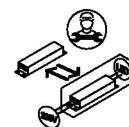


## SLR Information

This product contains a light source  
of Energy Efficiency Class E  
Regulation 2021 No. 1095



Non-replaceable  
light source



Control gear  
replaceable by  
qualified person

[www.chelsom.co.uk](http://www.chelsom.co.uk)