



#### FEATURES

A WARM WHITE LED HEADBOARD READING LIGHT IS HOUSED WITHIN A CYLINDRICAL HEAD THAT SWIVELS 90° LEFT, RIGHT OR FORWARD AND 'DOCKS' INTO A SEMI RECESSED BACKPLATE, WHICH CAN BE VERTICALLY OR HORIZONTALLY MOUNTED.

#### MATERIAL

STEEL AND ALUMINIUM

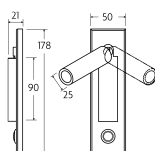
#### FINISH

ENGLISH BRASS (EBR)

#### CERTIFICATIONS

CE UK CA UL IP20

#### DIMENSIONS



## FULL TECHNICAL SPECIFICATION

MATERIAL	STEEL AND ALUMINIUM	DIMMABLE AS STANDARD?	BY REQUEST ONLY
FINISH	ENGLISH BRASS (EBR)	INSULATION RATING	CLASS I
LAMPHOLDER TYPE	INTEGRAL LED	IP RATING	IP20
INTEGRAL LIGHT SOURCE	LED 1W 2700K	WIDTH	50
COLOUR TEMPERATURE	2700K	HEIGHT	178
WATTAGE (W) - INTEGRAL LED	1W	PROJECTION	108MM
CE	YES	BACKPLATE DIMENSIONS	178 X 50MM
UKCA	YES	CUTOUT DIMENSIONS	150 X 32MM
UL	YES	NET PRODUCT WEIGHT	0.35KG
DRIVER LOCATION	INTEGRAL	OVERALL HEIGHT AS SHOWN	178MM
SWITCH TYPE	PUSH	OVERALL WIDTH AS SHOWN	50MM

### FOR MORE INFORMATION ABOUT THIS PRODUCT:

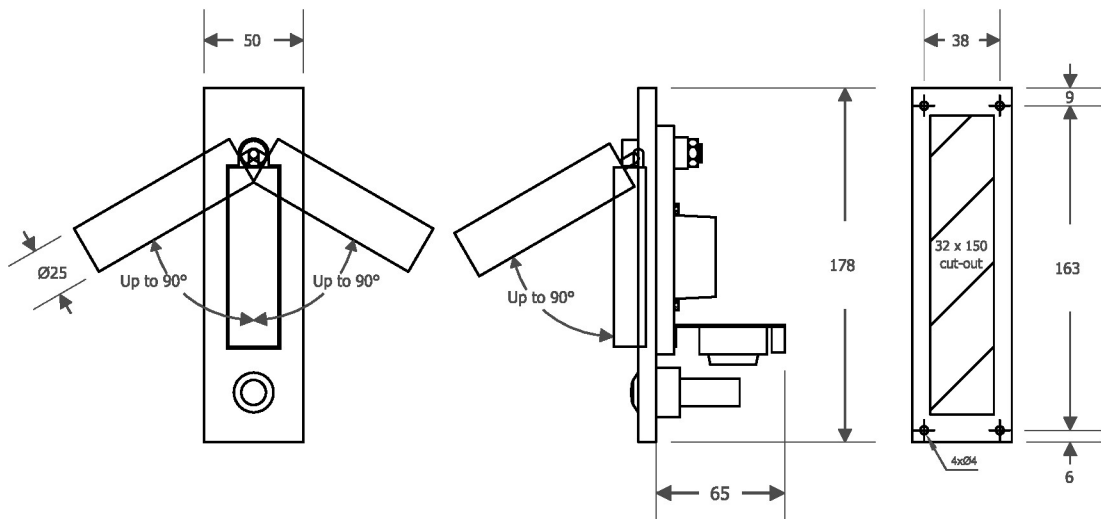
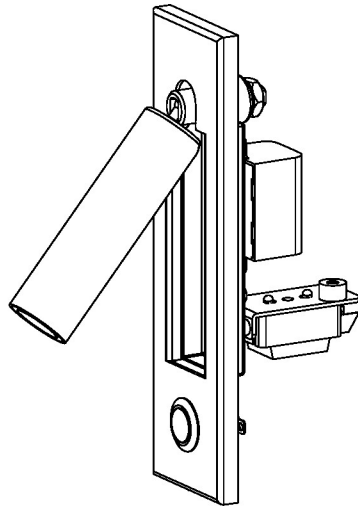
Email: [sales@chelsom.co.uk](mailto:sales@chelsom.co.uk) | Call: +44 (0)1253 831400

Chelsom Limited, Heritage House, Clifton Road, Blackpool, Lancashire FY4 4QA, United Kingdom

[wordpress-700079-2614039.cloudwaysapps.com](https://wordpress-700079-2614039.cloudwaysapps.com)

# — CHELSOM —

EST. 1947



**LED/5/2/SW**

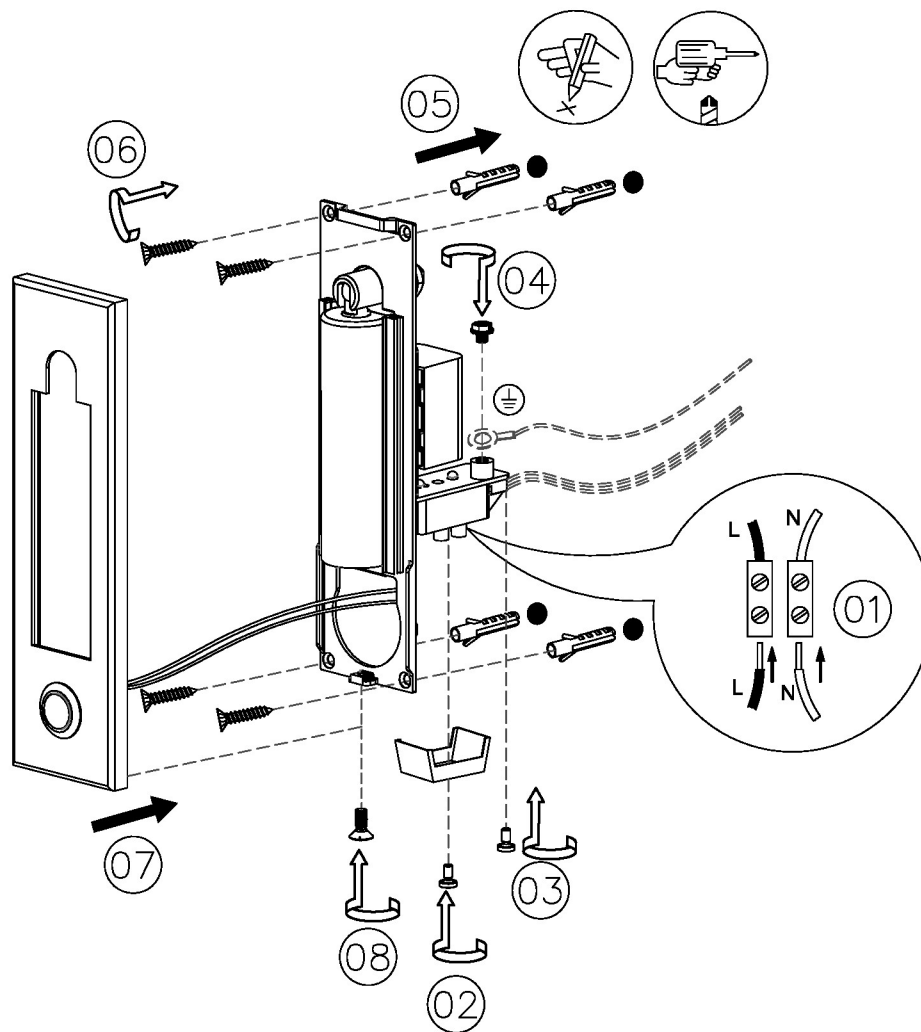
**Revision A**

[www.chelsom.co.uk](http://www.chelsom.co.uk)

# — CHELSOM —

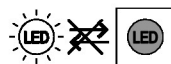
EST. 1947

FOLLOW THE NUMBERED ASSEMBLY SEQUENCE

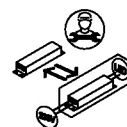


## SLR Information

This product contains a light source  
of Energy Efficiency Class E  
Regulation 2021 No. 1095



Non-replaceable  
light source



Control gear  
replaceable by  
qualified person

[www.chelsom.co.uk](http://www.chelsom.co.uk)