



FEATURES

A WARM WHITE LED HEADBOARD READING LIGHT IS HOUSED WITHIN A CYLINDRICAL HEAD THAT SWIVELS 90° LEFT, RIGHT OR FORWARD AND 'DOCKS' INTO A SEMI RECESSED BACKPLATE, WHICH CAN BE VERTICALLY OR HORIZONTALLY MOUNTED.

MATERIAL

STEEL AND ALUMINIUM

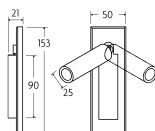
FINISH

BLACK BRONZE WITH ENGLISH BRASS (BB/EBR)

CERTIFICATIONS

CE UK CA UL IP20

DIMENSIONS



FULL TECHNICAL SPECIFICATION

| | | | |
|-----------------------------------|--|--------------------------------|-----------------|
| MATERIAL | STEEL AND ALUMINIUM | DIMMABLE AS STANDARD? | BY REQUEST ONLY |
| FINISH | BLACK BRONZE WITH ENGLISH BRASS (BB/EBR) | INSULATION RATING | CLASS I |
| LAMPHOLDER TYPE | INTEGRAL LED | IP RATING | IP20 |
| INTEGRAL LIGHT SOURCE | LED 1W 2700K | WIDTH | 50 |
| COLOUR TEMPERATURE | 2700K | HEIGHT | 153 |
| WATTAGE (W) - INTEGRAL LED | 1W | PROJECTION | 108MM |
| CE | YES | BACKPLATE DIMENSIONS | 153 X 50MM |
| UKCA | YES | CUTOUT DIMENSIONS | 120 X 32MM |
| UL | YES | NET PRODUCT WEIGHT | 0.35KG |
| DRIVER LOCATION | INTEGRAL | OVERALL HEIGHT AS SHOWN | 153MM |
| SWITCH TYPE | DOCKING SWITCH | OVERALL WIDTH AS SHOWN | 50MM |

FOR MORE INFORMATION ABOUT THIS PRODUCT:

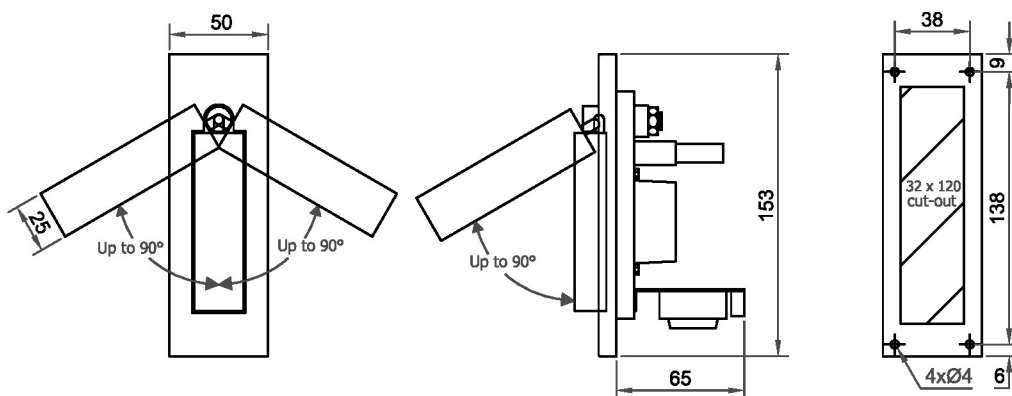
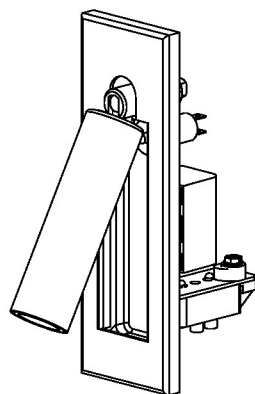
Email: sales@chelsom.co.uk | Call: +44 (0)1253 831400

Chelsom Limited, Heritage House, Clifton Road, Blackpool, Lancashire FY4 4QA, United Kingdom

wordpress-700079-2614039.cloudwaysapps.com

— CHELSOM —

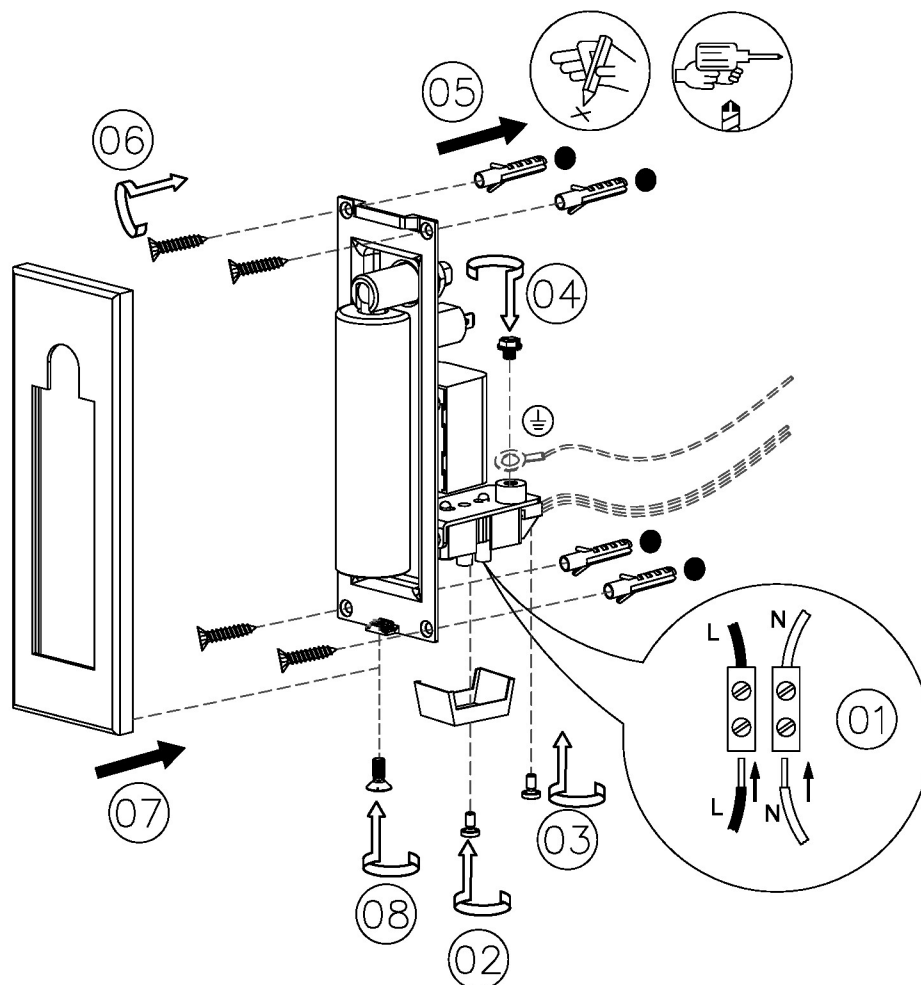
EST. 1947



— CHELSOM —

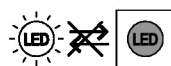
EST. 1947

FOLLOW THE NUMBERED ASSEMBLY SEQUENCE

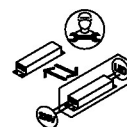


SLR Information

This product contains a light source
of Energy Efficiency Class E
Regulation 2021 No. 1095



Non-replaceable
light source



Control gear
replaceable by
qualified person

www.chelsom.co.uk