



FEATURES

SUBSTANTIAL SQUARE SECTION ARM SUPPORTS LAMP. BLACK BRONZE METALWORK HAS CONTRASTING ACCENTS IN ENGLISH BRASS. SQUARE OUTER SHADE IN SMOKE TRANSPARENT WITH NATURAL PARCHMENT INNER CYLINDER SHADE - OTHER FABRIC OPTIONS ARE AVAILABLE.

MATERIAL

STEEL

FINISH

BLACK BRONZE WITH ENGLISH BRASS

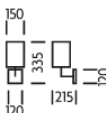
RECOMMENDED LAMP

1 X E27 7W LED 2700K

CERTIFICATIONS

CE UK CA UL IP20

DIMENSIONS



FULL TECHNICAL SPECIFICATION

MATERIAL	STEEL	IP RATING	IP20
FINISH	BLACK BRONZE WITH ENGLISH BRASS	WIDTH WITH SHADE	150
LAMPHOLDER TYPE	E27	HEIGHT WITH SHADE	335
RECOMMENDED LAMP	1 X E27 7W LED 2700K	PROJECTION	215MM
MAX WATTAGE (RETROFIT)	30W	BACKPLATE DIMENSIONS	120 X 120MM
CE	YES	NET PRODUCT WEIGHT	1.4KG
UKCA	YES	OVERALL HEIGHT WITH SHADE AS SHOWN	335MM
UL	YES	OVERALL HEIGHT WITHOUT SHADE	145MM
DIMMABLE AS STANDARD?	YES	OVERALL WIDTH WITH SHADE AS SHOWN	150MM
DIMMING TYPE	PHASE	OVERALL WIDTH WITHOUT SHADE	120MM
INSULATION RATING	CLASS I		

FOR MORE INFORMATION ABOUT THIS PRODUCT:

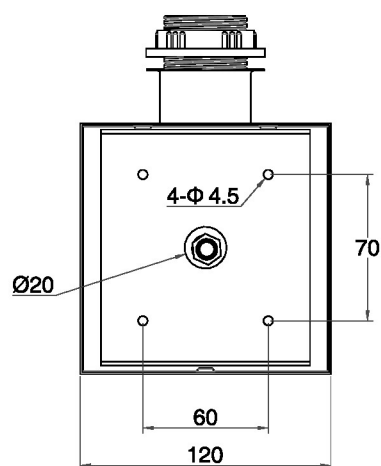
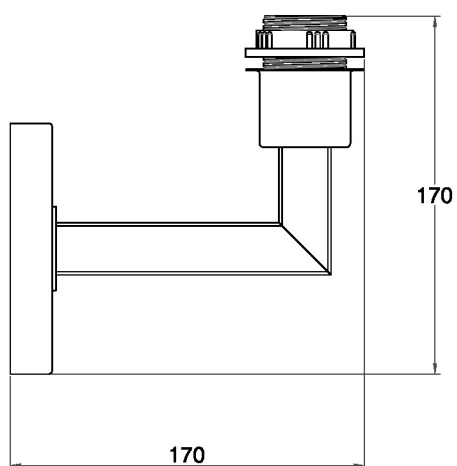
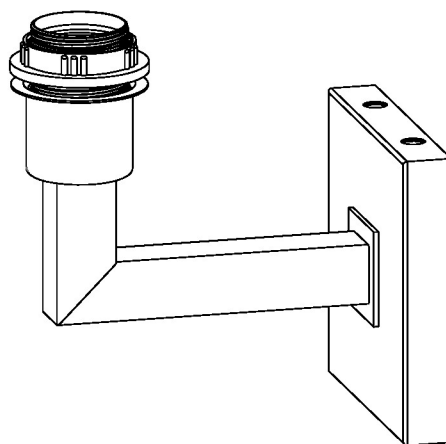
Email: sales@chelsom.co.uk | Call: +44 (0)1253 831400

Chelsom Limited, Heritage House, Clifton Road, Blackpool, Lancashire FY4 4QA, United Kingdom

wordpress-700079-2614039.cloudwaysapps.com

— CHELSOM —

EST. 1947



— CHELSOM —

EST. 1947

FOLLOW THE NUMBERED ASSEMBLY SEQUENCE

