



#### FEATURES

A DECORATIVE GUESTROOM OR PUBLIC AREA WALL LIGHT WHICH FEATURES A WARMLY LIT MATT OPAL GLOBE SET ASYMMETRICALLY WITHIN A BRASS RING. SUPPLIED FLAT-PACKED TO REDUCE PACKAGING VOLUME AND CARBON FOOTPRINT.

#### MATERIAL

STEEL AND GLASS

#### FINISH

BRUSHED BRASS WITH SATIN BLACK AND MATT OPAL GLASS

#### RECOMMENDED LAMP

1 X E14 4.5W LED 2700K

#### CERTIFICATIONS

CE UKCA UL  $\pm$  IP20

#### DIMENSIONS



## FULL TECHNICAL SPECIFICATION

MATERIAL	STEEL AND GLASS	DIMMING TYPE	PHASE
FINISH	BRUSHED BRASS WITH SATIN BLACK AND MATT OPAL GLASS	INSULATION RATING	CLASS I
LAMPHOLDER TYPE	E14	IP RATING	IP20
RECOMMENDED LAMP	1 X E14 4.5W LED 2700K	PROJECTION	255MM
MAX WATTAGE (RETROFIT)	30W	BACKPLATE DIMENSIONS	100MM DIAMETER
CE	YES	NET PRODUCT WEIGHT	2KG
UKCA	YES	OVERALL HEIGHT AS SHOWN	230MM
UL	YES	OVERALL WIDTH AS SHOWN	150MM
DIMMABLE AS STANDARD?	YES		

### FOR MORE INFORMATION ABOUT THIS PRODUCT:

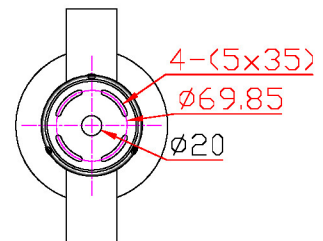
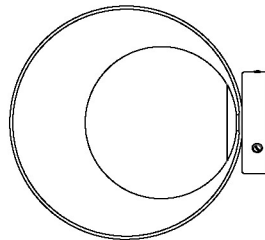
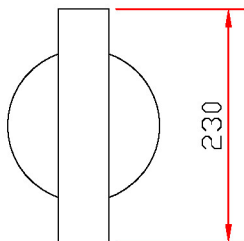
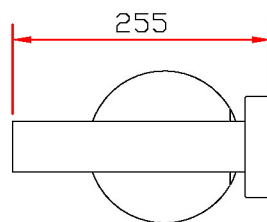
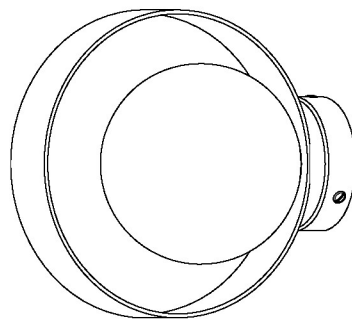
Email: [sales@chelsom.co.uk](mailto:sales@chelsom.co.uk) | Call: +44 (0)1253 831400

Chelsom Limited, Heritage House, Clifton Road, Blackpool, Lancashire FY4 4QA, United Kingdom

[wordpress-700079-2614039.cloudwaysapps.com](https://wordpress-700079-2614039.cloudwaysapps.com)

# — CHELSOM —

EST. 1947



# — CHELSOM —

EST. 1947

FOLLOW THE NUMBERED ASSEMBLY SEQUENCE

