



FEATURES

A REFINED AND ROBUST WALL LIGHT FEATURING AN OPTIONAL HEMP FABRIC SHADE WITH STANDARD OPAL ACRYLIC TOP DIFFUSER. SHADE IS SUSPENDED FROM A METAL RING DETAIL. SUPPLIED FLAT-PACKED TO REDUCE PACKAGING VOLUME AND CARBON FOOTPRINT.

MATERIAL

STEEL AND ACRYLIC

FINISH

BLACK BRONZE (BB)

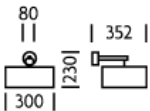
RECOMMENDED LAMP

1 X E27 7W LED 2700K

CERTIFICATIONS

CE UK CA UL IP20

DIMENSIONS



FULL TECHNICAL SPECIFICATION

MATERIAL	STEEL AND ACRYLIC	DIMMING TYPE	PHASE
FINISH	BLACK BRONZE (BB)	INSULATION RATING	CLASS I
LAMPHOLDER TYPE	E27	IP RATING	IP20
RECOMMENDED LAMP	1 X E27 7W LED 2700K	PROJECTION	352MM
MAX WATTAGE (RETROFIT)	30W	BACKPLATE DIMENSIONS	80MM DIAMETER
CE	YES	NET PRODUCT WEIGHT	1KG
UKCA	YES	OVERALL HEIGHT AS SHOWN	230MM
UL	YES	OVERALL WIDTH AS SHOWN	300MM
DIMMABLE AS STANDARD?	YES		

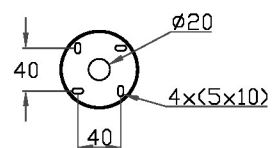
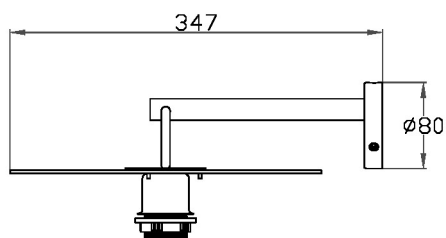
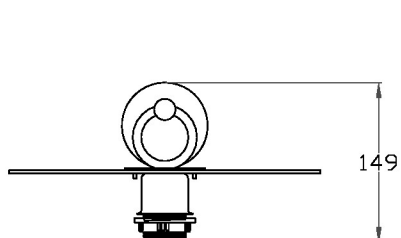
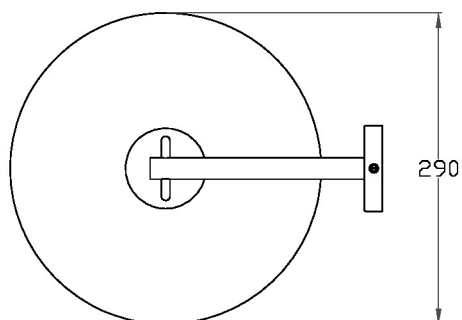
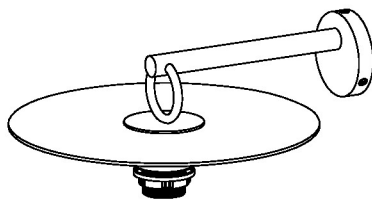
FOR MORE INFORMATION ABOUT THIS PRODUCT:

Email: [sales@chelsom.co.uk](mailto:sales@chelsom.co.uk) | Call: +44 (0)1253 831400

Chelsom Limited, Heritage House, Clifton Road, Blackpool, Lancashire FY4 4QA, United Kingdom  
[wordpress-700079-2614039.cloudwaysapps.com](https://wordpress-700079-2614039.cloudwaysapps.com)

# — CHELSOM —

EST. 1947



# — CHELSOM —

EST. 1947

FOLLOW THE NUMBERED ASSEMBLY SEQUENCE

