



#### FEATURES

A LED BEDSIDE READING LIGHT WHICH HAS A CYLINDRICAL HEAD WITH A BLACK ON/OFF SWITCH. FLEXI ARM IS ROBUST 10MM DIAMETER AND TESTED FOR FUNCTION AND DURABILITY. DRIVER IS INTEGRAL IN THE BACKBOX AND INCLUDED IN PRICE.

#### MATERIAL

STEEL

#### FINISH

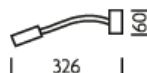
BRUSHED NICKEL (BN)

#### CERTIFICATIONS

CE UK CA IP20

studio

#### DIMENSIONS



## FULL TECHNICAL SPECIFICATION

MATERIAL	STEEL	SWITCH TYPE	PUSH
FINISH	BRUSHED NICKEL (BN)	DIMMABLE AS STANDARD?	BY REQUEST ONLY
LAMPHOLDER TYPE	INTEGRAL LED	INSULATION RATING	CLASS I
INTEGRAL LIGHT SOURCE	LED 1W 2700K	IP RATING	IP20
COLOUR TEMPERATURE	2700K	PROJECTION	326MM
WATTAGE (W) - INTEGRAL LED	1W	BACKPLATE DIMENSIONS	60MM DIAMETER
CE	YES	NET PRODUCT WEIGHT	0.8KG
UKCA	YES	OVERALL HEIGHT AS SHOWN	60MM
UL	FOR UL PLEASE ENQUIRE.	OVERALL WIDTH AS SHOWN	60MM
DRIVER LOCATION	INTEGRAL		

### FOR MORE INFORMATION ABOUT THIS PRODUCT:

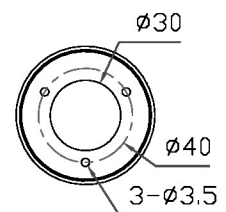
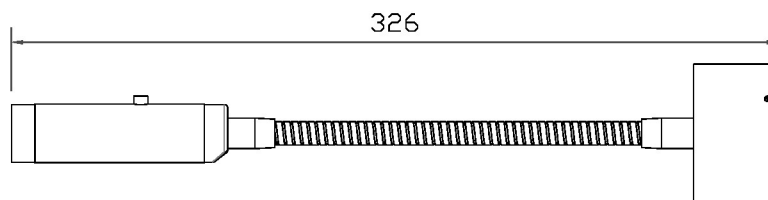
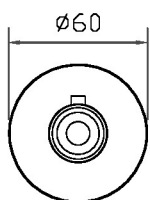
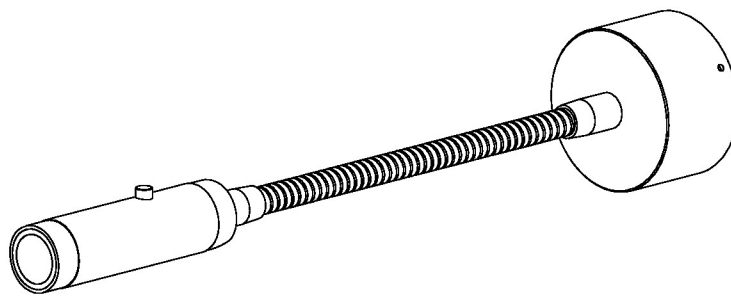
Email: [sales@chelsom.co.uk](mailto:sales@chelsom.co.uk) | Call: +44 (0)1253 831400

Chelsom Limited, Heritage House, Clifton Road, Blackpool, Lancashire FY4 4QA, United Kingdom

[wordpress-700079-2614039.cloudwaysapps.com](https://wordpress-700079-2614039.cloudwaysapps.com)

# — CHELSOM —

EST. 1947



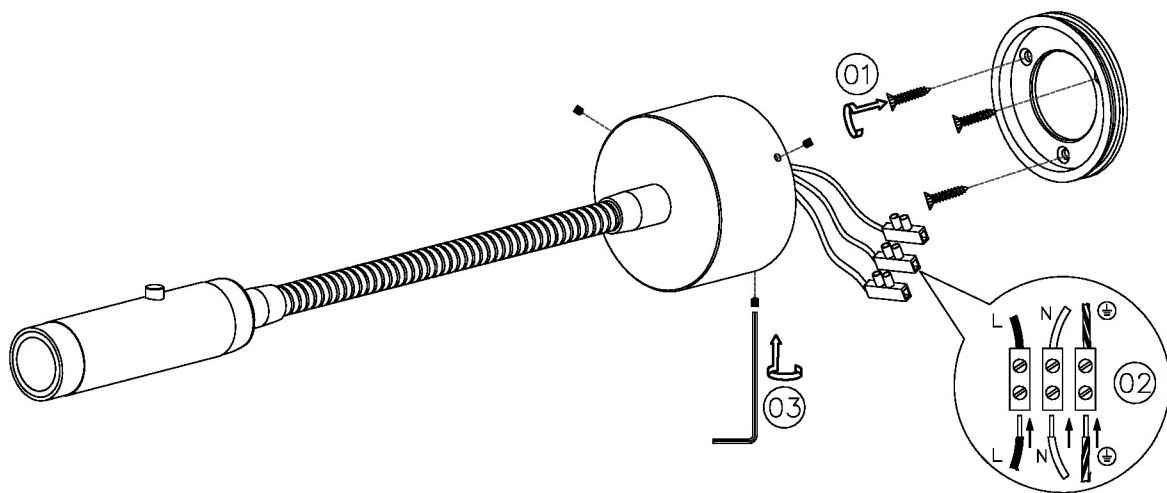
**LED/13**

**Revision A**

# — CHELSOM —

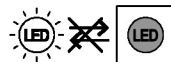
EST. 1947

FOLLOW THE NUMBERED ASSEMBLY SEQUENCE

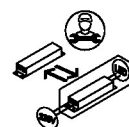


## SLR Information

This product contains a light source  
of Energy Efficiency Class E  
Regulation 2021 No. 1095



Non-replaceable  
light source



Control gear  
replaceable by  
qualified person