



FEATURES

SLENDER GUESTROOM OR CABIN BEDSIDE WALL LIGHT WITH MAIN ROOM ILLUMINATION FROM WITHIN THE FABRIC SHADE, AN LED READING LIGHT AND A USB-C CHARGING PORT. THE READING LIGHT HAS A DOCKING SWITCH, THE MAIN LIGHT A PUSH SWITCH. THE USB-C PORT REMAINS POWERED EVEN WHEN LIGHTS ARE SWITCHED OFF.

MATERIAL

STEEL AND ALUMINIUM

FINISH

BLACK BRONZE (BB)

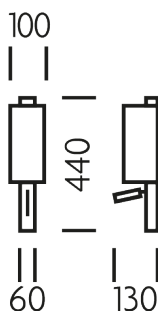
RECOMMENDED LAMP

1 X E27 7W LED 2700K PLUS 1 X LED 1W 2700K

CERTIFICATIONS

CE UK CA   IP20

DIMENSIONS



FULL TECHNICAL SPECIFICATION

MATERIAL	STEEL AND ALUMINIUM	SWITCH TYPE	PUSH SWITCH AND DOCKING SWITCH
FINISH	BLACK BRONZE (BB)	DIMMABLE AS STANDARD?	BY REQUEST ONLY
LAMPHOLDER TYPE	E27 AND INTEGRAL LED	USB	YES
RECOMMENDED LAMP	1 X E27 7W LED 2700K PLUS 1 X LED 1W 2700K	INSULATION RATING	CLASS I
COLOUR TEMPERATURE	2700K	IP RATING	IP20
MAX WATTAGE (RETROFIT)	30W	PROJECTION	130MM
WATTAGE (W) - INTEGRAL LED	1W	BACKPLATE DIMENSIONS	440 X 60MM
CE	YES	NET PRODUCT WEIGHT	1.55KG
UKCA	YES	OVERALL HEIGHT AS SHOWN	440MM
UL	FOR UL PLEASE ENQUIRE.	OVERALL WIDTH AS SHOWN	100MM
DRIVER LOCATION	INTEGRAL		

FOR MORE INFORMATION ABOUT THIS PRODUCT:

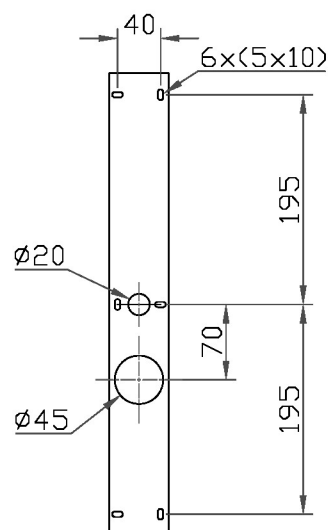
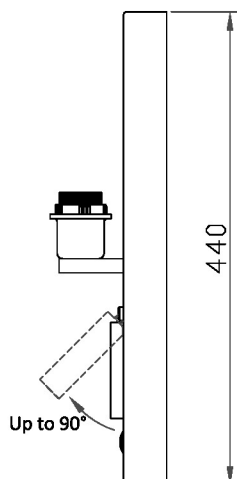
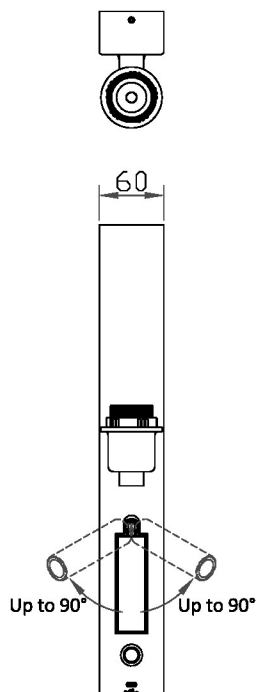
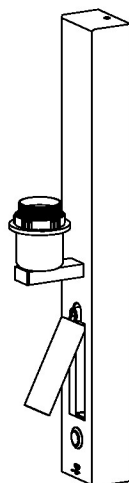
Email: sales@chelsom.co.uk | Call: +44 (0)1253 831400

Chelsom Limited, Heritage House, Clifton Road, Blackpool, Lancashire FY4 4QA, United Kingdom

wordpress-700079-2614039.cloudwaysapps.com

— CHELSOM —

EST. 1947



LED/5/2/W1/USBC

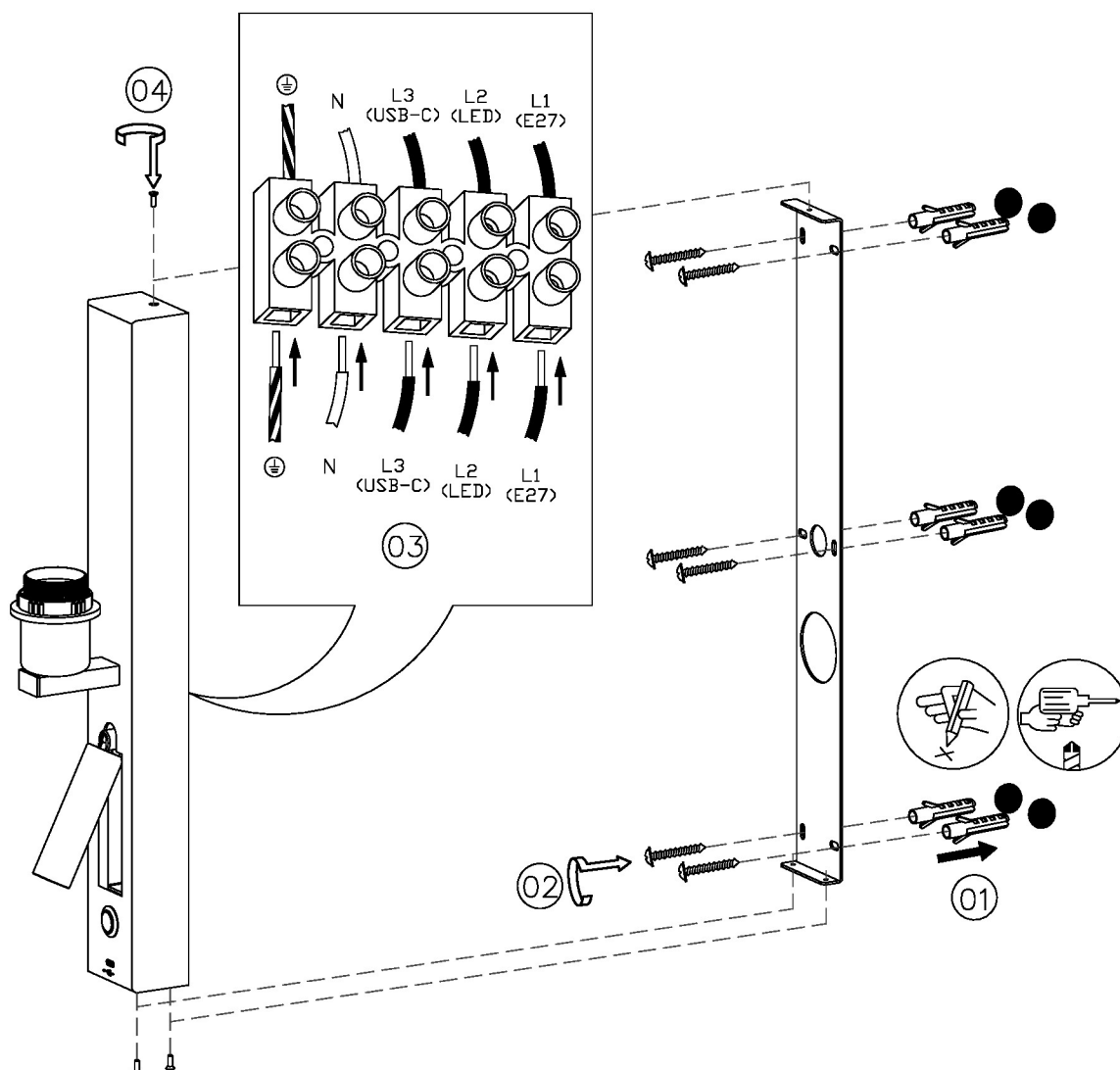
www.chelsom.co.uk

Revision A

— CHELSOM —

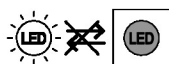
EST. 1947

FOLLOW THE NUMBERED ASSEMBLY SEQUENCE

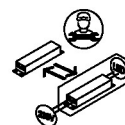


SLR Information

This product contains a light source
of Energy Efficiency Class E
Regulation 2021 No. 1095



Non-replaceable
light source



Control gear
replaceable by
qualified person

www.chelsom.co.uk