



FEATURES

AN OPAL GLASS GLOBE IS ENCASED WITHIN A GOLDEN BRONZE SCONCE WHICH INTERLOCKS WITH A SOLID WOODEN EBONY RECTANGULAR SECTION. WALL LIGHT HAS CONCEALED WALL FIXINGS. SUPPLIED FLAT-PACKED TO REDUCE PACKAGING VOLUME AND CARBON FOOTPRINT.

MATERIAL

WOOD, STEEL AND GLASS

FINISH

EBONY WITH GOLDEN BRONZE (EB/GB) AND MATT OPAL GLASS

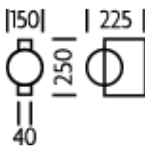
RECOMMENDED LAMP

1 X E14 4.5W LED 2700K

CERTIFICATIONS

CE UK CA UL \pm IP20

DIMENSIONS



FULL TECHNICAL SPECIFICATION

MATERIAL	WOOD, STEEL AND GLASS	DIMMING TYPE	PHASE
FINISH	EBONY WITH GOLDEN BRONZE (EB/GB) AND MATT OPAL GLASS	INSULATION RATING	CLASS I
LAMPHOLDER TYPE	E14	IP RATING	IP20
RECOMMENDED LAMP	1 X E14 4.5W LED 2700K	PROJECTION	225MM
MAX WATTAGE (RETROFIT)	30W	BACKPLATE DIMENSIONS	250 X 40MM
CE	YES	NET PRODUCT WEIGHT	1.4KG
UKCA	YES	OVERALL HEIGHT AS SHOWN	250MM
UL	YES	OVERALL WIDTH AS SHOWN	150MM
DIMMABLE AS STANDARD?	YES		

FOR MORE INFORMATION ABOUT THIS PRODUCT:

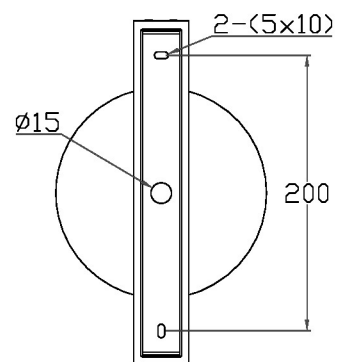
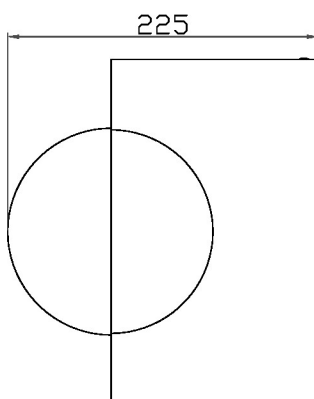
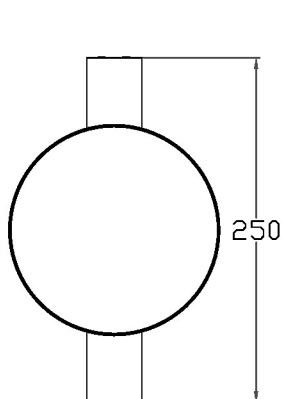
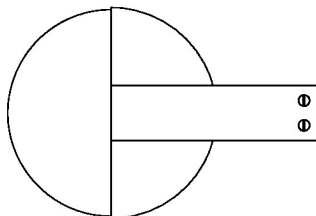
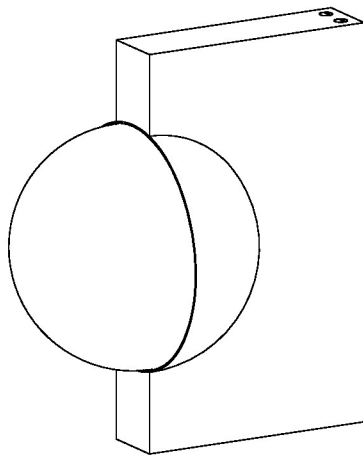
Email: sales@chelsom.co.uk | Call: +44 (0)1253 831400

Chelsom Limited, Heritage House, Clifton Road, Blackpool, Lancashire FY4 4QA, United Kingdom

wordpress-700079-2614039.cloudwaysapps.com

— CHELSOM —

EST. 1947



— CHELSOM —

EST. 1947

FOLLOW THE NUMBERED ASSEMBLY SEQUENCE

