



#### FEATURES

AN IMPOSING LARGE SCALE PUBLIC AREA WALL LIGHT WHICH FEATURES A ROBUST MATT OPAL GLASS. THE GLASS IS THREADED ONTO THE METALWORK FOR A SECURE FIXING. THE SUBSTANTIAL DOMED TOP CAP AND ALL THE METALWORK IS IN A BRUSHED BRASS FINISH.

#### MATERIAL

STEEL AND GLASS

#### FINISH

BRUSHED BRASS WITH MATT OPAL GLASS (BRB/OP)

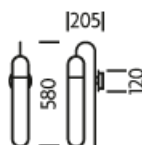
#### RECOMMENDED LAMP

1 X GU10 6W LED 2700K

#### CERTIFICATIONS

CE UK CA UL IP20

#### DIMENSIONS



## FULL TECHNICAL SPECIFICATION

MATERIAL	STEEL AND GLASS	DIMMING TYPE	PHASE
FINISH	BRUSHED BRASS WITH MATT OPAL GLASS (BRB/OP)	INSULATION RATING	CLASS I
LAMPHOLDER TYPE	GU10	IP RATING	IP20
RECOMMENDED LAMP	1 X GU10 6W LED 2700K	PROJECTION	205MM
MAX WATTAGE (RETROFIT)	10W	BACKPLATE DIMENSIONS	120MM DIAMETER
CE	YES	NET PRODUCT WEIGHT	2.5KG
UKCA	YES	OVERALL HEIGHT AS SHOWN	580MM
UL	YES	OVERALL WIDTH AS SHOWN	120MM
DIMMABLE AS STANDARD?	YES		

### FOR MORE INFORMATION ABOUT THIS PRODUCT:

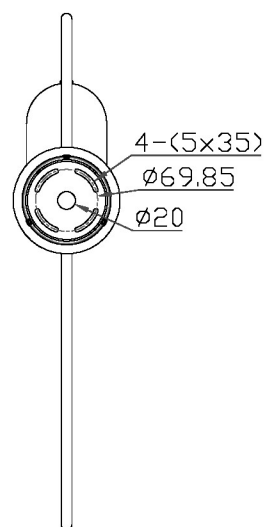
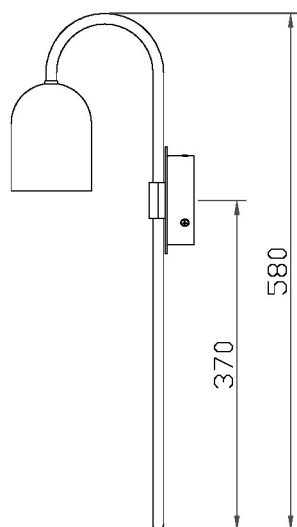
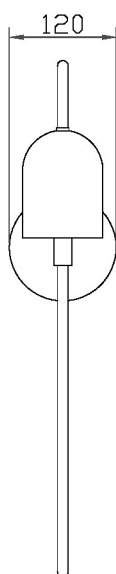
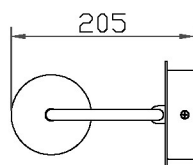
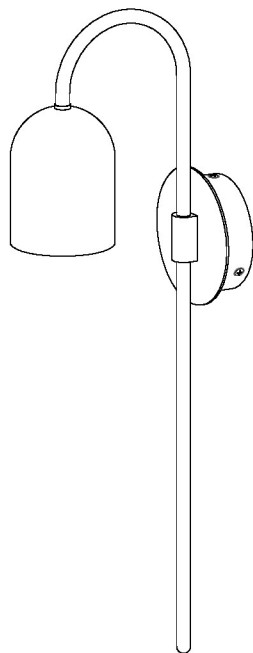
Email: [sales@chelsom.co.uk](mailto:sales@chelsom.co.uk) | Call: +44 (0)1253 831400

Chelsom Limited, Heritage House, Clifton Road, Blackpool, Lancashire FY4 4QA, United Kingdom

[wordpress-700079-2614039.cloudwaysapps.com](https://wordpress-700079-2614039.cloudwaysapps.com)

# — CHELSOM —

EST. 1947



# — CHELSOM —

EST. 1947

FOLLOW THE NUMBERED ASSEMBLY SEQUENCE

