



FEATURES

A WALL LIGHT WHICH IS TRANSITIONAL IN DESIGN FEATURING A REEDED COLUMN AND KNURLED LAMPHOLDER COVER.

MATERIAL

STEEL

FINISH

GOLDEN BRONZE WITH SATIN BLACK

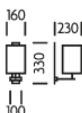
RECOMMENDED LAMP

1 X E27 7W LED 2700K

CERTIFICATIONS

CE UKCA UL ± IP20

DIMENSIONS



FULL TECHNICAL SPECIFICATION

MATERIAL	STEEL	DIMMING TYPE	PHASE
FINISH	GOLDEN BRONZE WITH SATIN BLACK	INSULATION RATING	CLASS I
LAMPHOLDER TYPE	E27	IP RATING	IP20
RECOMMENDED LAMP	1 X E27 7W LED 2700K	PROJECTION	230MM
MAX WATTAGE (RETROFIT)	30W	BACKPLATE DIMENSIONS	330 X 100MM
CE	YES	NET PRODUCT WEIGHT	0.8KG
UKCA	YES	OVERALL HEIGHT WITH SHADE AS SHOWN	330MM
UL	YES	OVERALL WIDTH WITH SHADE AS SHOWN	160MM
DIMMABLE AS STANDARD?	YES		

FOR MORE INFORMATION ABOUT THIS PRODUCT:

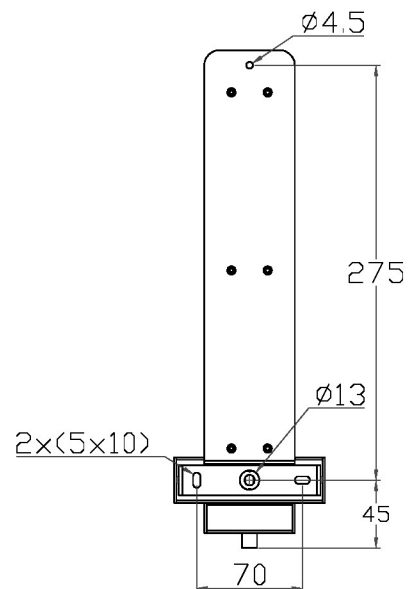
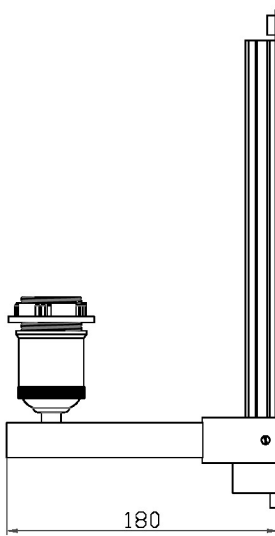
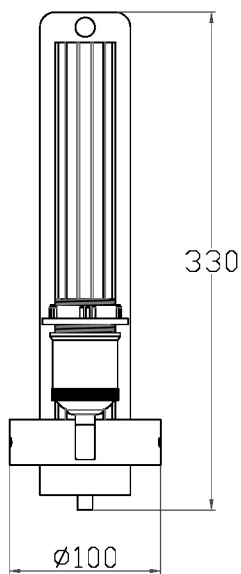
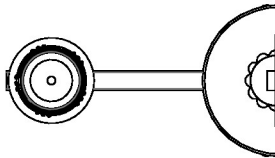
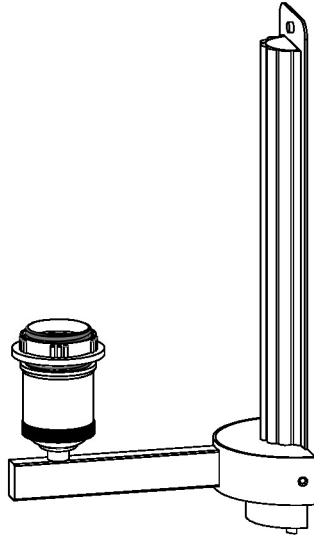
Email: sales@chelsom.co.uk | Call: +44 (0)1253 831400

Chelsom Limited, Heritage House, Clifton Road, Blackpool, Lancashire FY4 4QA, United Kingdom

wordpress-700079-2614039.cloudwaysapps.com

— CHELSOM —

EST. 1947



— CHELSOM —

EST. 1947

FOLLOW THE NUMBERED ASSEMBLY SEQUENCE

