



FEATURES

SHALLOW BACKPLATE AND SLENDER LIGHT BOX GIVES A PERFECTLY EVEN SPREAD OF WARM DIFFUSED DIMMABLE LED LIGHT THROUGH A FAUX ALABASTER ACRYLIC PANEL. DIFFERENT SHAPES AND SIZES GIVE GREAT VERSATILITY.

MATERIAL

STEEL, ALUMINIUM AND ACRYLIC

FINISH

BRUSHED GOLD (BRG) METALWORK WITH FAUX ALABASTER ACRYLIC

CERTIFICATIONS

CE UK CA UL IP20

DIMENSIONS



FULL TECHNICAL SPECIFICATION

MATERIAL	STEEL, ALUMINIUM AND ACRYLIC	DIMMABLE AS STANDARD?	YES
FINISH	BRUSHED GOLD (BRG) METALWORK WITH FAUX ALABASTER ACRYLIC	DIMMING TYPE	1-10V
LAMPHOLDER TYPE	INTEGRAL LED	INSULATION RATING	CLASS I
INTEGRAL LIGHT SOURCE	LED 14W 2700K	IP RATING	IP20
COLOUR TEMPERATURE	2700K	PROJECTION	60MM
WATTAGE (W) - INTEGRAL LED	14W	BACKPLATE DIMENSIONS	180 X 60MM
CE	YES	NET PRODUCT WEIGHT	2.4KG
UKCA	YES	OVERALL HEIGHT AS SHOWN	600MM
UL	YES	OVERALL WIDTH AS SHOWN	150MM
DRIVER LOCATION	INTEGRAL		

FOR MORE INFORMATION ABOUT THIS PRODUCT:

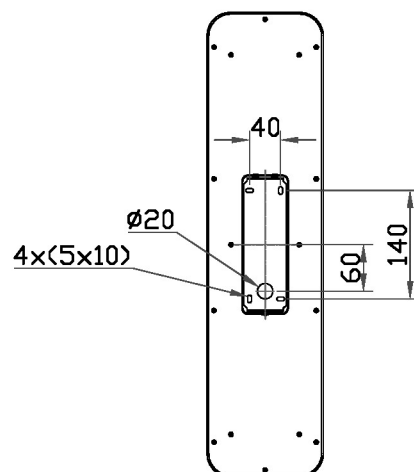
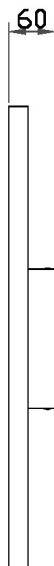
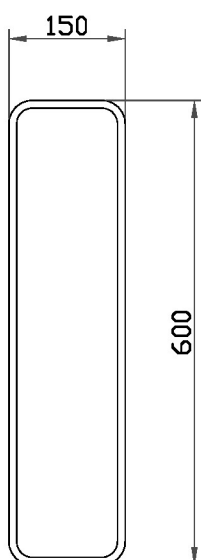
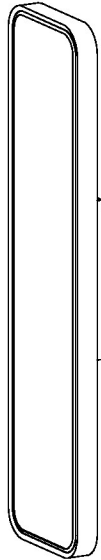
Email: sales@chelsom.co.uk | Call: +44 (0)1253 831400

Chelsom Limited, Heritage House, Clifton Road, Blackpool, Lancashire FY4 4QA, United Kingdom

wordpress-700079-2614039.cloudwaysapps.com

— CHELSOM —

EST. 1947



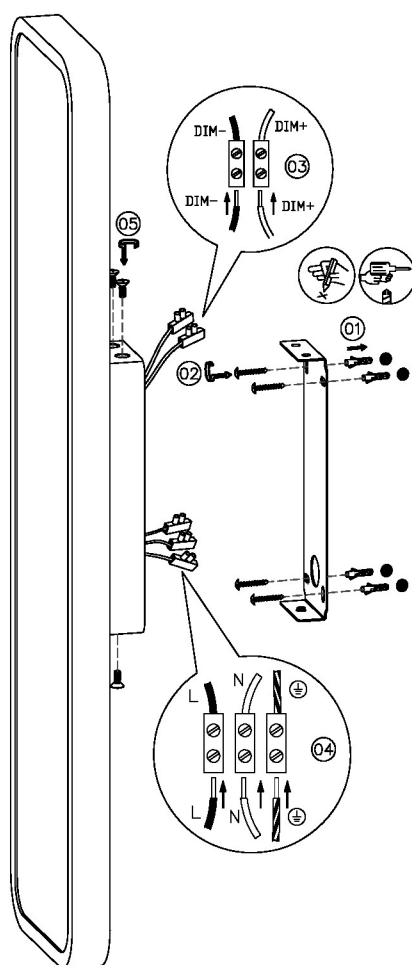
NM/6/600x150

Revision A

— CHELSOM —

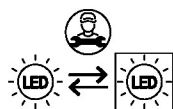
EST. 1947

FOLLOW THE NUMBERED ASSEMBLY SEQUENCE

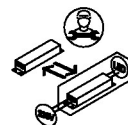


SLR Information

This product contains a light source
of Energy Efficiency Class E
Regulation 2021 No. 1095



LED light source
replaceable by
qualified person



Control gear
replaceable by
qualified person

www.chelsom.co.uk