



FEATURES

IP44 BATHROOM WALL LIGHT WITH WIPEABLE FABRIC SHADE.

MATERIAL

STEEL

FINISH

POLISHED CHROME (C)

RECOMMENDED LAMP

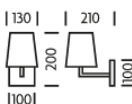
1 X G9 2W LED 3000K

CERTIFICATIONS

CE UK CA UL IP44

studio

DIMENSIONS



FULL TECHNICAL SPECIFICATION

MATERIAL	STEEL	INSULATION RATING	CLASS I
FINISH	POLISHED CHROME (C)	IP RATING	IP44
LAMPHOLDER TYPE	G9	BATHROOM ZONE	ZONE 2
RECOMMENDED LAMP	1 X G9 2W LED 3000K	PROJECTION	210MM
MAX WATTAGE (RETROFIT)	15W	BACKPLATE DIMENSIONS	100 X 100MM
CE	YES	NET PRODUCT WEIGHT	0.5KG
UKCA	YES	OVERALL HEIGHT AS SHOWN	200MM
UL	YES	OVERALL WIDTH AS SHOWN	130MM
DIMMABLE AS STANDARD?	BY REQUEST ONLY		

FOR MORE INFORMATION ABOUT THIS PRODUCT:

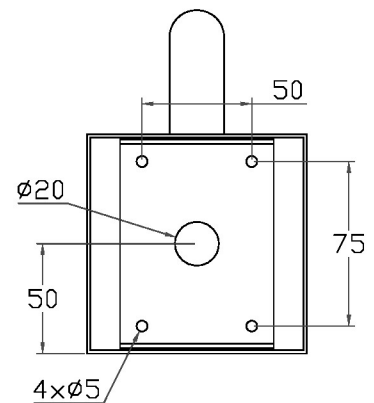
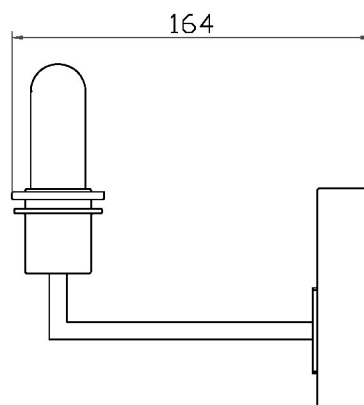
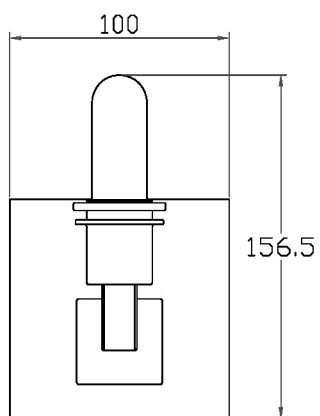
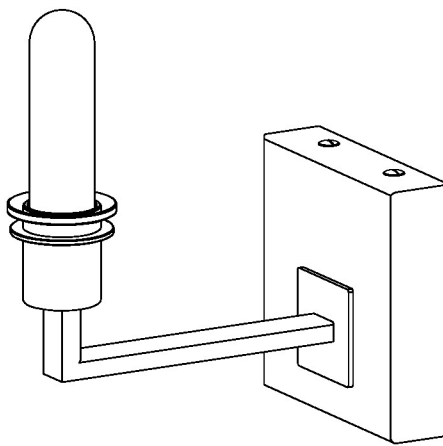
Email: sales@chelsom.co.uk | Call: +44 (0)1253 831400

Chelsom Limited, Heritage House, Clifton Road, Blackpool, Lancashire FY4 4QA, United Kingdom

wordpress-700079-2614039.cloudwaysapps.com

— CHELSOM —

EST. 1947



— CHELSOM —

EST. 1947

FOLLOW THE NUMBERED ASSEMBLY SEQUENCE

