



FEATURES

SEMI RECESSED HEADBOARD READING LIGHT WITH KNURLED CYLINDER HEAD. DOCKING SWITCH OPERATION.

MATERIAL

STEEL AND ALUMINIUM

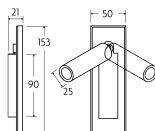
FINISH

BRUSHED BRASS (BRB)

CERTIFICATIONS

CE UK CA UL ± IP20

DIMENSIONS



FULL TECHNICAL SPECIFICATION

MATERIAL	STEEL AND ALUMINIUM	SWITCH TYPE	DOCKING SWITCH
FINISH	BRUSHED BRASS (BRB)	DIMMABLE AS STANDARD?	BY REQUEST ONLY
LAMPHOLDER TYPE	INTEGRAL LED	INSULATION RATING	CLASS I
INTEGRAL LIGHT SOURCE	LED 1W 2700K	IP RATING	IP20
COLOUR TEMPERATURE	2700K	PROJECTION	108MM
WATTAGE (W) - INTEGRAL LED	1W	BACKPLATE DIMENSIONS	153 X 50MM
CE	YES	CUTOUT DIMENSIONS	120 X 32MM
UKCA	YES	NET PRODUCT WEIGHT	0.35KG
UL	YES	OVERALL HEIGHT AS SHOWN	153MM
DRIVER LOCATION	INTEGRAL	OVERALL WIDTH AS SHOWN	50MM

FOR MORE INFORMATION ABOUT THIS PRODUCT:

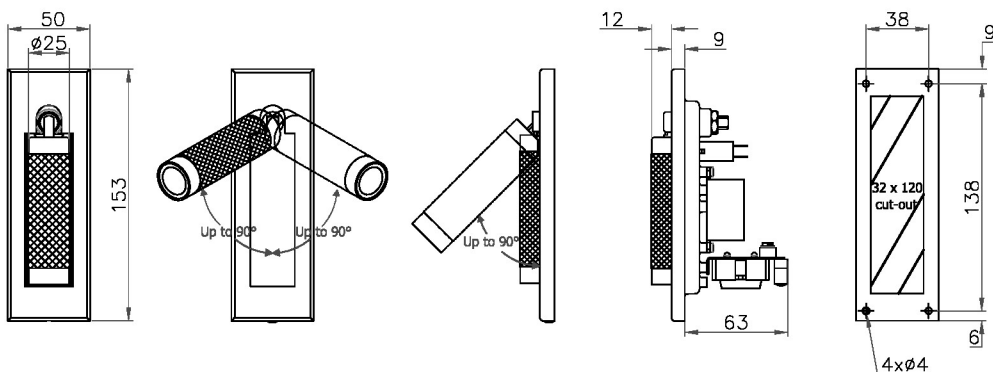
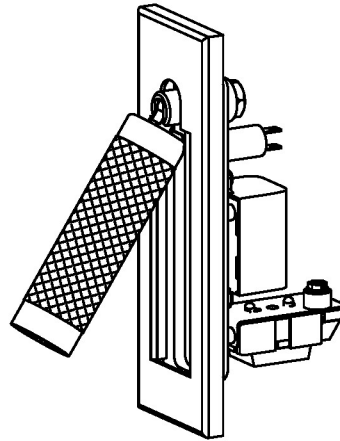
Email: sales@chelsom.co.uk | Call: +44 (0)1253 831400

Chelsom Limited, Heritage House, Clifton Road, Blackpool, Lancashire FY4 4QA, United Kingdom

wordpress-700079-2614039.cloudwaysapps.com

— CHELSOM —

EST. 1947



LED/5/2/KNURL

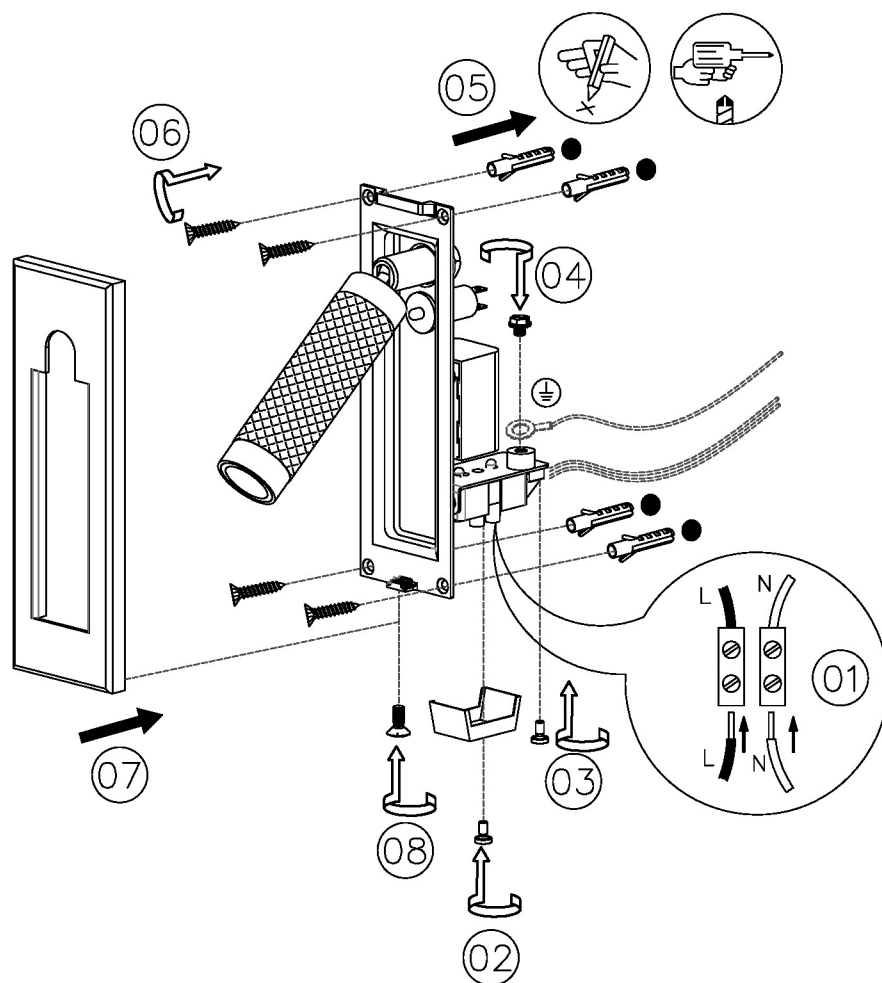
Revision A

www.chelsom.co.uk

— CHELSOM —

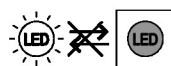
EST. 1947

FOLLOW THE NUMBERED ASSEMBLY SEQUENCE

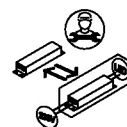


SLR Information

This product contains a light source
of Energy Efficiency Class E
Regulation 2021 No. 1095



Non-replaceable
light source



Control gear
replaceable by
qualified person

www.chelsom.co.uk