



### FEATURES

AN IMPOSING LARGE SCALE PUBLIC AREA WALL LIGHT WHICH FEATURES A ROBUST MATT OPAL GLASS. THE GLASS IS THREADED ONTO THE METALWORK FOR A SECURE FIXING. THE SUBSTANTIAL DOMED TOP CAP AND ALL THE METALWORK IS IN A BRUSHED BRASS FINISH.

### MATERIAL

STEEL AND GLASS

### FINISH

BRUSHED BRASS WITH MATT OPAL GLASS (BRB/OP)

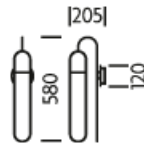
### RECOMMENDED LAMP

1 X GU10 6W LED 2700K

### CERTIFICATIONS

CE UK CA UL ± IP20

### DIMENSIONS



## FULL TECHNICAL SPECIFICATION

<b>MATERIAL</b>	STEEL AND GLASS	<b>DIMMING TYPE</b>	PHASE
<b>FINISH</b>	BRUSHED BRASS WITH MATT OPAL GLASS (BRB/OP)	<b>INSULATION RATING</b>	CLASS I
<b>LAMPHOLDER TYPE</b>	GU10	<b>IP RATING</b>	IP20
<b>RECOMMENDED LAMP</b>	1 X GU10 6W LED 2700K	<b>PROJECTION</b>	205MM
<b>MAX WATTAGE (RETROFIT)</b>	10W	<b>BACKPLATE DIMENSIONS</b>	120MM DIAMETER
<b>CE</b>	YES	<b>NET PRODUCT WEIGHT</b>	2.5KG
<b>UKCA</b>	YES	<b>OVERALL HEIGHT AS SHOWN</b>	580MM
<b>UL</b>	YES	<b>OVERALL WIDTH AS SHOWN</b>	120MM
<b>DIMMABLE AS STANDARD?</b>	YES		

### FOR MORE INFORMATION ABOUT THIS PRODUCT:

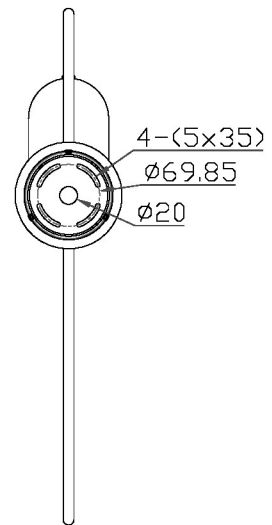
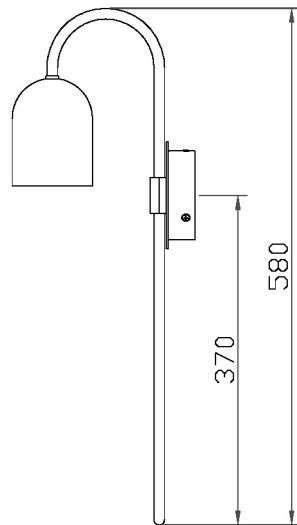
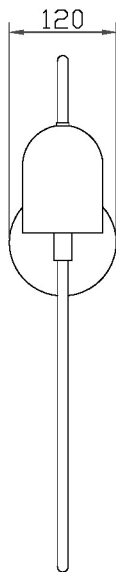
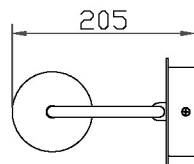
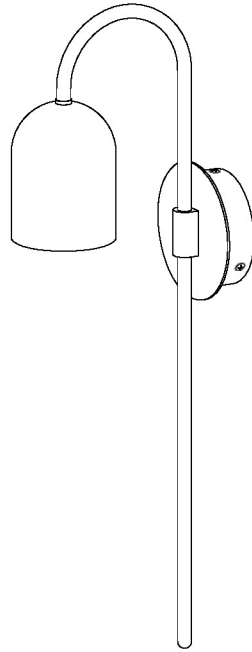
Email: [sales@chelson.co.uk](mailto:sales@chelson.co.uk) | Call: +44 (0)1253 831400

Chelson Limited, Heritage House, Clifton Road, Blackpool, Lancashire FY4 4QA, United Kingdom

[wordpress-700079-2614039.cloudwaysapps.com](http://wordpress-700079-2614039.cloudwaysapps.com)

# — CHELSOM —

EST. 1947



# — CHELSOM —

EST. 1947

FOLLOW THE NUMBERED ASSEMBLY SEQUENCE

