



FEATURES

A SQUARE EBONY WOODEN COLUMN WITH TOP AND BOTTOM BRUSHED BRASS METAL CAPS SUPPORTS AN ASYMMETRIC LONG TAPERED FABRIC SHADE WHICH SITS CLOSE TO THE UPRIGHT. INCLUDES A DIRECTIONAL SWITCHED LED READING LIGHT WITH INTEGRAL DRIVER IN THE BACKPLATE.

MATERIAL

WOOD AND STEEL

FINISH

EBONY WITH BRUSHED BRASS

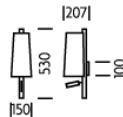
RECOMMENDED LAMP

1 X E27 7W LED 2700K PLUS 1 X LED 1W 2700K

CERTIFICATIONS

CE UK CA IP20

DIMENSIONS



FULL TECHNICAL SPECIFICATION

MATERIAL	WOOD AND STEEL	DRIVER LOCATION	INTEGRAL
FINISH	EBONY WITH BRUSHED BRASS	DIMMABLE AS STANDARD?	BY REQUEST ONLY
LAMPHOLDER TYPE	E27 AND INTEGRAL LED	INSULATION RATING	CLASS I
RECOMMENDED LAMP	1 X E27 7W LED 2700K PLUS 1 X LED 1W 2700K	IP RATING	IP20
COLOUR TEMPERATURE	2700K	PROJECTION	207MM
MAX WATTAGE (RETROFIT)	30W	BACKPLATE DIMENSIONS	100MM DIAMETER
WATTAGE (W) - INTEGRAL LED	1W	NET PRODUCT WEIGHT	0.8KG
CE	YES	OVERALL HEIGHT AS SHOWN	530MM
UKCA	YES	OVERALL WIDTH AS SHOWN	150MM
UL	FOR UL PLEASE ENQUIRE.		

FOR MORE INFORMATION ABOUT THIS PRODUCT:

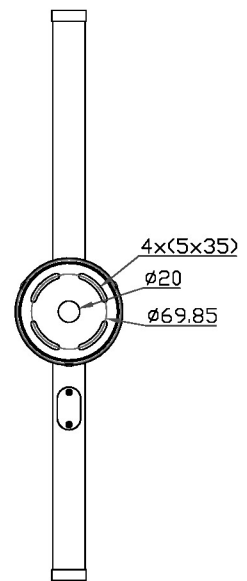
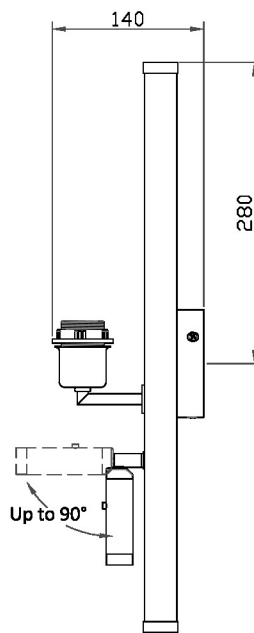
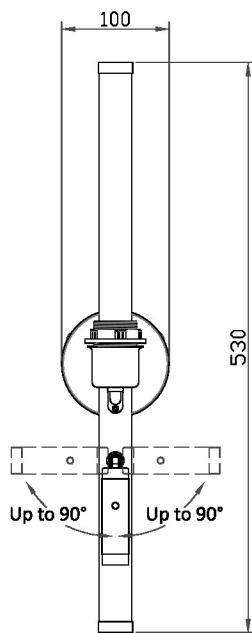
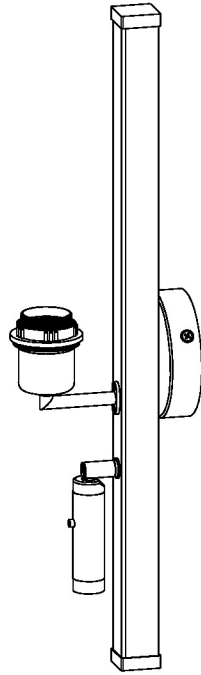
Email: sales@chelsom.co.uk | Call: +44 (0)1253 831400

Chelsom Limited, Heritage House, Clifton Road, Blackpool, Lancashire FY4 4QA, United Kingdom

wordpress-700079-2614039.cloudwaysapps.com

— CHELSOM —

EST. 1947



AB/24/W1/LED

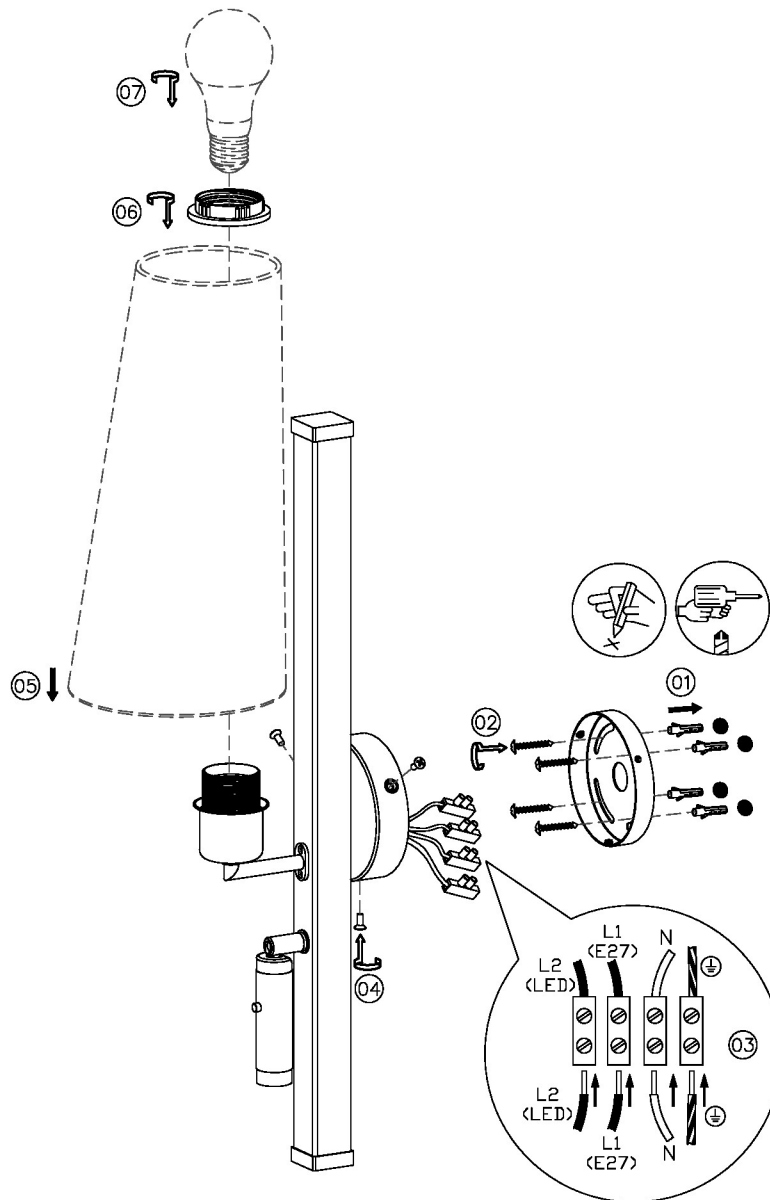
Revision A

www.chelsom.co.uk

— CHELSOM —

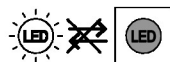
EST. 1947

FOLLOW THE NUMBERED ASSEMBLY SEQUENCE

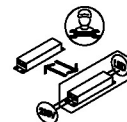


SLR Information

This product contains a light source
of Energy Efficiency Class E
Regulation 2021 No. 1095



Non-replaceable
light source



Control gear
replaceable by
qualified person

www.chelsom.co.uk