



#### FEATURES

HEAVY STONE BACKPLATE SITS WITHIN CURVED METAL SURROUND AND GLASS GLOBES ARE SECURED WITH THREADED METAL RINGS TO ENSURE SAFETY AND DURABILITY. CAN BE FITTED AS UP OR DOWN LIGHT. SUPPLIED FLAT-PACKED TO REDUCE PACKAGING VOLUME AND CARBON FOOTPRINT.

#### MATERIAL

STEEL, STONE AND GLASS

#### FINISH

BRUSHED BRASS (BRB) WITH NATURAL STONE AND MATT OPAL GLASS

#### RECOMMENDED LAMP

2 X E14 4.5W LED 2700K

#### CERTIFICATIONS

CE UKCA UL IP20

#### DIMENSIONS



## FULL TECHNICAL SPECIFICATION

MATERIAL	STEEL, STONE AND GLASS	DIMMING TYPE	PHASE
FINISH	BRUSHED BRASS (BRB) WITH NATURAL STONE AND MATT OPAL GLASS	INSULATION RATING	CLASS I
LAMPHOLDER TYPE	E14	IP RATING	IP20
RECOMMENDED LAMP	2 X E14 4.5W LED 2700K	PROJECTION	185MM
MAX WATTAGE (RETROFIT)	30W	BACKPLATE DIMENSIONS	110MM DIAMETER
CE	YES	NET PRODUCT WEIGHT	1.9KG
UKCA	YES	OVERALL HEIGHT AS SHOWN	250MM
UL	YES	OVERALL WIDTH AS SHOWN	380MM
DIMMABLE AS STANDARD?	YES		

### FOR MORE INFORMATION ABOUT THIS PRODUCT:

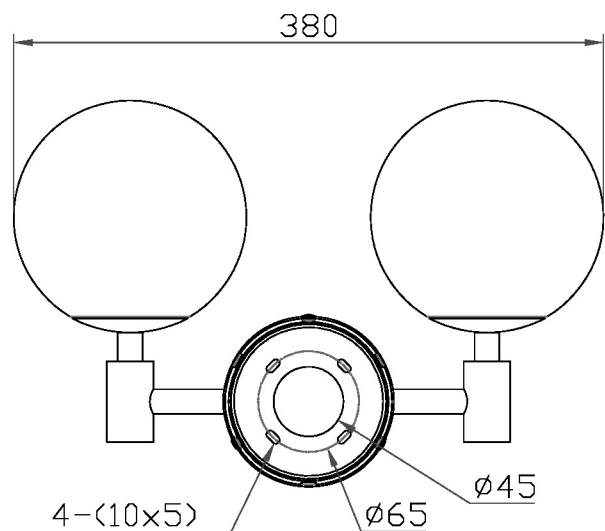
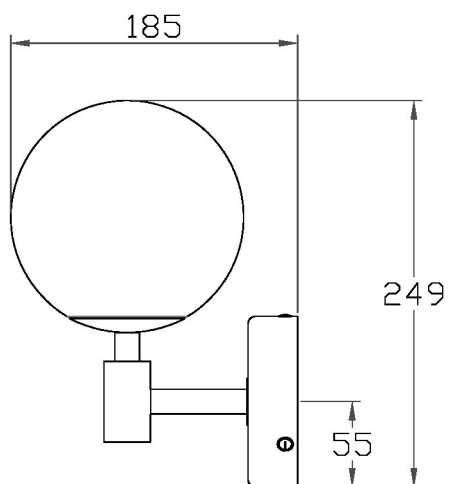
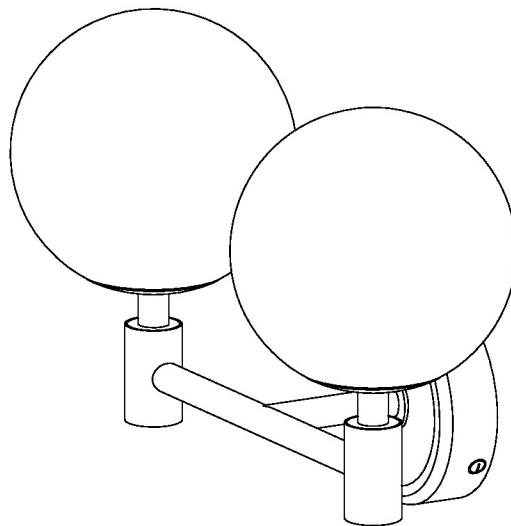
Email: [sales@chelsom.co.uk](mailto:sales@chelsom.co.uk) | Call: +44 (0)1253 831400

Chelsom Limited, Heritage House, Clifton Road, Blackpool, Lancashire FY4 4QA, United Kingdom

[wordpress-700079-2614039.cloudwaysapps.com](https://wordpress-700079-2614039.cloudwaysapps.com)

# — CHELSOM —

EST. 1947



# — CHELSOM —

EST. 1947

FOLLOW THE NUMBERED ASSEMBLY SEQUENCE

