



FEATURES

ADJUSTABLE SLIM HEAD WITH FRONT BAFFLE TO PREVENT GLARE. WARM WHITE INTEGRAL LED WITH FROSTED DIFFUSER FOR GOOD LIGHT OUTPUT. DIMMING OPTIONS AVAILABLE FOR MINIMUM ORDER QUANTITIES.

MATERIAL

STEEL WITH ACRYLIC DIFFUSER

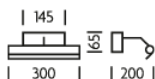
FINISH

BLACK BRONZE (BB)

CERTIFICATIONS

CE UK CA IP20

DIMENSIONS



FULL TECHNICAL SPECIFICATION

MATERIAL	STEEL WITH ACRYLIC DIFFUSER	DIMMABLE AS STANDARD?	BY REQUEST ONLY
FINISH	BLACK BRONZE (BB)	INSULATION RATING	CLASS I
LAMPHOLDER TYPE	INTEGRAL LED	IP RATING	IP20
INTEGRAL LIGHT SOURCE	LED 6W 2700K	WIDTH	300
COLOUR TEMPERATURE	2700K	HEIGHT	63
WATTAGE (W) - INTEGRAL LED	6W	PROJECTION	200MM
CE	YES	BACKPLATE DIMENSIONS	65 X 145MM
UKCA	YES	NET PRODUCT WEIGHT	1.2KG
UL	FOR UL PLEASE ENQUIRE.	OVERALL HEIGHT AS SHOWN	65MM
DRIVER LOCATION	INTEGRAL	OVERALL WIDTH AS SHOWN	300MM

FOR MORE INFORMATION ABOUT THIS PRODUCT:

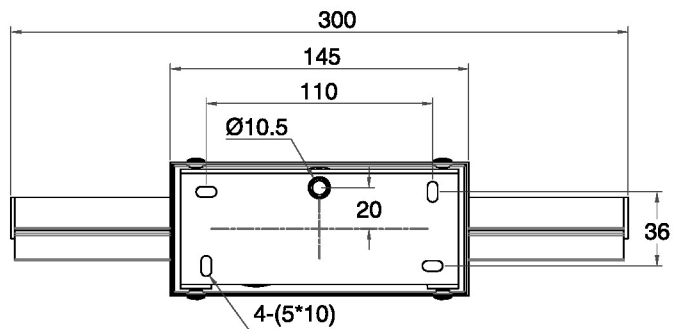
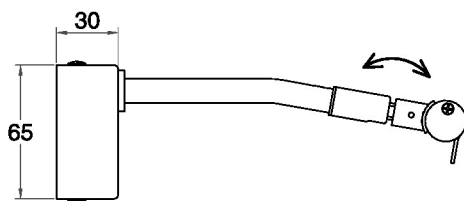
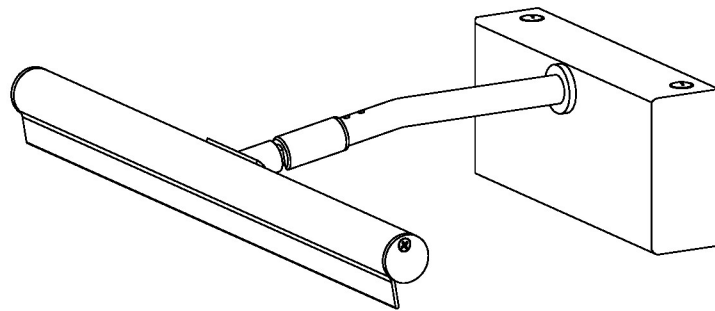
Email: sales@chelsom.co.uk | Call: +44 (0)1253 831400

Chelsom Limited, Heritage House, Clifton Road, Blackpool, Lancashire FY4 4QA, United Kingdom

wordpress-700079-2614039.cloudwaysapps.com

— CHELSOM —

EST. 1947



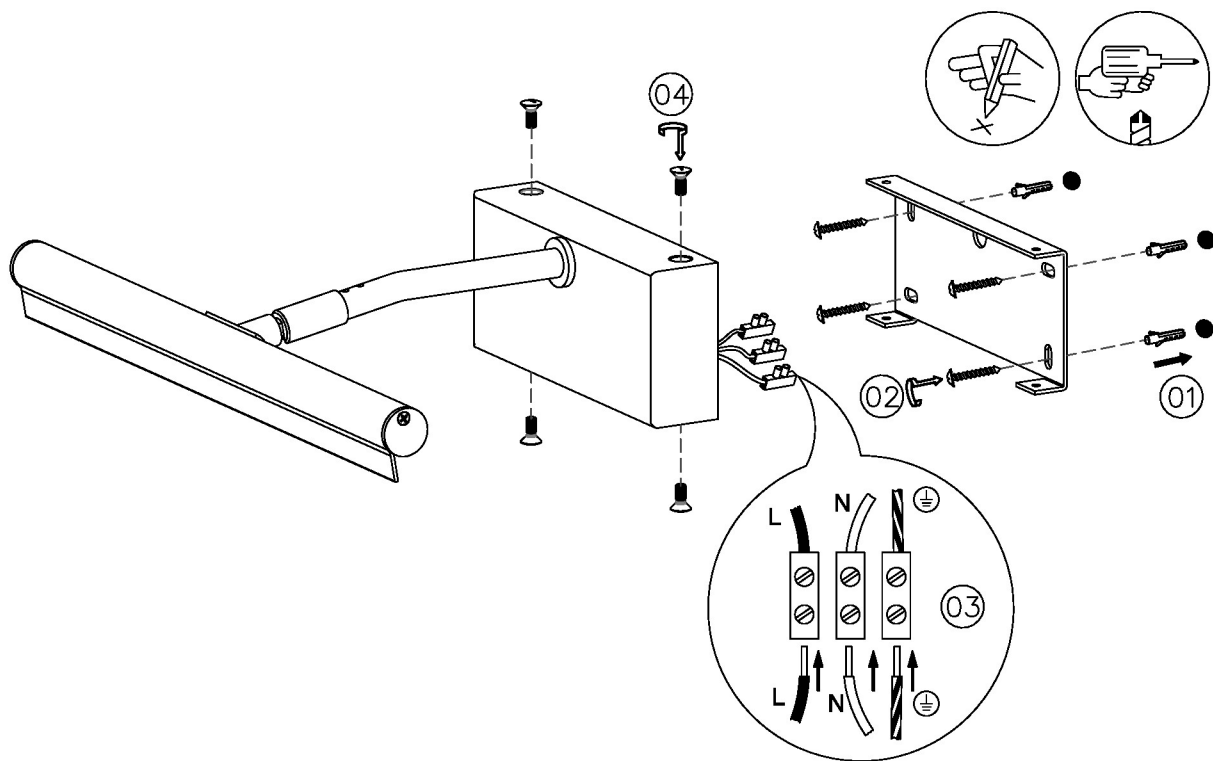
PL/6/300

Revision A

— CHELSOM —

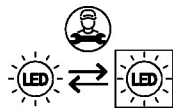
EST. 1947

FOLLOW THE NUMBERED ASSEMBLY SEQUENCE

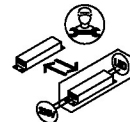


SLR Information

This product contains a light source
of Energy Efficiency Class E
Regulation 2021 No. 1095



LED light source
replaceable by
qualified person



Control gear
replaceable by
qualified person

www.chelsom.co.uk