



#### FEATURES

HAS ADJUSTABLE SWIVELLING HEAD AND ARM MOVES LEFT-RIGHT.

#### MATERIAL

STEEL

#### FINISH

POLISHED CHROME (C)

#### RECOMMENDED LAMP

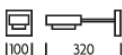
1 X GX53 4.9W LED 2700K

#### CERTIFICATIONS

CE UK UL ± IP20

studio<sup>c</sup>

#### DIMENSIONS



## FULL TECHNICAL SPECIFICATION

MATERIAL	STEEL	INSULATION RATING	CLASS I
FINISH	POLISHED CHROME (C)	IP RATING	IP20
LAMPHOLDER TYPE	GX53	WIDTH	100
RECOMMENDED LAMP	1 X GX53 4.9W LED 2700K	HEIGHT	100
MAX WATTAGE (RETROFIT)	15W	PROJECTION	320MM
CE	YES	BACKPLATE DIMENSIONS	100 X 100MM
UKCA	YES	NET PRODUCT WEIGHT	2.2KG
UL	YES	OVERALL HEIGHT AS SHOWN	100MM
SWITCH TYPE	ROCKER	OVERALL WIDTH AS SHOWN	100MM
DIMMABLE AS STANDARD?	BY REQUEST ONLY		

### FOR MORE INFORMATION ABOUT THIS PRODUCT:

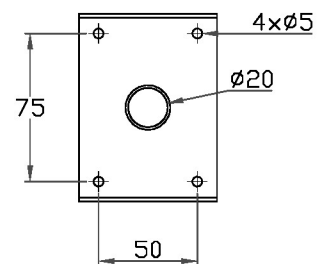
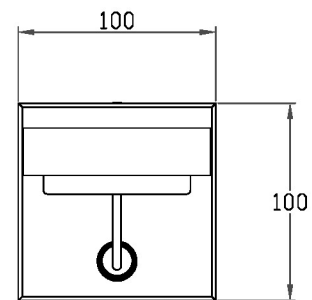
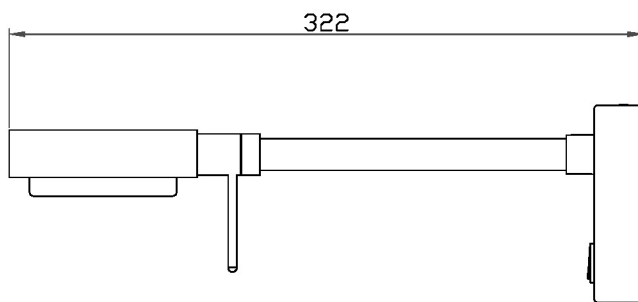
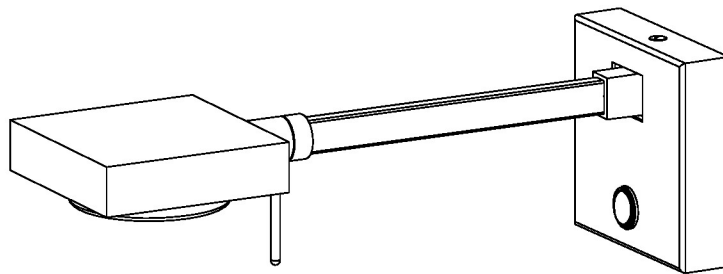
Email: [sales@chelsom.co.uk](mailto:sales@chelsom.co.uk) | Call: +44 (0)1253 831400

Chelsom Limited, Heritage House, Clifton Road, Blackpool, Lancashire FY4 4QA, United Kingdom

[wordpress-700079-2614039.cloudwaysapps.com](https://wordpress-700079-2614039.cloudwaysapps.com)

# — CHELSOM —

EST. 1947



# — CHELSOM —

EST. 1947

FOLLOW THE NUMBERED ASSEMBLY SEQUENCE

