



#### FEATURES

IP44 BATHROOM WALL LIGHT WITH WIPEABLE FABRIC SHADE.

#### MATERIAL

STEEL

#### FINISH

POLISHED CHROME (C)

#### RECOMMENDED LAMP

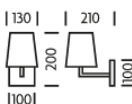
1 X G9 2W LED 3000K

#### CERTIFICATIONS

CE UK CA UL IP44

studio

#### DIMENSIONS



## FULL TECHNICAL SPECIFICATION

MATERIAL	STEEL	INSULATION RATING	CLASS I
FINISH	POLISHED CHROME (C)	IP RATING	IP44
LAMPHOLDER TYPE	G9	BATHROOM ZONE	ZONE 2
RECOMMENDED LAMP	1 X G9 2W LED 3000K	PROJECTION	210MM
MAX WATTAGE (RETROFIT)	15W	BACKPLATE DIMENSIONS	100 X 100MM
CE	YES	NET PRODUCT WEIGHT	0.5KG
UKCA	YES	OVERALL HEIGHT AS SHOWN	200MM
UL	YES	OVERALL WIDTH AS SHOWN	130MM
DIMMABLE AS STANDARD?	BY REQUEST ONLY		

### FOR MORE INFORMATION ABOUT THIS PRODUCT:

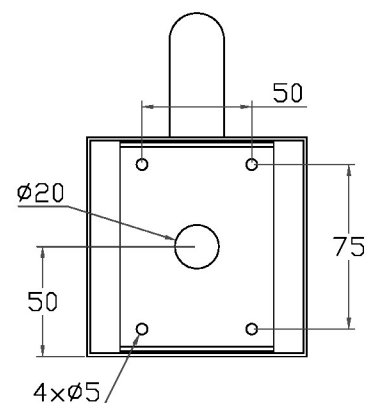
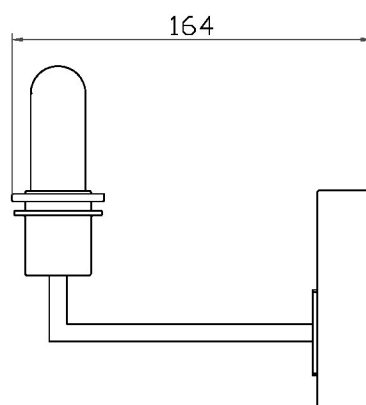
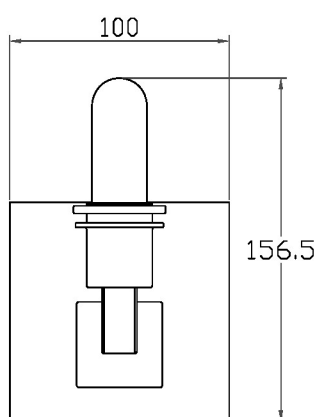
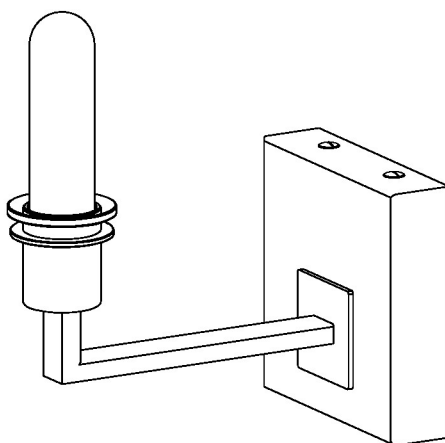
Email: [sales@chelsom.co.uk](mailto:sales@chelsom.co.uk) | Call: +44 (0)1253 831400

Chelsom Limited, Heritage House, Clifton Road, Blackpool, Lancashire FY4 4QA, United Kingdom

[wordpress-700079-2614039.cloudwaysapps.com](https://wordpress-700079-2614039.cloudwaysapps.com)

# — CHELSOM —

EST. 1947



# — CHELSOM —

EST. 1947

FOLLOW THE NUMBERED ASSEMBLY SEQUENCE

