



FEATURES

WALL LIGHT SUITABLE FOR PUBLIC SPACES, CORRIDORS OR GUESTROOM BEDSIDES. EMITS A SOFT LIGHT THROUGH THE OPAL ACRYLIC DIFFUSER.

MATERIAL

STEEL WITH FROSTED POLYCARBONATE

FINISH

BRUSHED NICKEL (BN)

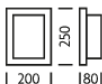
RECOMMENDED LAMP

1 X E27 7W LED 2700K

CERTIFICATIONS

CE UKCA UL ± IP20

DIMENSIONS



FULL TECHNICAL SPECIFICATION

MATERIAL	STEEL WITH FROSTED POLYCARBONATE	INSULATION RATING	CLASS I
FINISH	BRUSHED NICKEL (BN)	IP RATING	IP20
LAMPHOLDER TYPE	E27	WIDTH	200
RECOMMENDED LAMP	1 X E27 7W LED 2700K	HEIGHT	250
MAX WATTAGE (RETROFIT)	30W	PROJECTION	80MM
CE	YES	BACKPLATE DIMENSIONS	205 X 155MM
UKCA	YES	NET PRODUCT WEIGHT	2.2KG
UL	YES	OVERALL HEIGHT AS SHOWN	250MM
DIMMABLE AS STANDARD?	YES	OVERALL WIDTH AS SHOWN	200MM
DIMMING TYPE	PHASE		

FOR MORE INFORMATION ABOUT THIS PRODUCT:

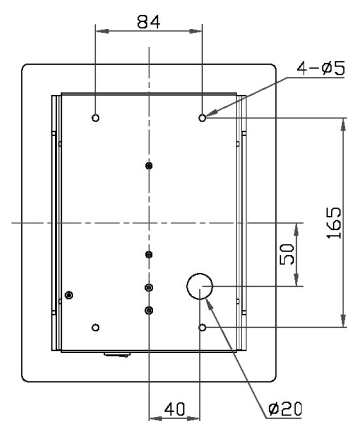
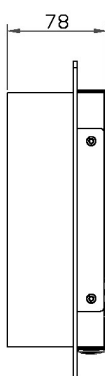
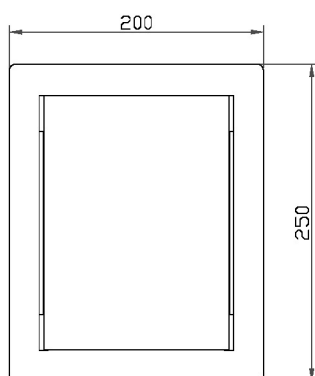
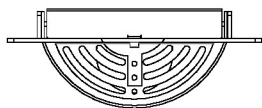
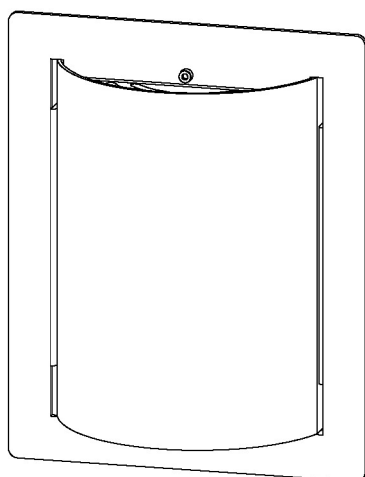
Email: sales@chelsom.co.uk | Call: +44 (0)1253 831400

Chelsom Limited, Heritage House, Clifton Road, Blackpool, Lancashire FY4 4QA, United Kingdom

wordpress-700079-2614039.cloudwaysapps.com

— CHELSOM —

EST. 1947



— CHELSOM —

EST. 1947

FOLLOW THE NUMBERED ASSEMBLY SEQUENCE

