



FEATURES

A WARM WHITE LED HEADBOARD READING LIGHT IS HOUSED WITHIN A RECTANGULAR HEAD THAT SWIVELS 90° LEFT, RIGHT OR FORWARD AND 'DOCKS' INTO A SEMI RECESSED BACKPLATE, WHICH CAN BE VERTICALLY OR HORIZONTALLY MOUNTED. HAS A COLOUR CO-ORDINATED METAL PUSH SWITCH ON THE BACKPLATE.

MATERIAL

STEEL AND ALUMINIUM

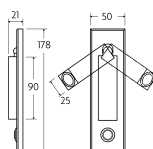
FINISH

BLACK BRONZE (BB)

CERTIFICATIONS

CE UK CA UL IP20

DIMENSIONS



FULL TECHNICAL SPECIFICATION

| | | | |
|-----------------------------------|---------------------|--------------------------------|-----------------|
| MATERIAL | STEEL AND ALUMINIUM | DIMMABLE AS STANDARD? | BY REQUEST ONLY |
| FINISH | BLACK BRONZE (BB) | INSULATION RATING | CLASS I |
| LAMPHOLDER TYPE | INTEGRAL LED | IP RATING | IP20 |
| INTEGRAL LIGHT SOURCE | LED 1W 2700K | WIDTH | 50 |
| COLOUR TEMPERATURE | 2700K | HEIGHT | 178 |
| WATTAGE (W) - INTEGRAL LED | 1W | PROJECTION | 108MM |
| CE | YES | BACKPLATE DIMENSIONS | 50 X 178MM |
| UKCA | YES | CUTOUT DIMENSIONS | 32 X 150MM |
| UL | YES | NET PRODUCT WEIGHT | 0.35KG |
| DRIVER LOCATION | INTEGRAL | OVERALL HEIGHT AS SHOWN | 50MM |
| SWITCH TYPE | PUSH | OVERALL WIDTH AS SHOWN | 178MM |

FOR MORE INFORMATION ABOUT THIS PRODUCT:

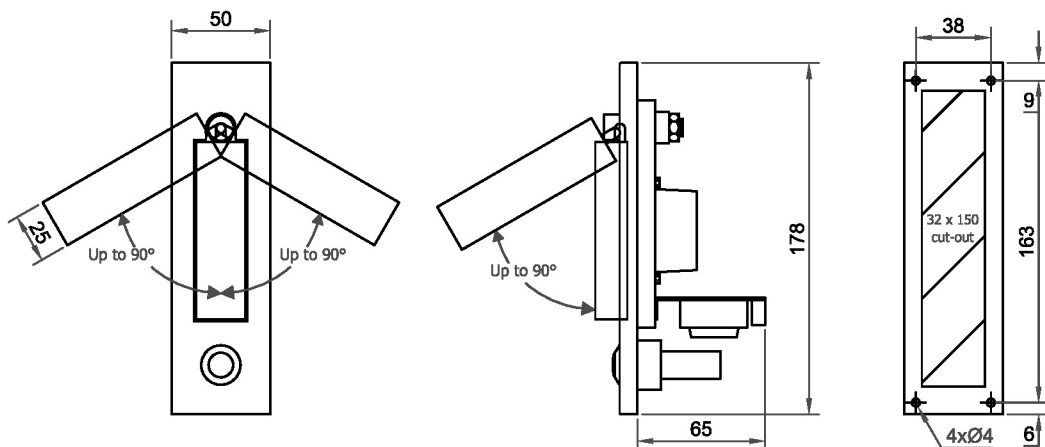
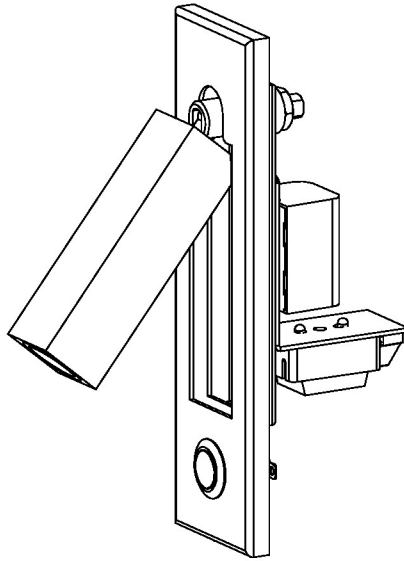
Email: sales@chelsom.co.uk | Call: +44 (0)1253 831400

Chelsom Limited, Heritage House, Clifton Road, Blackpool, Lancashire FY4 4QA, United Kingdom

wordpress-700079-2614039.cloudwaysapps.com

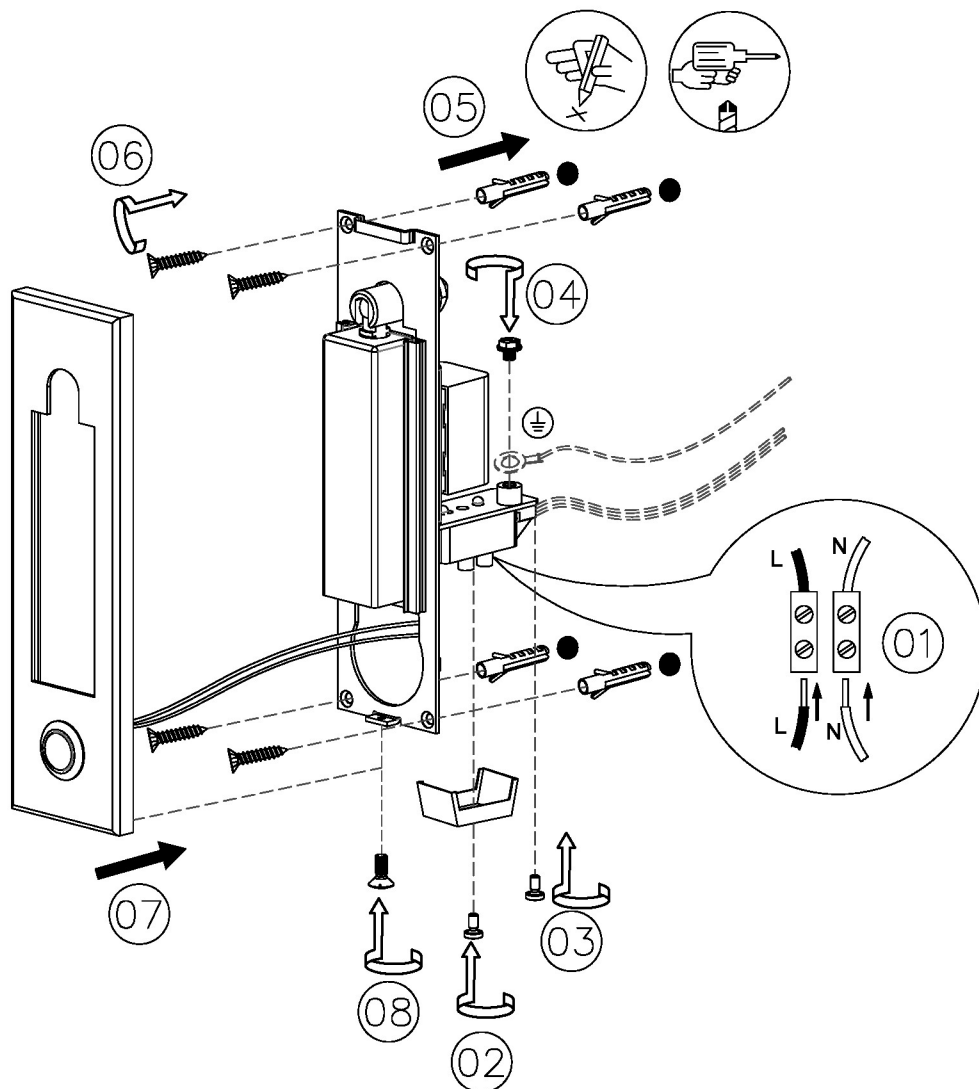
— CHELSOM —

EST. 1947



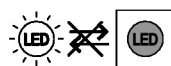
— CHELSOM —

EST. 1947

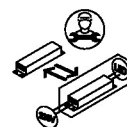


SLR Information

This product contains a light source
of Energy Efficiency Class E
Regulation 2021 No. 1095



Non-replaceable
light source



Control gear
replaceable by
qualified person

www.chelsom.co.uk