



FEATURES

SHADE SHAPE CREATES STRIKING LIGHT EFFECT UP AND DOWN PLUS REFLECTED LIGHT. SHADE SHOWN IS BLACK CHINTZ WITH BRUSHED COPPER LINING (BL/COP). NATURAL (NAT) ALSO AVAILABLE. OTHER SHADE FABRIC OPTIONS TO .

MATERIAL

STEEL METALWORK WITH VARIOUS FABRIC OPTIONS

FINISH

SATIN BLACK (BL) METALWORK WITH SHADE IN BLACK WITH BRUSHED COPPER LINING

RECOMMENDED LAMP

2 X E27 7W LED 2700K

CERTIFICATIONS

CE UK CA UL ± IP20

DIMENSIONS



FULL TECHNICAL SPECIFICATION

MATERIAL	STEEL METALWORK WITH VARIOUS FABRIC OPTIONS	DIMMING TYPE	PHASE
FINISH	SATIN BLACK (BL) METALWORK WITH SHADE IN BLACK WITH BRUSHED COPPER LINING	INSULATION RATING	CLASS I
LAMPHOLDER TYPE	E27	IP RATING	IP20
RECOMMENDED LAMP	2 X E27 7W LED 2700K	PROJECTION	145MM
MAX WATTAGE (RETROFIT)	30W	BACKPLATE DIMENSIONS	80 X 225MM
CE	YES	NET PRODUCT WEIGHT	0.85KG
UKCA	YES	OVERALL HEIGHT AS SHOWN	275MM
UL	YES	OVERALL WIDTH AS SHOWN	285MM
DIMMABLE AS STANDARD?	YES		

FOR MORE INFORMATION ABOUT THIS PRODUCT:

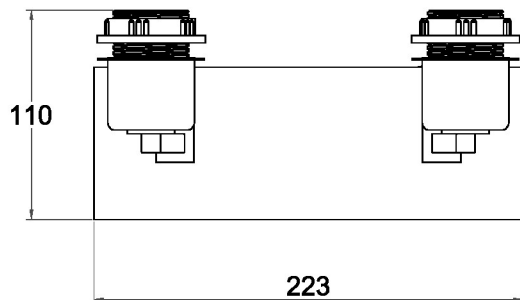
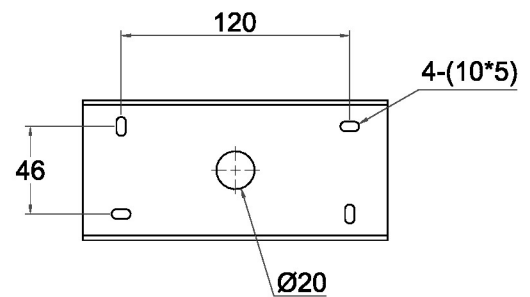
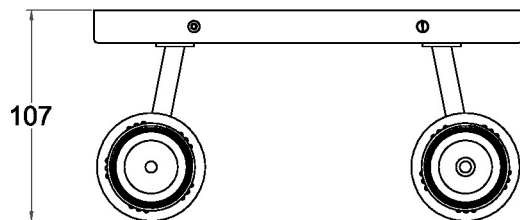
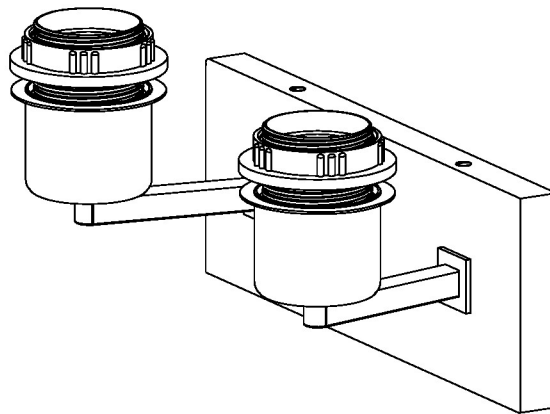
Email: sales@chelsom.co.uk | Call: +44 (0)1253 831400

Chelsom Limited, Heritage House, Clifton Road, Blackpool, Lancashire FY4 4QA, United Kingdom

wordpress-700079-2614039.cloudwaysapps.com

— CHELSOM —

EST. 1947



— CHELSOM —

EST. 1947

FOLLOW THE NUMBERED ASSEMBLY SEQUENCE

