



#### FEATURES

AN OPAL GLASS GLOBE IS ENCASED WITHIN A GOLDEN BRONZE SCONCE WHICH INTERLOCKS WITH A SOLID WOODEN EBONY RECTANGULAR SECTION. WALL LIGHT HAS CONCEALED WALL FIXINGS. SUPPLIED FLAT-PACKED TO REDUCE PACKAGING VOLUME AND CARBON FOOTPRINT.

#### MATERIAL

WOOD, STEEL AND GLASS

#### FINISH

EBONY WITH GOLDEN BRONZE (EB/GB) AND MATT OPAL GLASS

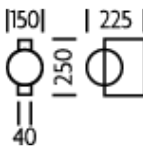
#### RECOMMENDED LAMP

1 X E14 4.5W LED 2700K

#### CERTIFICATIONS

CE UK CA UL  $\pm$  IP20

#### DIMENSIONS



## FULL TECHNICAL SPECIFICATION

MATERIAL	WOOD, STEEL AND GLASS	DIMMING TYPE	PHASE
FINISH	EBONY WITH GOLDEN BRONZE (EB/GB) AND MATT OPAL GLASS	INSULATION RATING	CLASS I
LAMPHOLDER TYPE	E14	IP RATING	IP20
RECOMMENDED LAMP	1 X E14 4.5W LED 2700K	PROJECTION	225MM
MAX WATTAGE (RETROFIT)	30W	BACKPLATE DIMENSIONS	250 X 40MM
CE	YES	NET PRODUCT WEIGHT	1.4KG
UKCA	YES	OVERALL HEIGHT AS SHOWN	250MM
UL	YES	OVERALL WIDTH AS SHOWN	150MM
DIMMABLE AS STANDARD?	YES		

### FOR MORE INFORMATION ABOUT THIS PRODUCT:

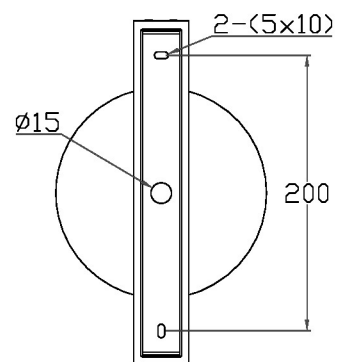
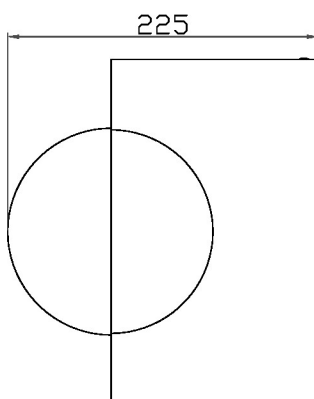
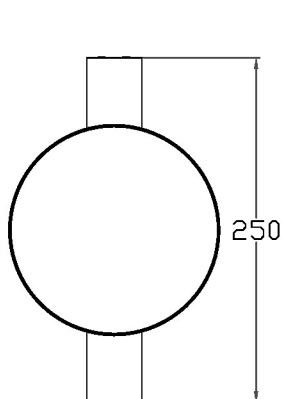
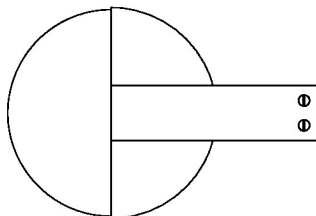
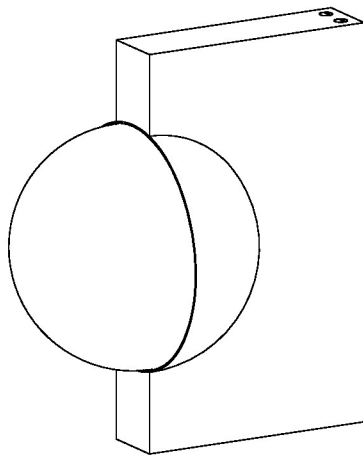
Email: [sales@chelsom.co.uk](mailto:sales@chelsom.co.uk) | Call: +44 (0)1253 831400

Chelsom Limited, Heritage House, Clifton Road, Blackpool, Lancashire FY4 4QA, United Kingdom

[wordpress-700079-2614039.cloudwaysapps.com](https://wordpress-700079-2614039.cloudwaysapps.com)

# — CHELSOM —

EST. 1947



# — CHELSOM —

EST. 1947

FOLLOW THE NUMBERED ASSEMBLY SEQUENCE

