



#### FEATURES

THIS SHAVING MIRROR IS FULLY ADJUSTABLE AND FEATURES A 3X MAGNIFYING MIRROR WITH LED ILLUMINATION FROM A FROSTED PERIPHERY. BACKPLATE HAS A COLOUR-MATCHED METAL PUSH SWITCH.

#### MATERIAL

STEEL WITH MİRRORED GLASS

#### FINISH

POLISHED CHROME (C)

#### CERTIFICATIONS

CE UK CA IP44

#### DIMENSIONS

| 236 | | 277 |

## FULL TECHNICAL SPECIFICATION

MATERIAL	STEEL WITH MİRRORED GLASS	SWITCH TYPE	PUSH
FINISH	POLISHED CHROME (C)	DIMMABLE AS STANDARD?	BY REQUEST ONLY
LAMPHOLDER TYPE	INTEGRAL LED	INSULATION RATING	CLASS I
INTEGRAL LIGHT SOURCE	LED 10W 3000K	IP RATING	IP44
COLOUR TEMPERATURE	3000K	BATHROOM ZONE	ZONE 2
WATTAGE (W) - INTEGRAL LED	10W	PROJECTION	277MM
CE	YES	BACKPLATE DIMENSIONS	110MM DIAMETER
UKCA	YES	NET PRODUCT WEIGHT	1.6KG
UL	FOR UL PLEASE ENQUIRE.	OVERALL HEIGHT AS SHOWN	236MM
DRIVER LOCATION	INTEGRAL	OVERALL WIDTH AS SHOWN	236MM

### FOR MORE INFORMATION ABOUT THIS PRODUCT:

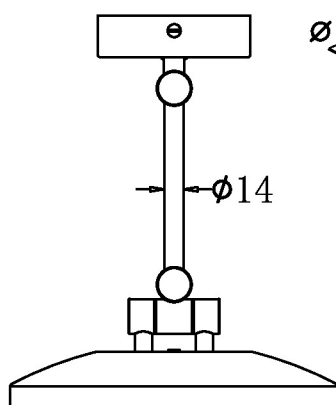
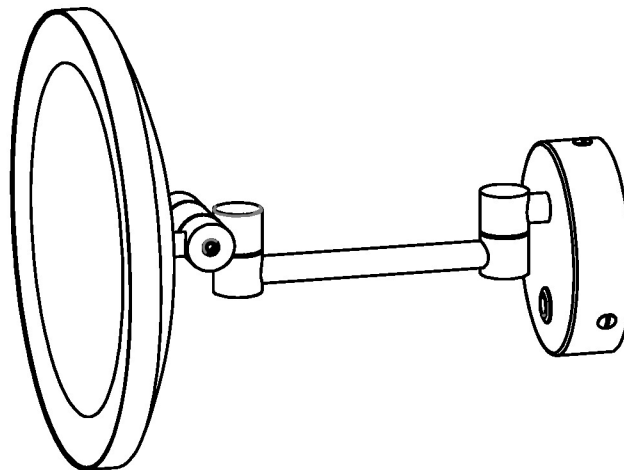
Email: [sales@chelsom.co.uk](mailto:sales@chelsom.co.uk) | Call: +44 (0)1253 831400

Chelsom Limited, Heritage House, Clifton Road, Blackpool, Lancashire FY4 4QA, United Kingdom

[wordpress-700079-2614039.cloudwaysapps.com](https://wordpress-700079-2614039.cloudwaysapps.com)

# — CHELSOM —

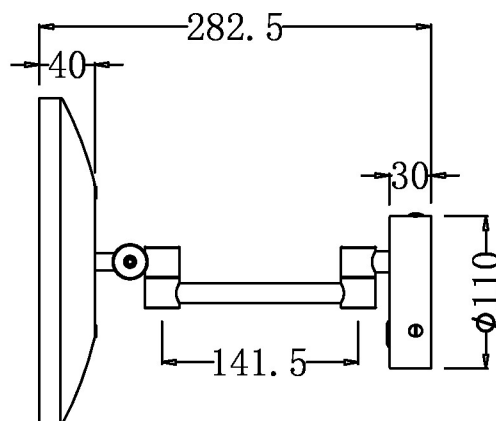
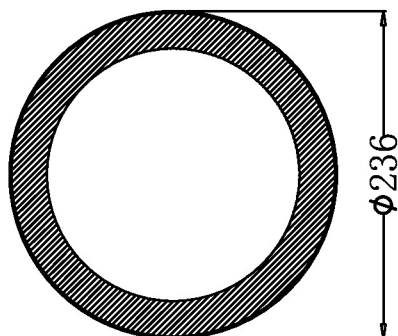
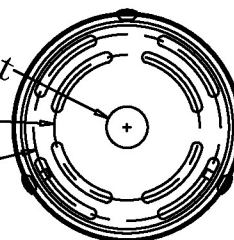
EST. 1947



$\phi 20$  cable exit

$\phi 69.85$

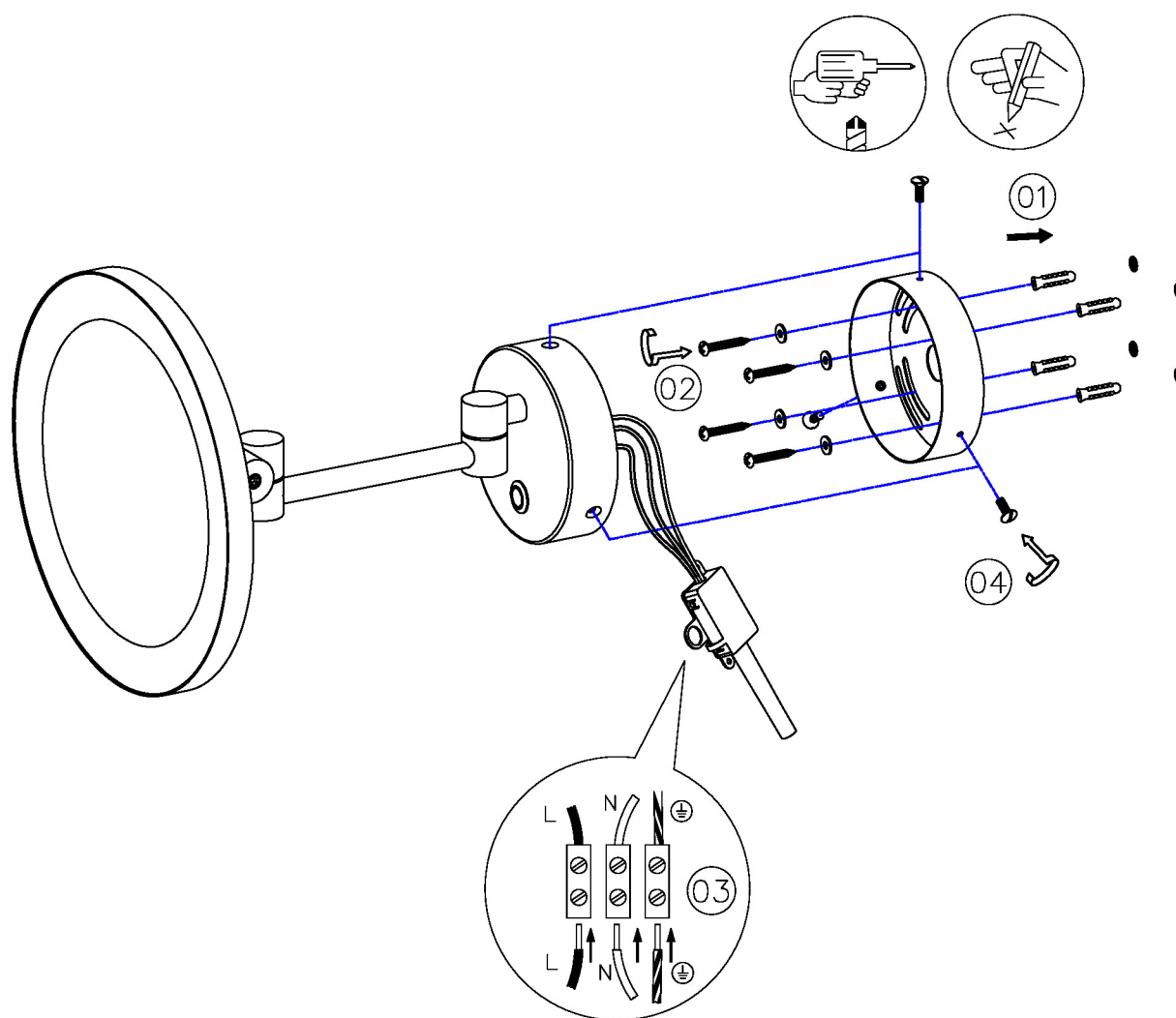
$\phi 88.9$



# — CHELSOM —

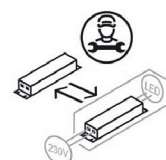
EST. 1947

**FOLLOW THE NUMBERED ASSEMBLY SEQUENCE**



## SLR Information

This product contains a light source  
of Energy Efficiency Class **F**  
Regulation 2021 No. 1095



Control gear  
replaceable by  
qualified person

[www.chelsom.co.uk](http://www.chelsom.co.uk)