

FEATURES

SLIM BRUSHED BRASS DISC CONCEALS DIMMABLE WARM LED LIGHT WHICH PROJECTS INTO THE THICK SCULPTURED GLASS DRAMATICALLY ILLUMINATING THE MOULDED PATTERN AND THE OUTER PERIMETER.

MATERIAL

STEEL AND GLASS

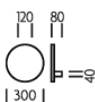
FINISH

BRUSHED BRASS WITH CLEAR SCULPTURE GLASS

CERTIFICATIONS

CE UK CA IP20

DIMENSIONS



FULL TECHNICAL SPECIFICATION

MATERIAL	STEEL AND GLASS	DIMMABLE AS STANDARD?	YES
FINISH	BRUSHED BRASS WITH CLEAR SCULPTURE GLASS	DIMMING TYPE	1-10V
LAMPHOLDER TYPE	INTEGRAL LED	INSULATION RATING	CLASS I
INTEGRAL LIGHT SOURCE	LED 6W 2700K	IP RATING	IP20
COLOUR TEMPERATURE	2700K	PROJECTION	80MM
WATTAGE (W) - INTEGRAL LED	6W	BACKPLATE DIMENSIONS	40 X 120MM
CE	YES	NET PRODUCT WEIGHT	3.1KG
UKCA	YES	OVERALL HEIGHT AS SHOWN	300MM
UL	FOR UL PLEASE ENQUIRE.	OVERALL WIDTH AS SHOWN	300MM
DRIVER LOCATION	INTEGRAL		

FOR MORE INFORMATION ABOUT THIS PRODUCT:

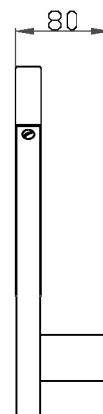
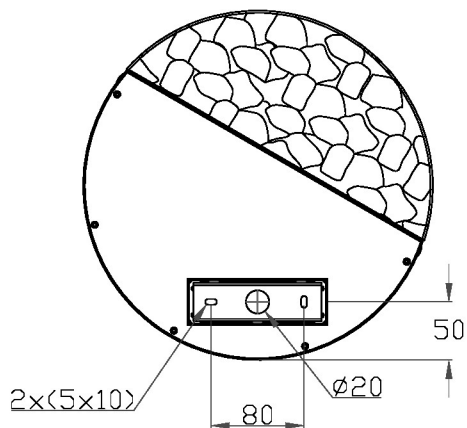
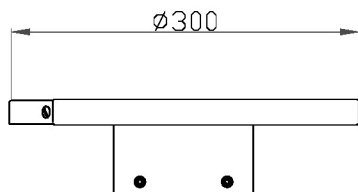
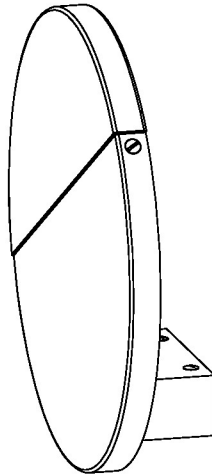
Email: sales@chelsom.co.uk | Call: +44 (0)1253 831400

Chelsom Limited, Heritage House, Clifton Road, Blackpool, Lancashire FY4 4QA, United Kingdom

wordpress-700079-2614039.cloudwaysapps.com

— CHELSOM —

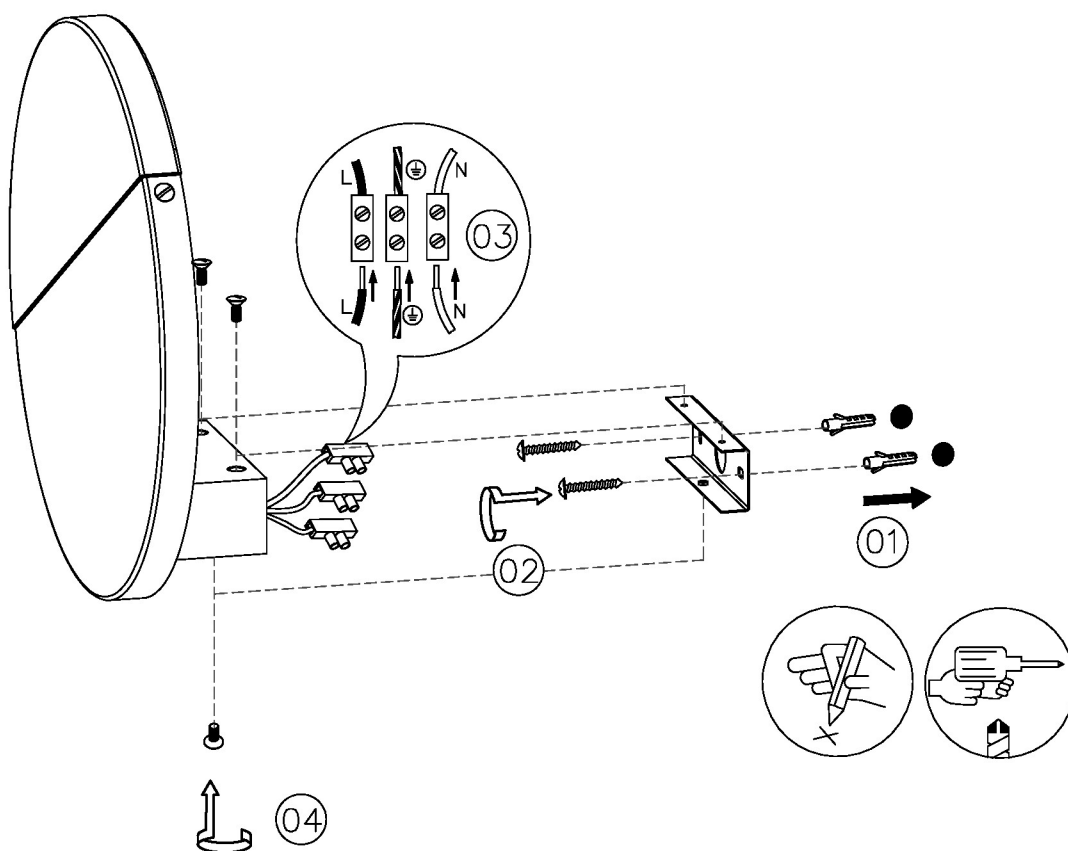
EST. 1947



— CHELSOM —

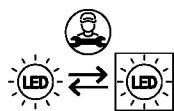
EST. 1947

FOLLOW THE NUMBERED ASSEMBLY SEQUENCE

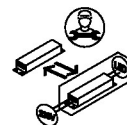


SLR Information

This product contains a light source
of Energy Efficiency Class E
Regulation 2021 No. 1095



LED light source
replaceable by
qualified person



Control gear
replaceable by
qualified person

www.chelsom.co.uk