



FEATURES

SEMI RECESSED HEADBOARD READING LIGHT WITH KNURLED CYLINDAR HEAD. DOCKING SWITCH OPERATION.

MATERIAL

STEEL AND ALUMINIUM

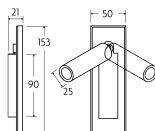
FINISH

SATIN BLACK (BL)

CERTIFICATIONS

CE UK CA UL IP20

DIMENSIONS



FULL TECHNICAL SPECIFICATION

MATERIAL	STEEL AND ALUMINIUM	SWITCH TYPE	DOCKING SWITCH
FINISH	SATIN BLACK (BL)	DIMMABLE AS STANDARD?	BY REQUEST ONLY
LAMPHOLDER TYPE	INTEGRAL LED	INSULATION RATING	CLASS I
INTEGRAL LIGHT SOURCE	LED 1W 2700K	IP RATING	IP20
COLOUR TEMPERATURE	2700K	PROJECTION	108MM
WATTAGE (W) - INTEGRAL LED	1W	BACKPLATE DIMENSIONS	50 X 153MM
CE	YES	CUTOUT DIMENSIONS	32 X 120MM
UKCA	YES	NET PRODUCT WEIGHT	0.35KG
UL	YES	OVERALL HEIGHT AS SHOWN	50MM
DRIVER LOCATION	INTEGRAL	OVERALL WIDTH AS SHOWN	153MM

FOR MORE INFORMATION ABOUT THIS PRODUCT:

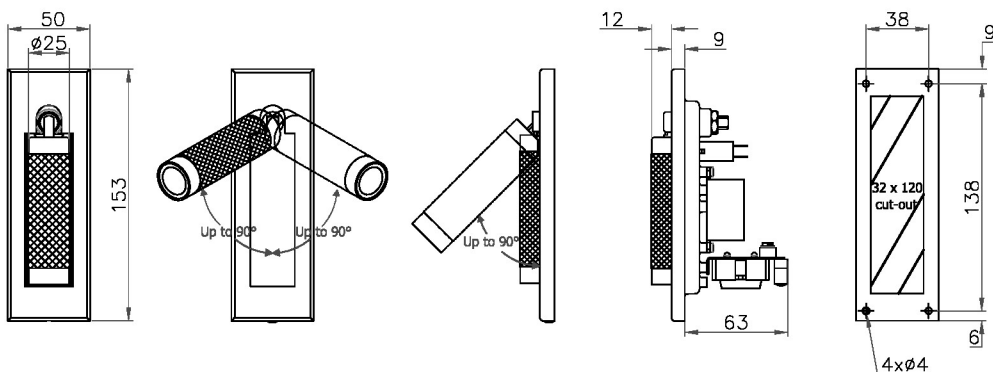
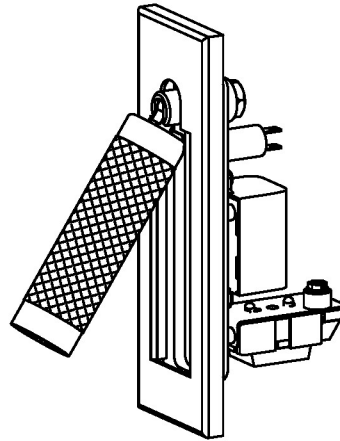
Email: sales@chelsom.co.uk | Call: +44 (0)1253 831400

Chelsom Limited, Heritage House, Clifton Road, Blackpool, Lancashire FY4 4QA, United Kingdom

wordpress-700079-2614039.cloudwaysapps.com

— CHELSOM —

EST. 1947



LED/5/2/KNURL

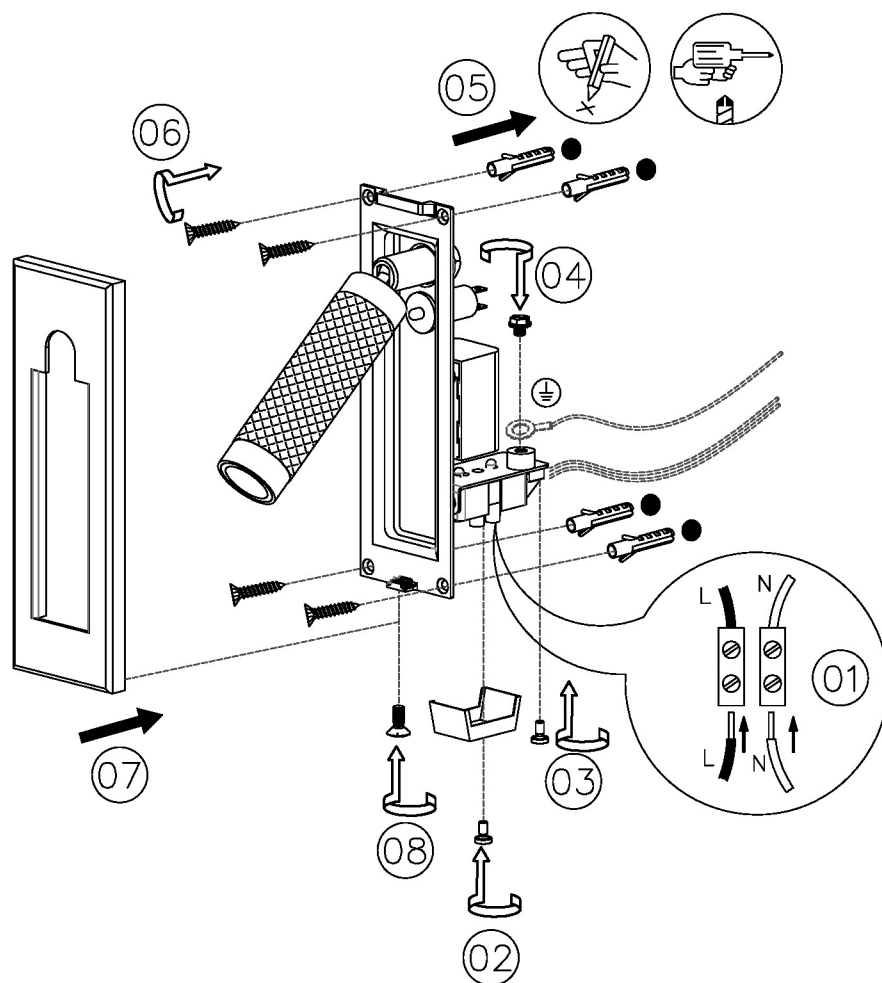
Revision A

www.chelsom.co.uk

— CHELSOM —

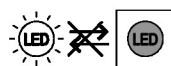
EST. 1947

FOLLOW THE NUMBERED ASSEMBLY SEQUENCE

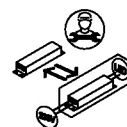


SLR Information

This product contains a light source
of Energy Efficiency Class E
Regulation 2021 No. 1095



Non-replaceable
light source



Control gear
replaceable by
qualified person

www.chelsom.co.uk