



#### FEATURES

STRIKING OVERSCALED CYLINDRICAL HEAD GIVES AMBIENT ROOM LIGHT THROUGH THE MATT OPAL GLASS TOP DOME AND DIRECTIONAL TASK LIGHT FROM BELOW. HEAD SWIVELS RIGHT/LEFT WITH A MECHANICAL STOP TO PREVENT OVER ROTATION.

#### MATERIAL

STEEL AND GLASS WITH ACRYLIC DIFFUSER

#### FINISH

BRUSHED BRASS (BRB)

#### CERTIFICATIONS

CE UK CA IP20

#### DIMENSIONS



## FULL TECHNICAL SPECIFICATION

MATERIAL	STEEL AND GLASS WITH ACRYLIC DIFFUSER	DRIVER LOCATION	INTEGRAL
FINISH	BRUSHED BRASS (BRB)	DIMMABLE AS STANDARD?	BY REQUEST ONLY
LAMPHOLDER TYPE	INTEGRAL LED	INSULATION RATING	CLASS I
INTEGRAL LIGHT SOURCE	2 X LED 3W 2700K	IP RATING	IP20
COLOUR TEMPERATURE	2700K	PROJECTION	165MM
WATTAGE (W) - INTEGRAL LED	6W	BACKPLATE DIMENSIONS	100MM DIAMETER
CE	YES	NET PRODUCT WEIGHT	1.75KG
UKCA	YES	OVERALL HEIGHT AS SHOWN	450MM
UL	FOR UL PLEASE ENQUIRE.	OVERALL WIDTH AS SHOWN	100MM

### FOR MORE INFORMATION ABOUT THIS PRODUCT:

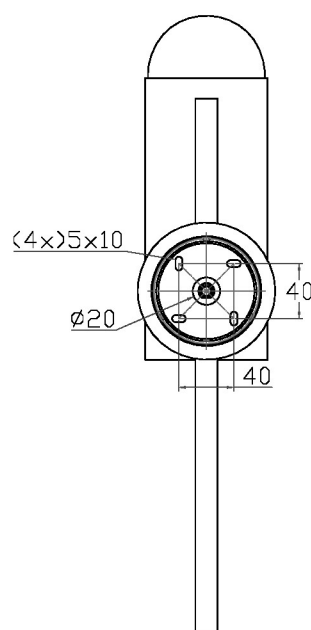
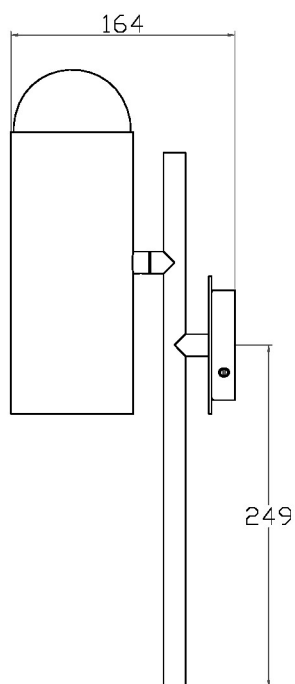
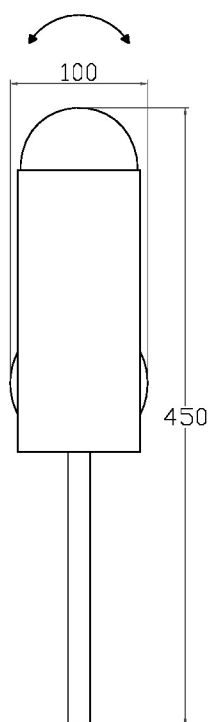
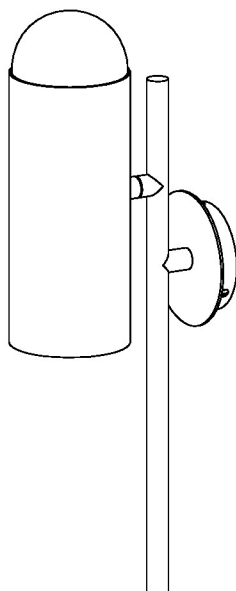
Email: [sales@chelsom.co.uk](mailto:sales@chelsom.co.uk) | Call: +44 (0)1253 831400

Chelsom Limited, Heritage House, Clifton Road, Blackpool, Lancashire FY4 4QA, United Kingdom

[wordpress-700079-2614039.cloudwaysapps.com](https://wordpress-700079-2614039.cloudwaysapps.com)

# — CHELSOM —

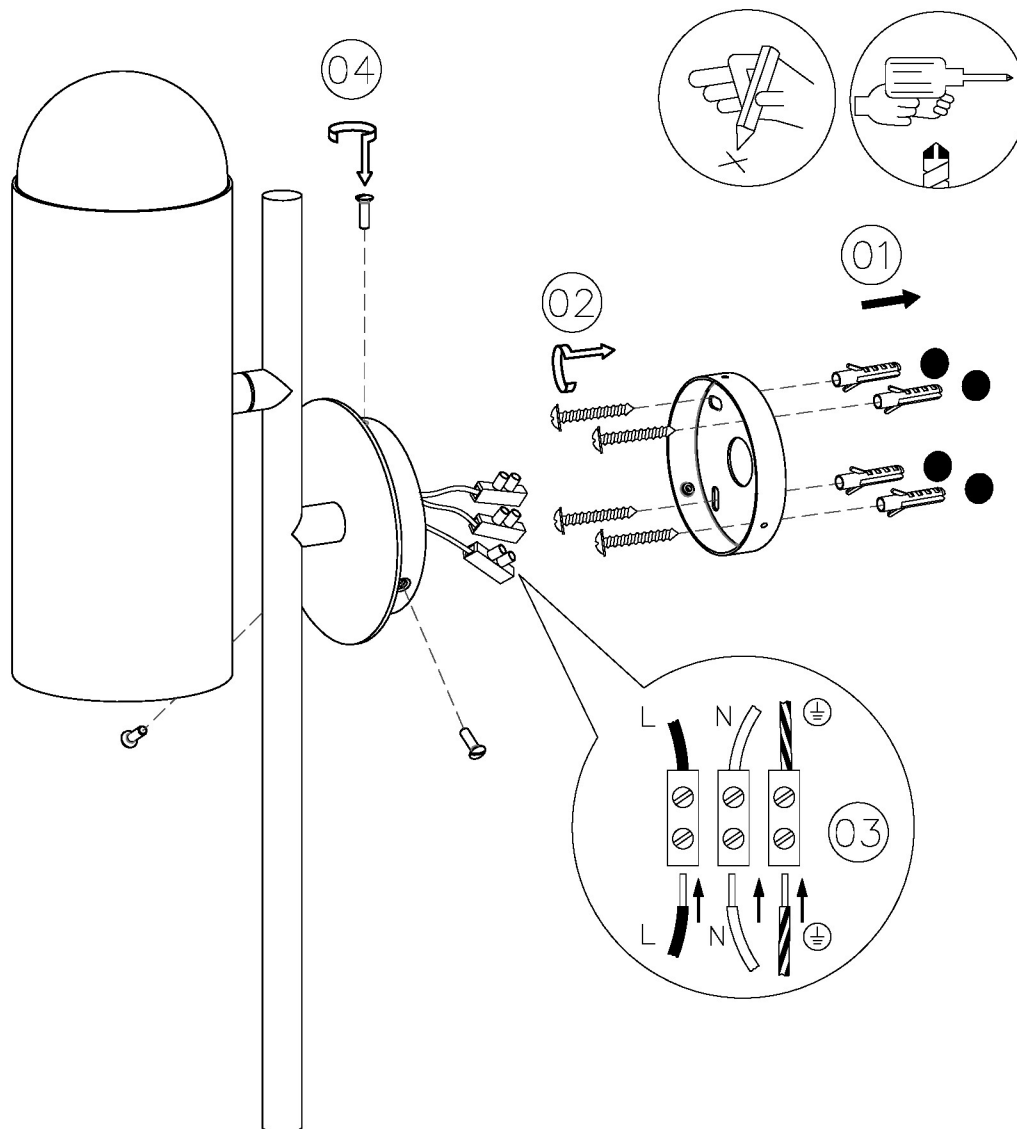
EST. 1947



# — CHELSOM —

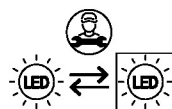
EST. 1947

FOLLOW THE NUMBERED ASSEMBLY SEQUENCE

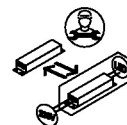


## SLR Information

This product contains a light source of Energy Efficiency Class E Regulation 2021 No. 1095



LED light source replaceable by qualified person



Control gear replaceable by qualified person

[www.chelsom.co.uk](http://www.chelsom.co.uk)