



FEATURES

A WALL LIGHT FEATURING A BEAUTIFUL METAL DOME WHICH NESTLES ON A FAUX ALABASTER INNER DOME. AMBIENT LIGHT IS EMITTED THROUGH THE FAUX ALABASTER WHILST ALSO DIFFUSING A HALO EFFECT ONTO THE WALL. THIS WALL LIGHT IS PERFECT FOR USE IN CORRIDORS AND PUBLIC SPACES AS WELL AS GUESTROOMS. SUPPLIED FLAT-PACKED TO REDUCE PACKAGING VOLUME AND CARBON FOOTPRINT.

MATERIAL

STEEL AND ACRYLIC

FINISH

BLACK BRONZE (BB) WITH FAUX ALABASTER

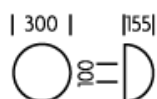
RECOMMENDED LAMP

2 X E27 7W LED 2700K

CERTIFICATIONS

CE UK CA UL IP20

DIMENSIONS



FULL TECHNICAL SPECIFICATION

MATERIAL	STEEL AND ACRYLIC	DIMMING TYPE	PHASE
FINISH	BLACK BRONZE (BB) WITH FAUX ALABASTER	INSULATION RATING	CLASS I
LAMPHOLDER TYPE	E27	IP RATING	IP20
RECOMMENDED LAMP	2 X E27 7W LED 2700K	PROJECTION	155MM
MAX WATTAGE (RETROFIT)	30W	BACKPLATE DIMENSIONS	100MM DIAMETER
CE	YES	NET PRODUCT WEIGHT	1.5KG
UKCA	YES	OVERALL HEIGHT AS SHOWN	300MM
UL	YES	OVERALL WIDTH AS SHOWN	300MM
DIMMABLE AS STANDARD?	YES		

FOR MORE INFORMATION ABOUT THIS PRODUCT:

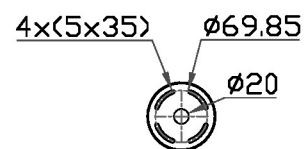
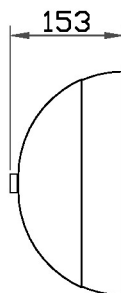
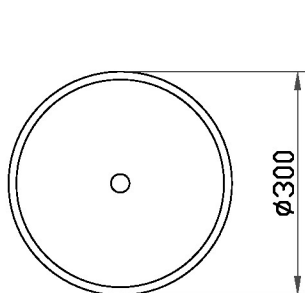
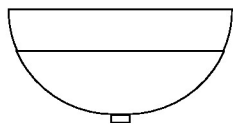
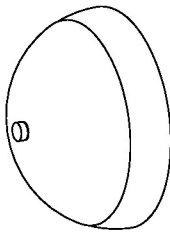
Email: sales@chelsom.co.uk | Call: +44 (0)1253 831400

Chelsom Limited, Heritage House, Clifton Road, Blackpool, Lancashire FY4 4QA, United Kingdom

wordpress-700079-2614039.cloudwaysapps.com

— CHELSOM —

EST. 1947



— CHELSOM —

EST. 1947

FOLLOW THE NUMBERED ASSEMBLY SEQUENCE

