

FEATURES

ADJUSTABLE DOMED HEAD READING LIGHT WITH PUSH SWITCH OPERATION AND USB PORT. INTEGRAL DRIVER INCLUDED.

MATERIAL

STEEL

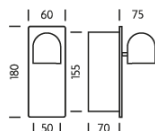
FINISH

SATIN BLACK WITH BRUSHED BRASS (BL/BRB)

CERTIFICATIONS

CE UK CA IP20

DIMENSIONS



FULL TECHNICAL SPECIFICATION

MATERIAL	STEEL	DIMMABLE AS STANDARD?	BY REQUEST ONLY
FINISH	SATIN BLACK WITH BRUSHED BRASS (BL/BRB)	USB	YES
LAMPHOLDER TYPE	INTEGRAL LED	INSULATION RATING	CLASS I
INTEGRAL LIGHT SOURCE	LED 1W 2700K	IP RATING	IP20
COLOUR TEMPERATURE	2700K	PROJECTION	75MM
WATTAGE (W) - INTEGRAL LED	1W	BACKPLATE DIMENSIONS	180 X 60MM
CE	YES	CUTOUT DIMENSIONS	157 X 52MM
UKCA	YES	NET PRODUCT WEIGHT	0.9KG
UL	FOR UL PLEASE ENQUIRE.	OVERALL HEIGHT AS SHOWN	180MM
DRIVER LOCATION	INTEGRAL	OVERALL WIDTH AS SHOWN	60MM
SWITCH TYPE	PUSH		

FOR MORE INFORMATION ABOUT THIS PRODUCT:

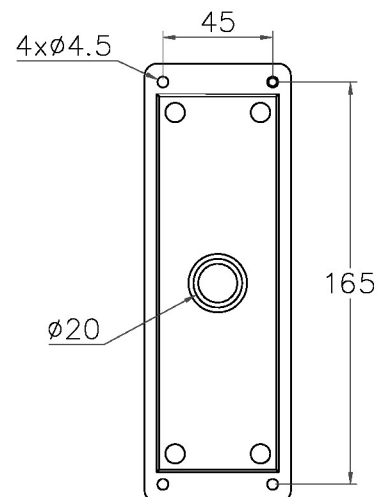
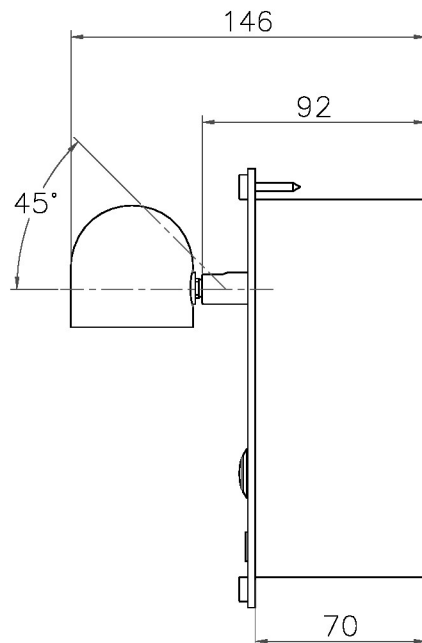
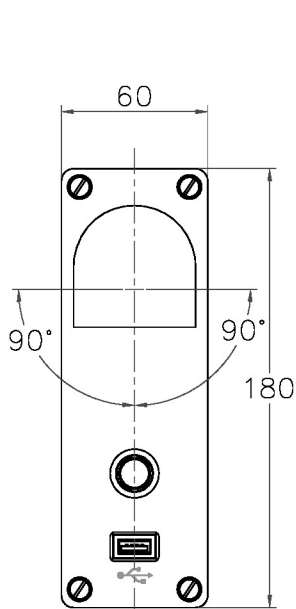
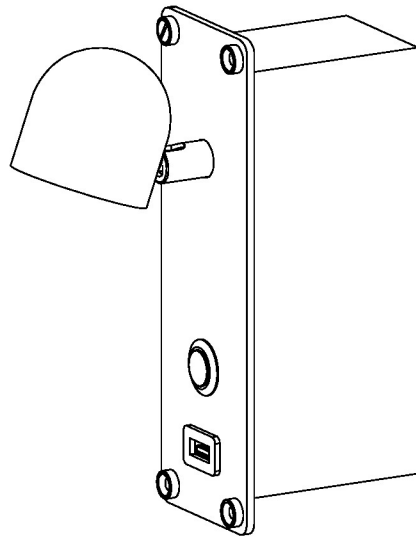
Email: sales@chelsom.co.uk | Call: +44 (0)1253 831400

Chelsom Limited, Heritage House, Clifton Road, Blackpool, Lancashire FY4 4QA, United Kingdom

wordpress-700079-2614039.cloudwaysapps.com

— CHELSOM —

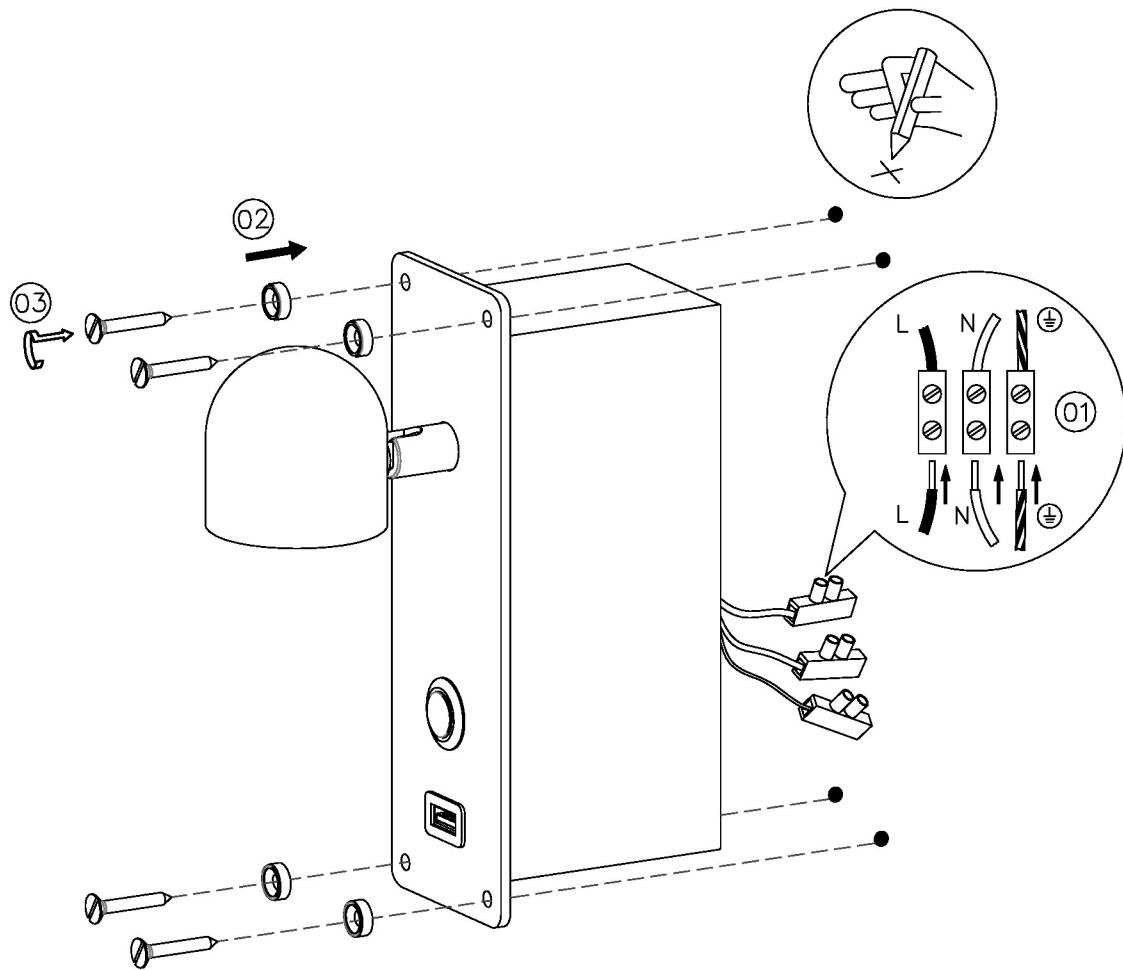
EST. 1947



— CHELSOM —

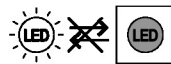
EST. 1947

FOLLOW THE NUMBERED ASSEMBLY SEQUENCE

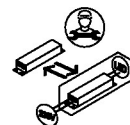


SLR Information

This product contains a light source
of Energy Efficiency Class E
Regulation 2021 No. 1095



Non-replaceable
light source



Control gear
replaceable by
qualified person

www.chelsom.co.uk