



FEATURES

LED DOCK COMBINATION WALL LIGHT - READING LIGHT HAS DOCKING SWITCH OPERATION. LEFT AND RIGHT HANDED AVAILABLE.

MATERIAL

STEEL AND ALUMINIUM

FINISH

SATIN BLACK (BL)

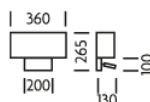
RECOMMENDED LAMP

1 X E27 7W LED 2700K PLUS 1 X LED 1W 2700K

CERTIFICATIONS

CE UK CA IP20

DIMENSIONS



FULL TECHNICAL SPECIFICATION

MATERIAL	STEEL AND ALUMINIUM	DRIVER LOCATION	INTEGRAL
FINISH	SATIN BLACK (BL)	SWITCH TYPE	DOCKING SWITCH
LAMPHOLDER TYPE	E27 AND INTEGRAL LED	DIMMABLE AS STANDARD?	BY REQUEST ONLY
RECOMMENDED LAMP	1 X E27 7W LED 2700K PLUS 1 X LED 1W 2700K	INSULATION RATING	CLASS I
COLOUR TEMPERATURE	2700K	IP RATING	IP20
MAX WATTAGE (RETROFIT)	30W	PROJECTION	130MM
WATTAGE (W) - INTEGRAL LED	1W	BACKPLATE DIMENSIONS	100 X 200MM
CE	YES	NET PRODUCT WEIGHT	1KG
UKCA	YES	OVERALL HEIGHT AS SHOWN	265MM
UL	FOR UL PLEASE ENQUIRE.	OVERALL WIDTH AS SHOWN	360MM

FOR MORE INFORMATION ABOUT THIS PRODUCT:

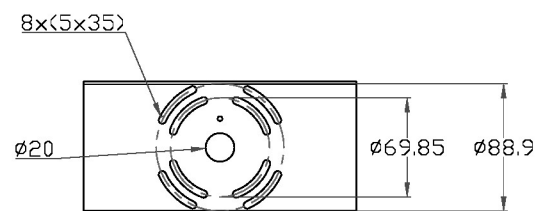
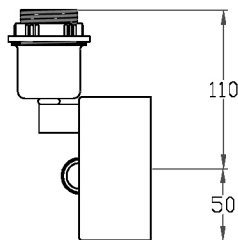
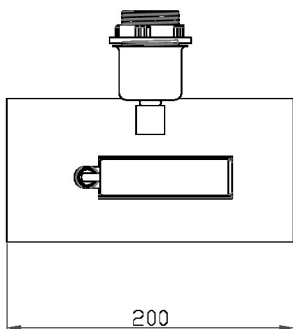
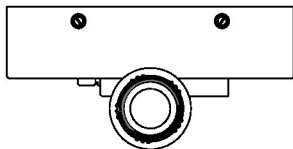
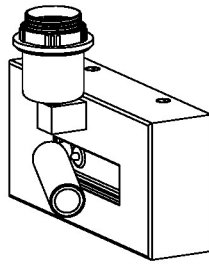
Email: sales@chelsom.co.uk | Call: +44 (0)1253 831400

Chelsom Limited, Heritage House, Clifton Road, Blackpool, Lancashire FY4 4QA, United Kingdom

wordpress-700079-2614039.cloudwaysapps.com

— CHELSOM —

EST. 1947



LED/5/2/W1L

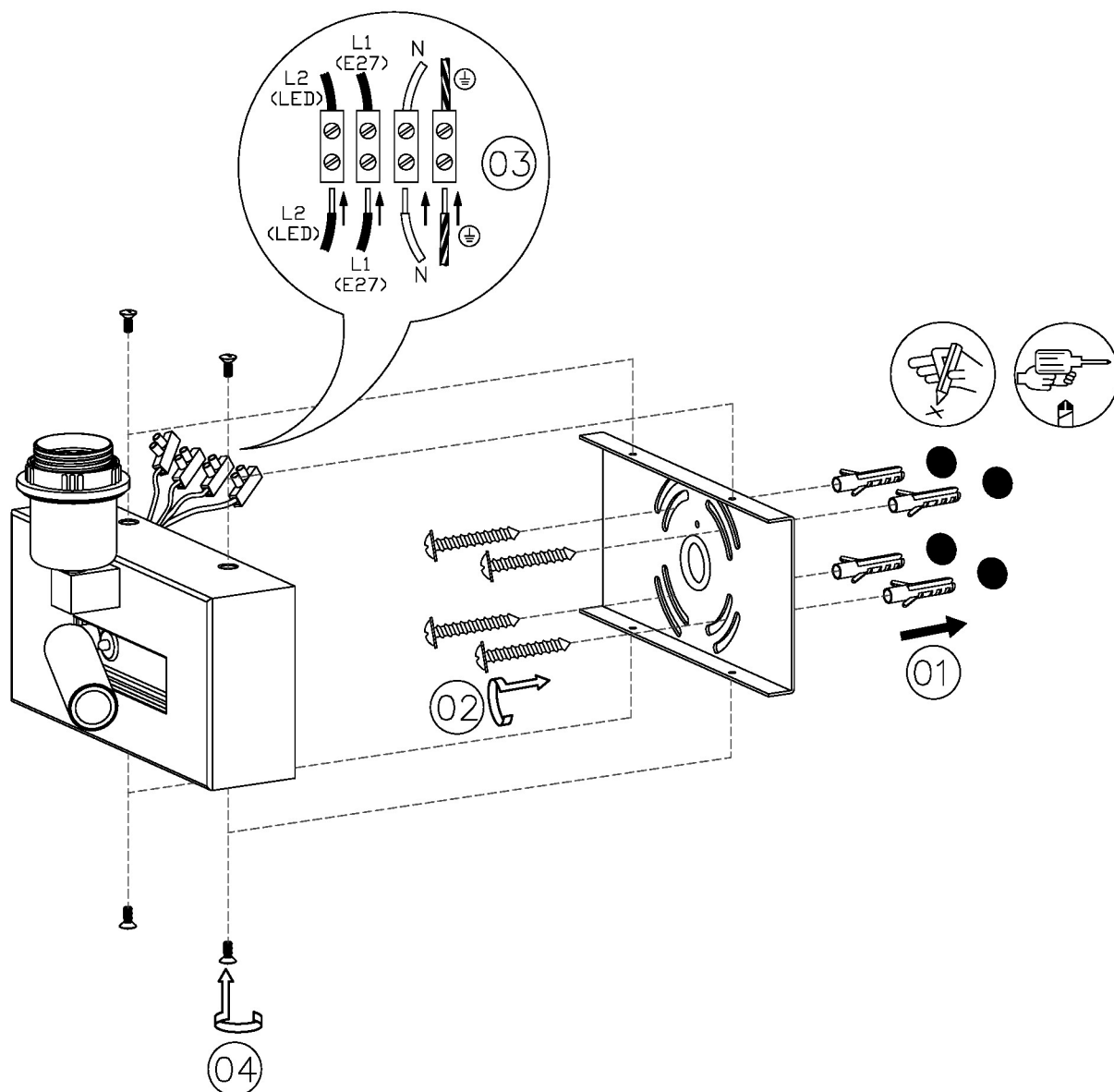
Revision A

www.chelsom.co.uk

— CHELSOM —

EST. 1947

FOLLOW THE NUMBERED ASSEMBLY SEQUENCE

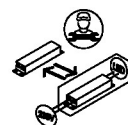


SLR Information

This product contains a light source
of Energy Efficiency Class E
Regulation 2021 No. 1095



Non-replaceable
light source



Control gear
replaceable by
qualified person

www.chelsom.co.uk